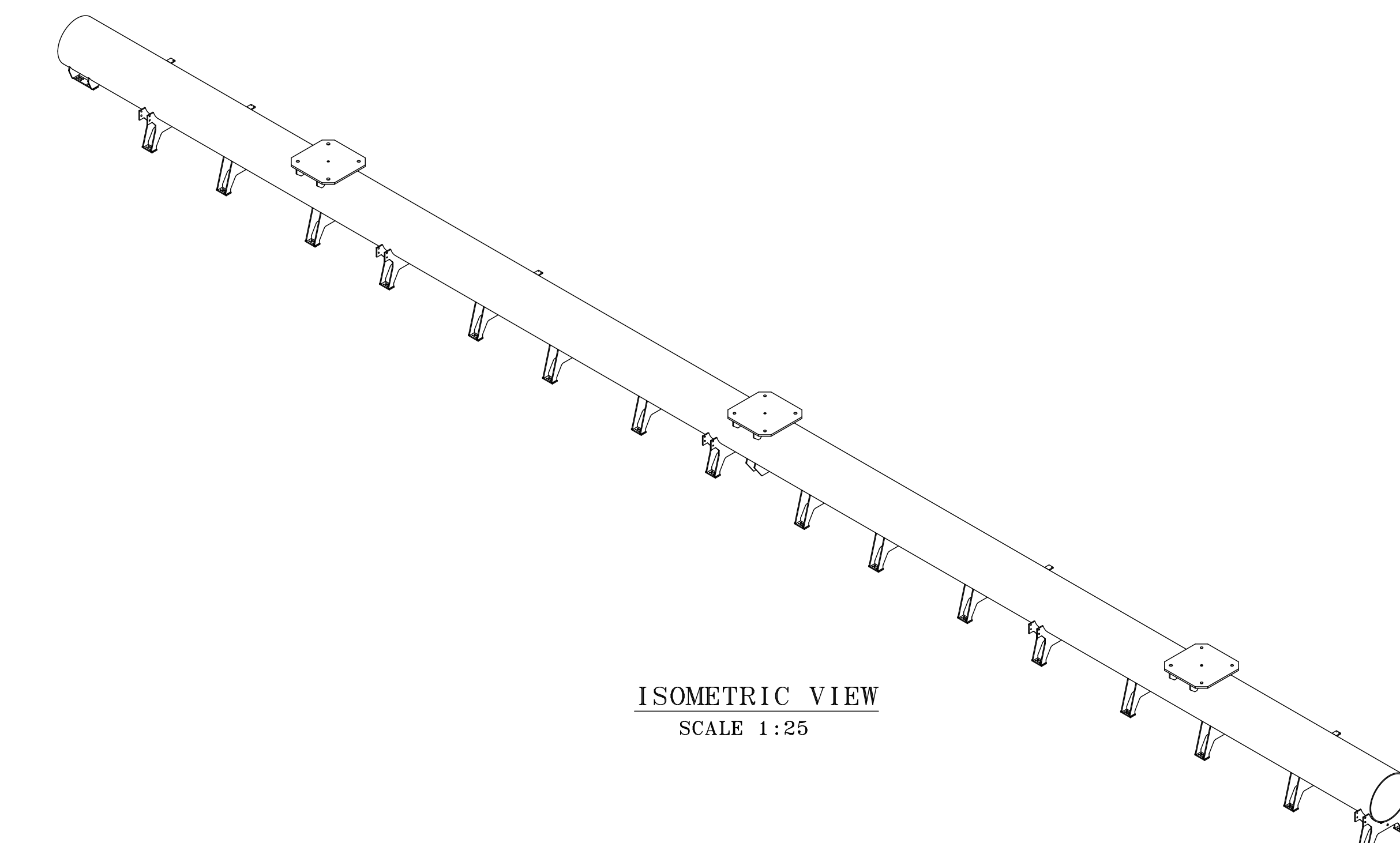
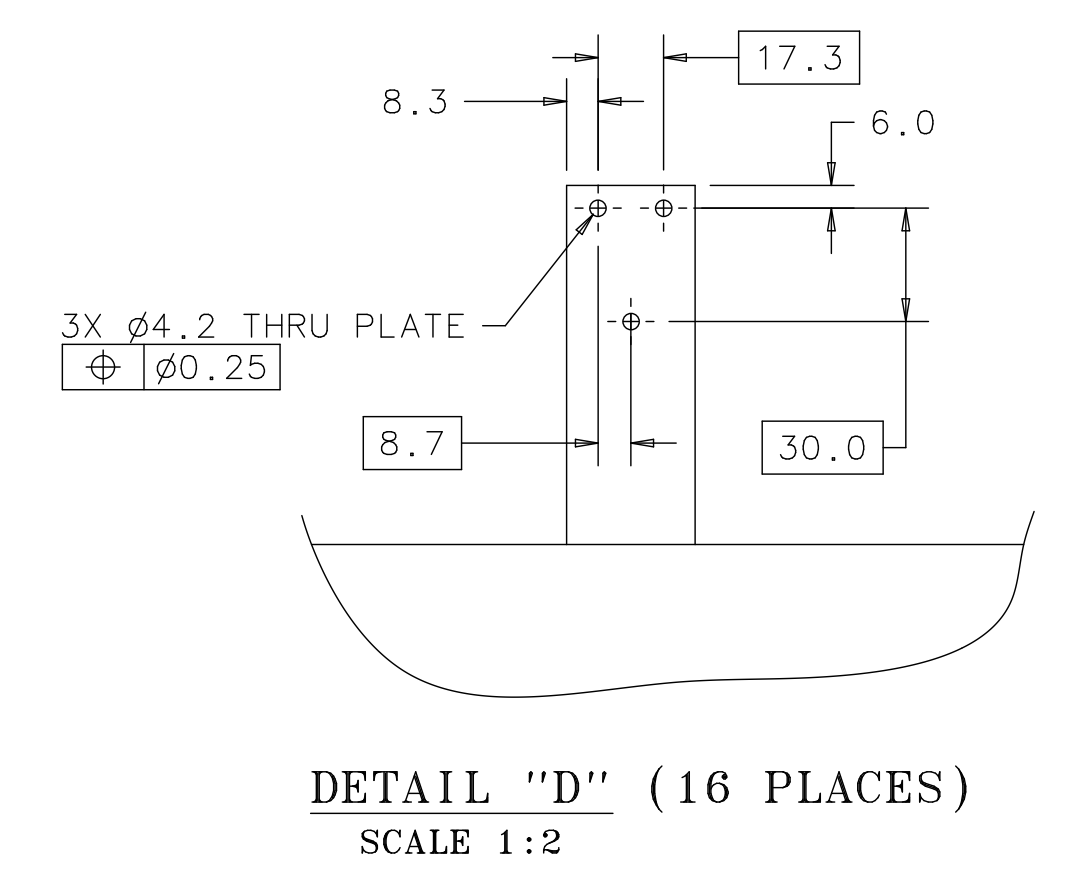
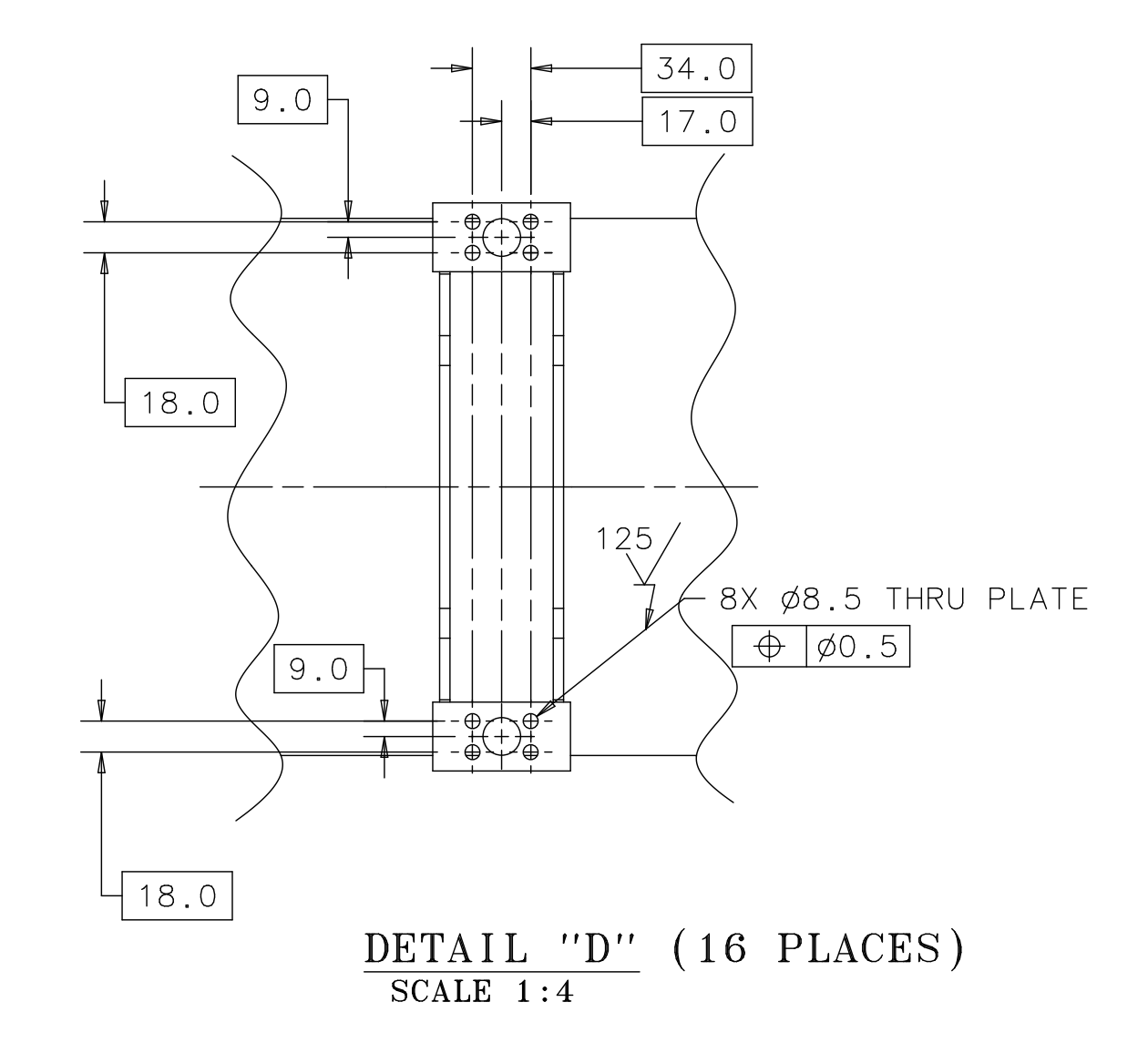
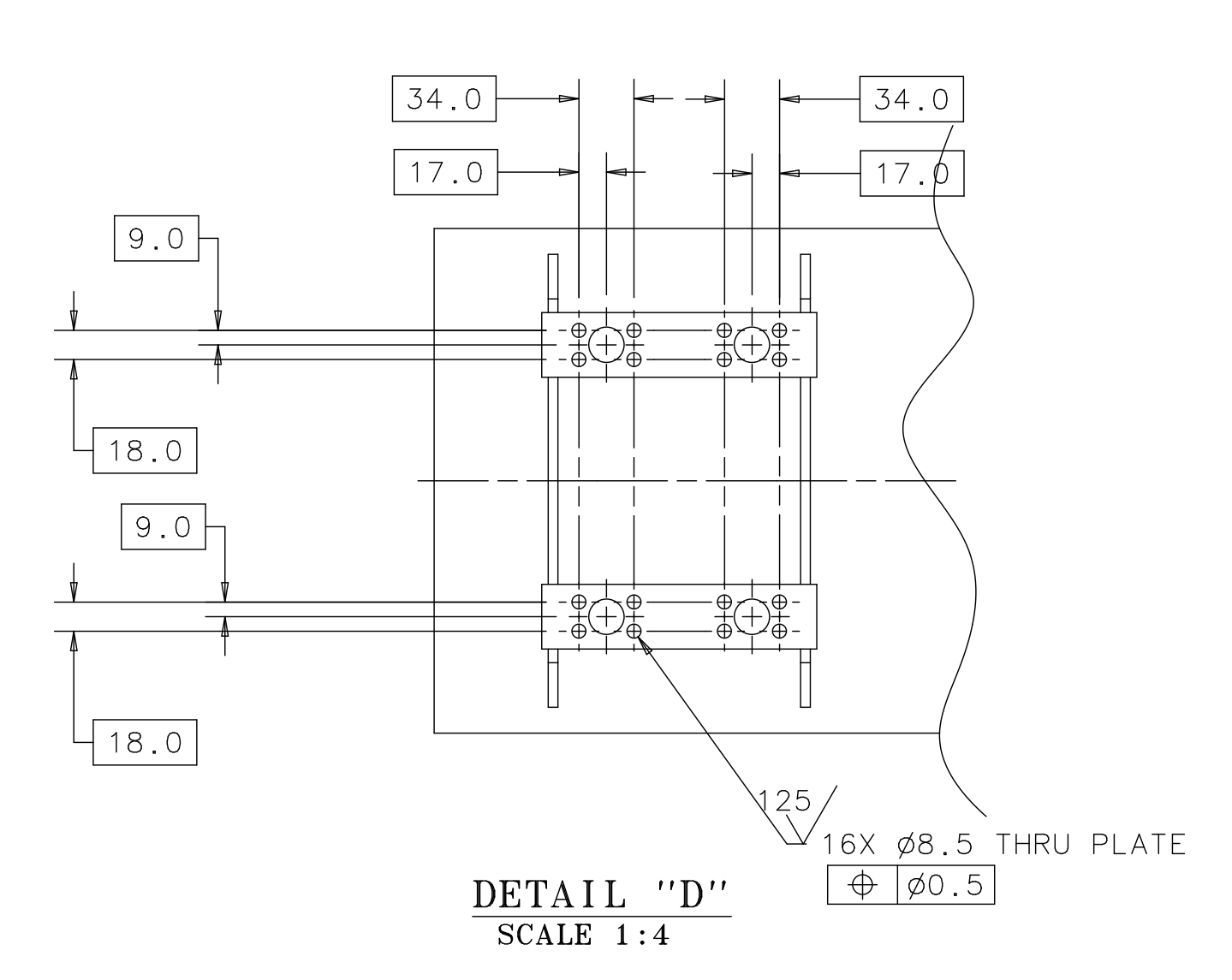
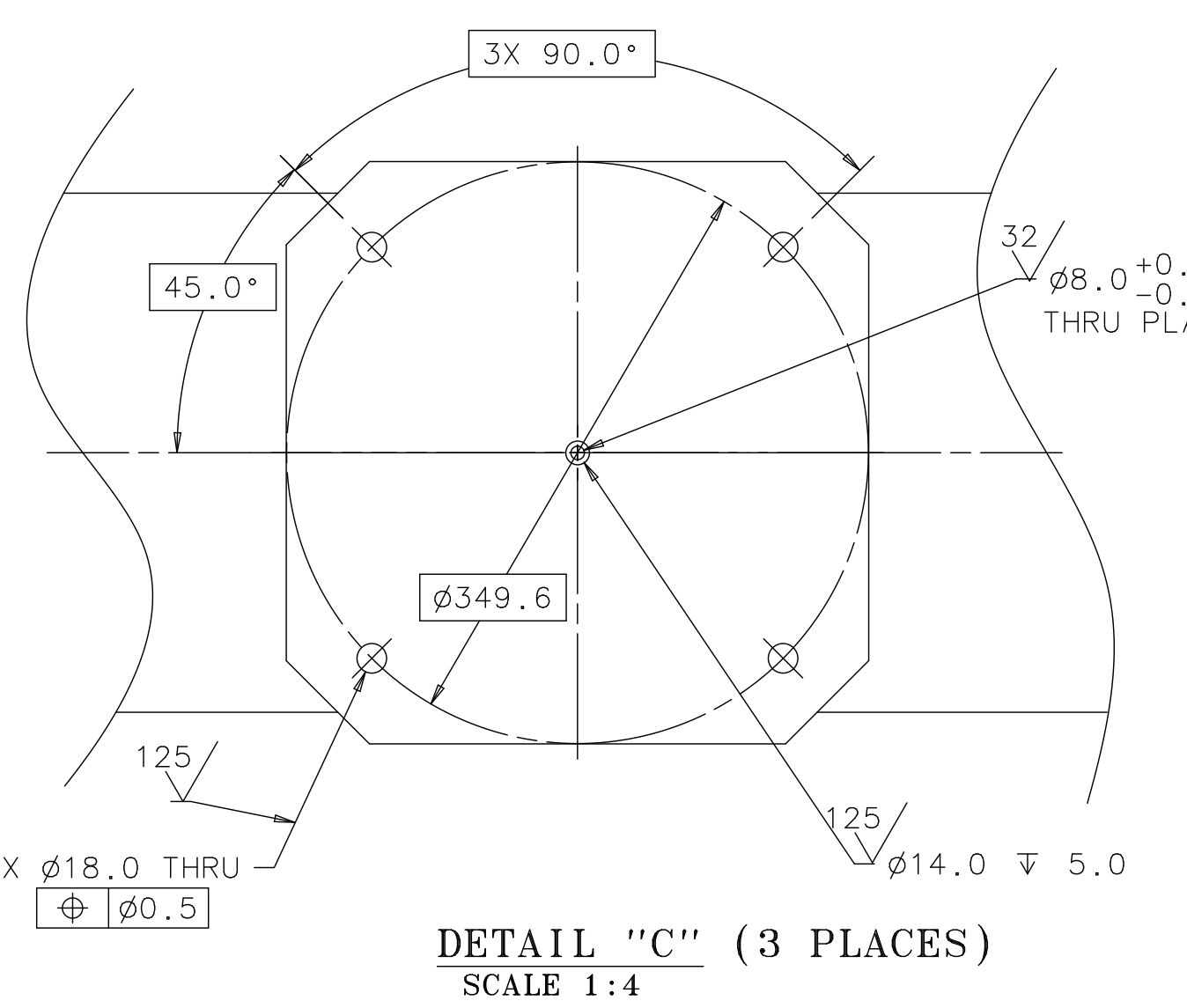
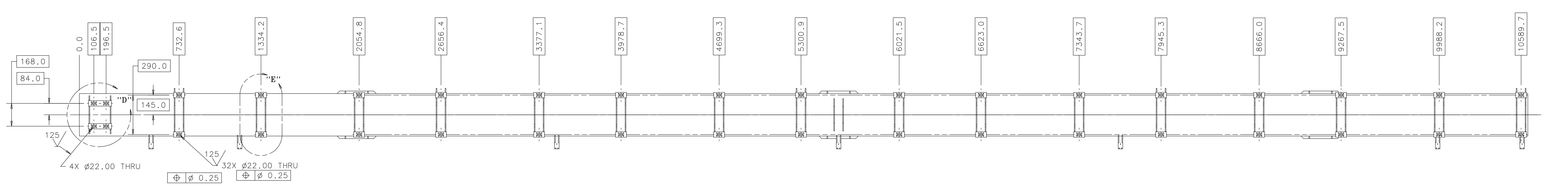
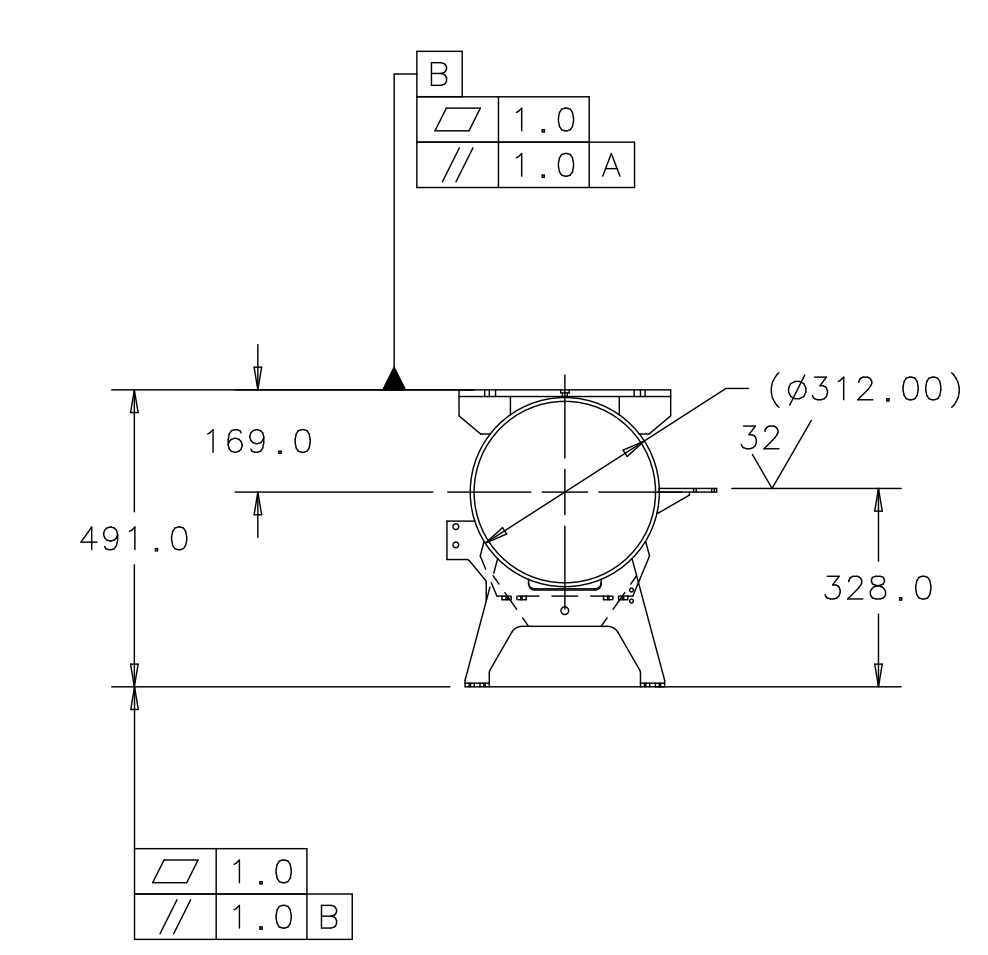
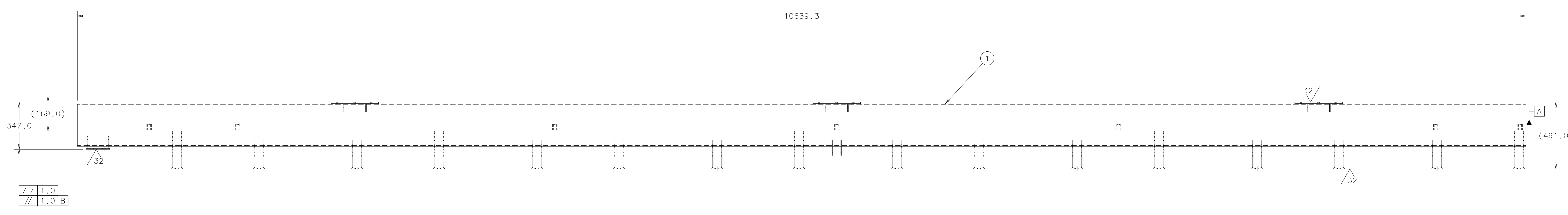
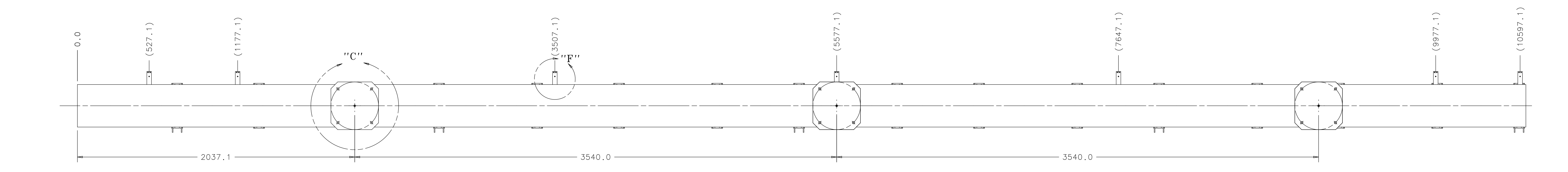


REVISION HISTORY					
ZONE	REV	DESCRIPTION	DATE	CHECKED	APPROVED
A	1	INITIAL RELEASE			



FOR REFERENCE USE ONLY

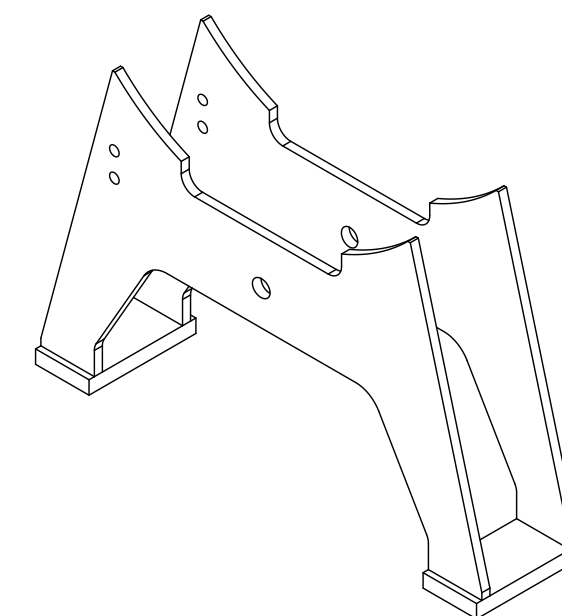
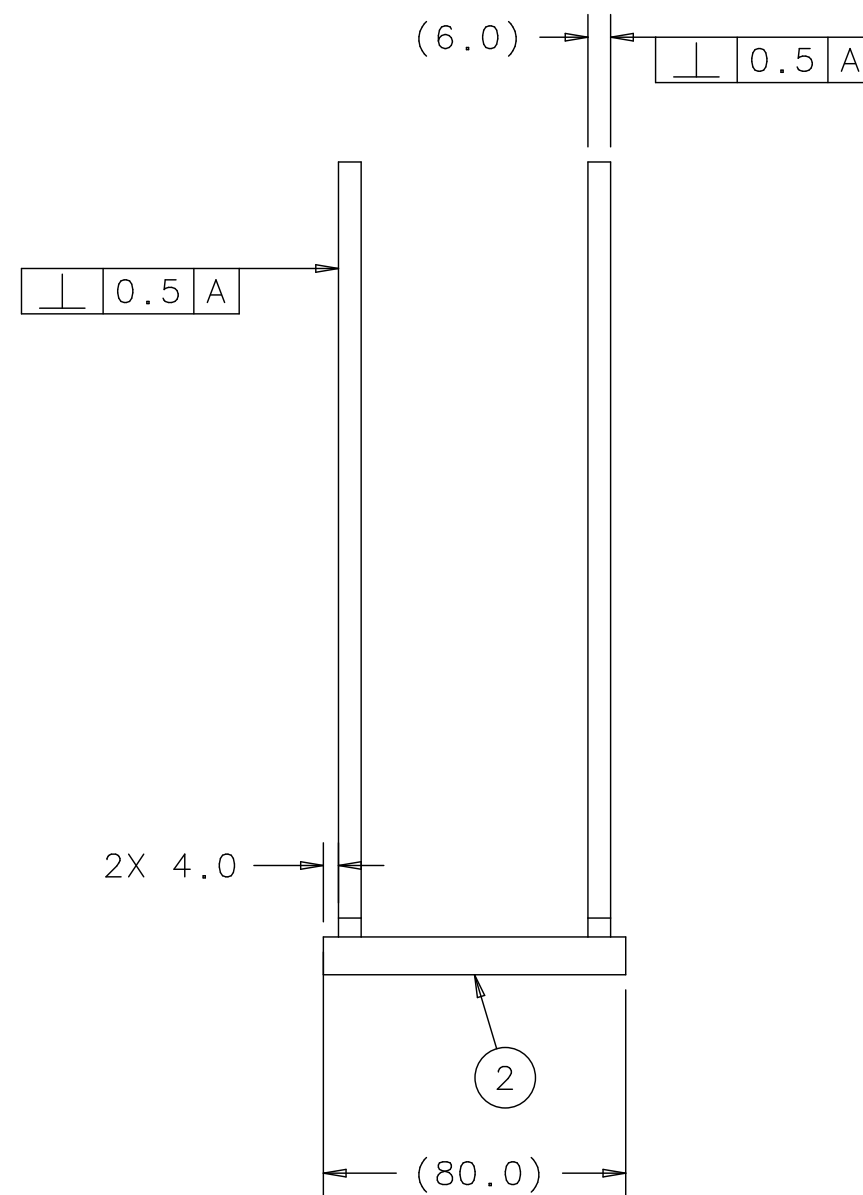
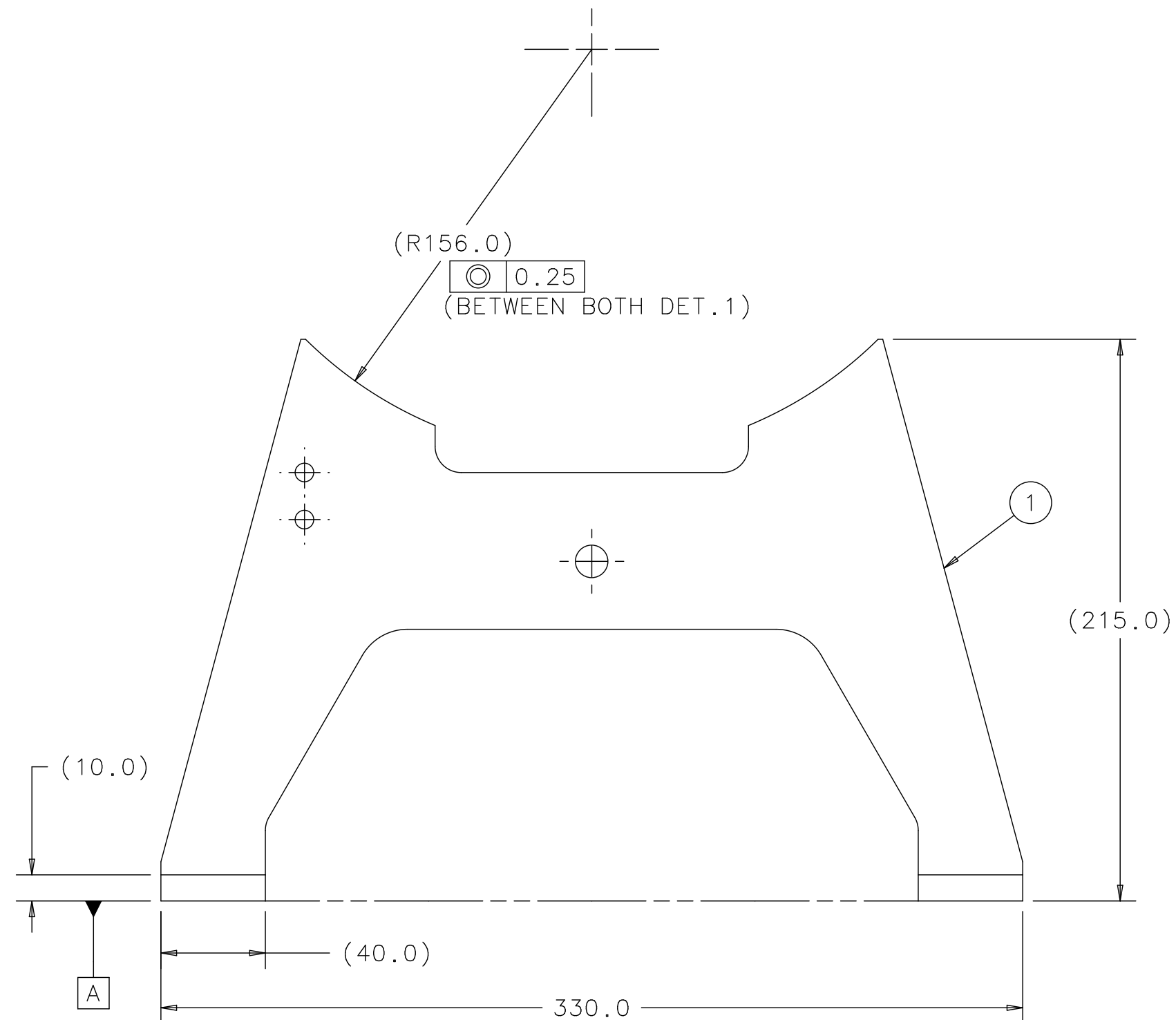
ITEM	P. I. N.	DESCRIPTION	QTY
1	A0-782521	HGR PIPE-NO MAG WELDMENT	1

FINISH	N/A	UNLESS OTHERWISE SPECIFIED: DIMENSIONS ARE IN MILLIMETERS INTERPRET DIM PER ASME Y14.5M-1994 BREAK ALL SHARP EDGES .75 MAX. ALL MACH SURFACES 3.2 MAX.	DRAWN BY Y. ORLOV	DATE 16/JAN/07
MATERIAL	N/A	TOLERANCES	ENGINEERED BY DESY EDMS	DATE
		X + 2 Y + 0.8 Z + 0.15 ANGLE #	TEAM/GROUP	
		THIRD ANGLE PROJECTION	CAD I-DEAS	SOLID MODEL NO. N/A

FERMI NATIONAL ACCELERATOR LABORATORY UNITED STATES DEPARTMENT OF ENERGY P.O. BOX 500, BATAVIA, IL 60510-0500	
ILC TYPE 4 CRYOMODULE HGR PIPE-NO MAG, MACHINING HGR PIPE MACHINED-NO-MAG	
SIZE A0	REV A
CAGE CODE 0U5R6	DWG NO. D00000000782551
SCALE 1:12.5	DO NOT SCALE DRAWING
SHEET 1	OF 1

NEXT ASSY	USED ON
APPLICATION	

REVISION HISTORY				
CAD MAINTAINED. CHANGES SHALL BE INCORPORATED BY THE DESIGN ACTIVITY.				
ZONE	REV	DESCRIPTION	DATE	APPROVED
	A	INITIAL RELEASE		



ISOMETRIC VIEW
SCALE 1:4

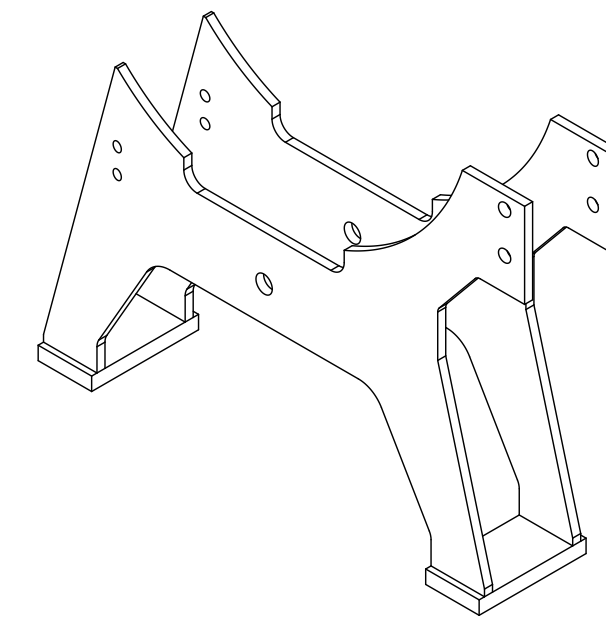
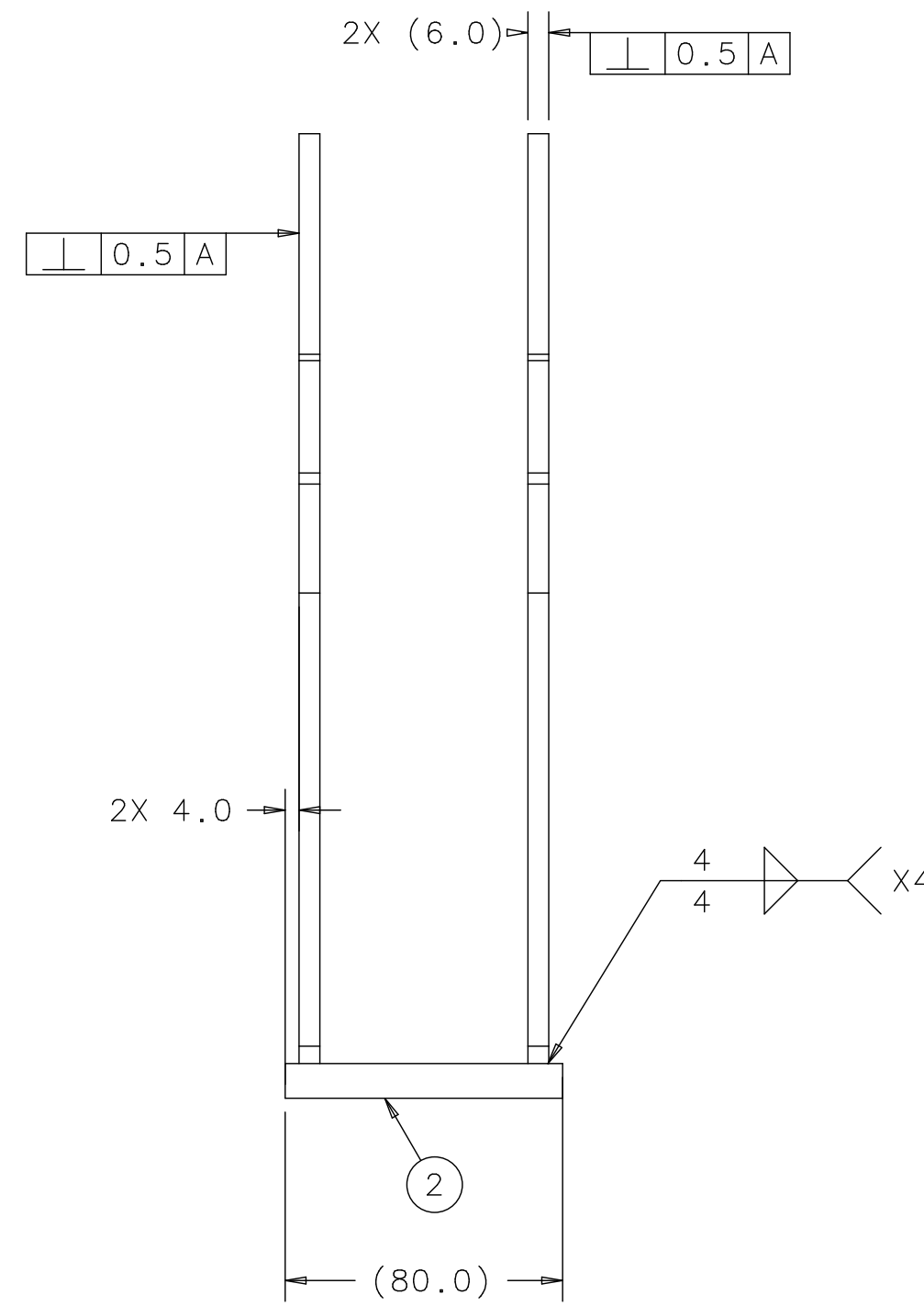
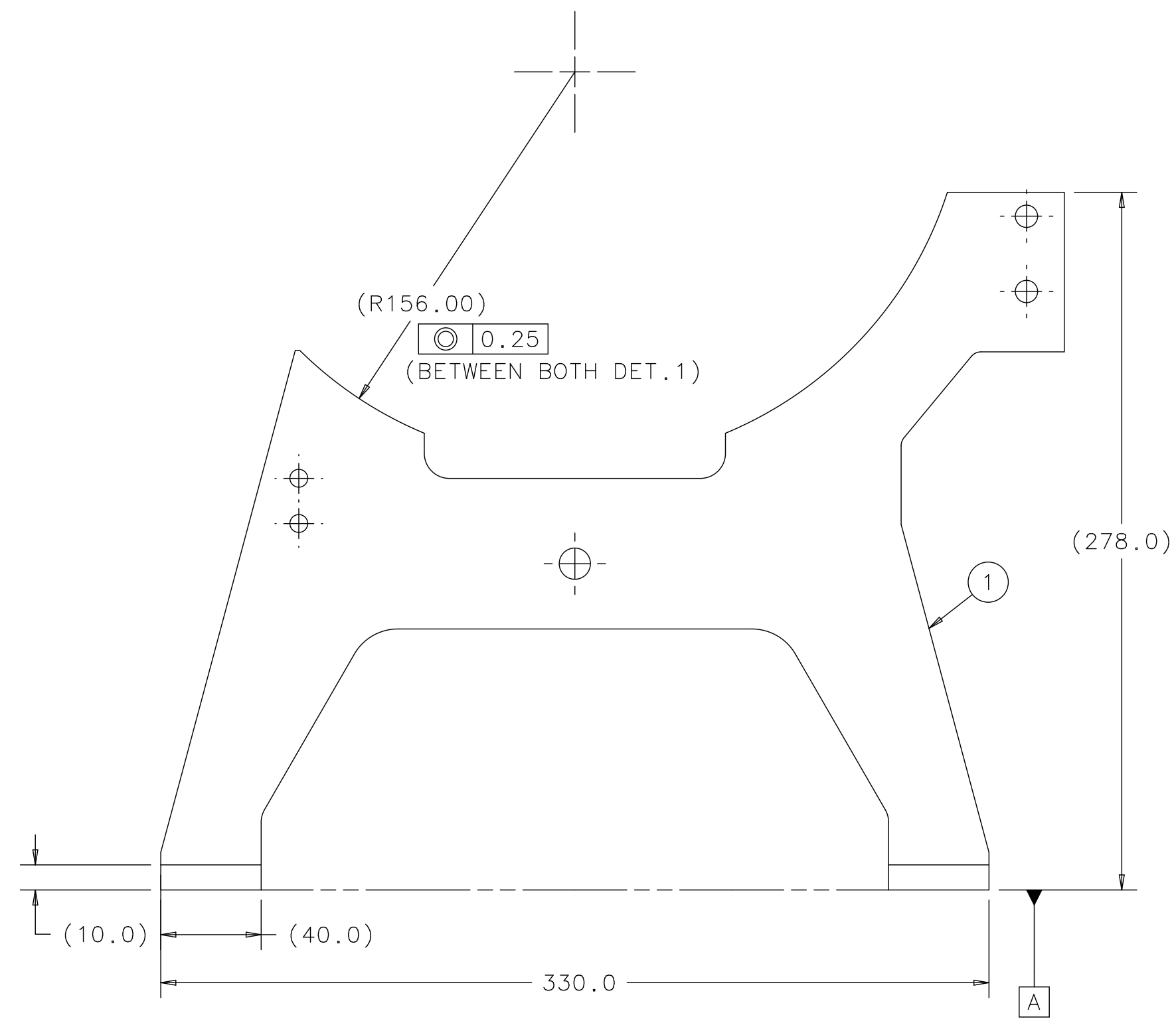
ITEM	P. I. N.	DESCRIPTION	QTY
2	COM'L		2
1		RF HANGER PLATE-B	2

PARTS LIST

FINISH	N/A	UNLESS OTHERWISE SPECIFIED: DIMENSIONS ARE IN MILLIMETERS INTERPRET DIM PER ASME Y14.5M-1994 BREAK ALL SHARP EDGES .75 MAX. ALL MACH. SURFACES 3.2 MAX.	DRAWN BY	DATE	FERMI NATIONAL ACCELERATOR LABORATORY UNITED STATES DEPARTMENT OF ENERGY P.O. BOX 500, BATAVIA, IL 60510-0500			
			Y.ORLOV	17JAN07				
MATERIAL	N/A	TOLERANCES	CHECKED BY	DATE				
		X ± 2 .X ± 0.8 .XX ± 0.13 ANGLE ± 1°						
		THIRD ANGLE PROJECTION	ENGINEERED BY	DATE	TITLE			
					ILC, TYPE IV CRYMOBULE RF CAVITY HENGER-B WLDMT RF_CAV_HANGER_WELDMNT_B			
			DATABASE	TEAM/GROUP	SIZE	CAGE CODE	DWG NO.	REV
			DESY EDMS		A2	OU5R6	D0000000782691	A
			CAD	SOLID MODEL NO.	SCALE	DO NOT SCALE DWG	SHEET 1 OF 1	
			I-DEAS	N/A	1:2			

APPLICATION	USED ON
NEXT ASSY	-

REVISION HISTORY				
CAD MAINTAINED. CHANGES SHALL BE INCORPORATED BY THE DESIGN ACTIVITY.				
ZONE	REV	DESCRIPTION	DATE	APPROVED
	A	INITIAL RELEASE		



ISOMETRIC VIEW
SCALE 1:4

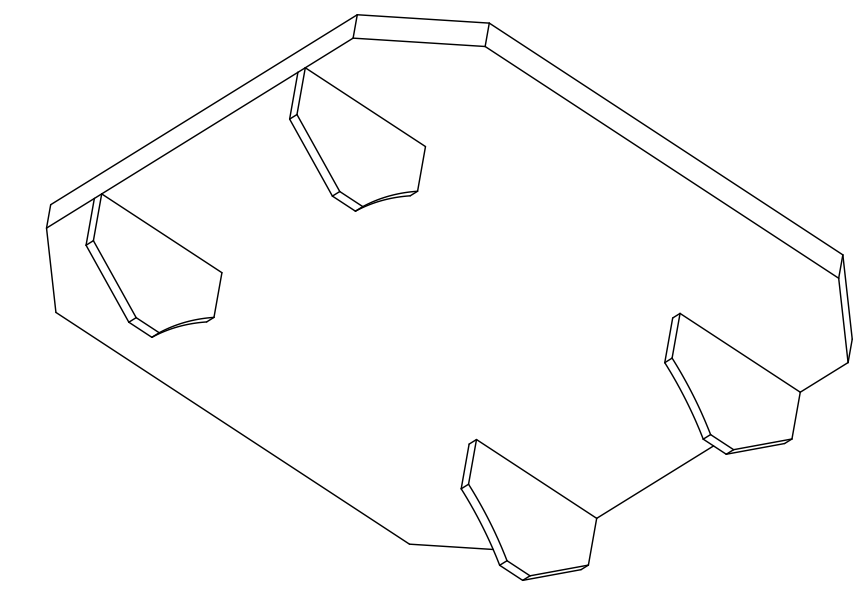
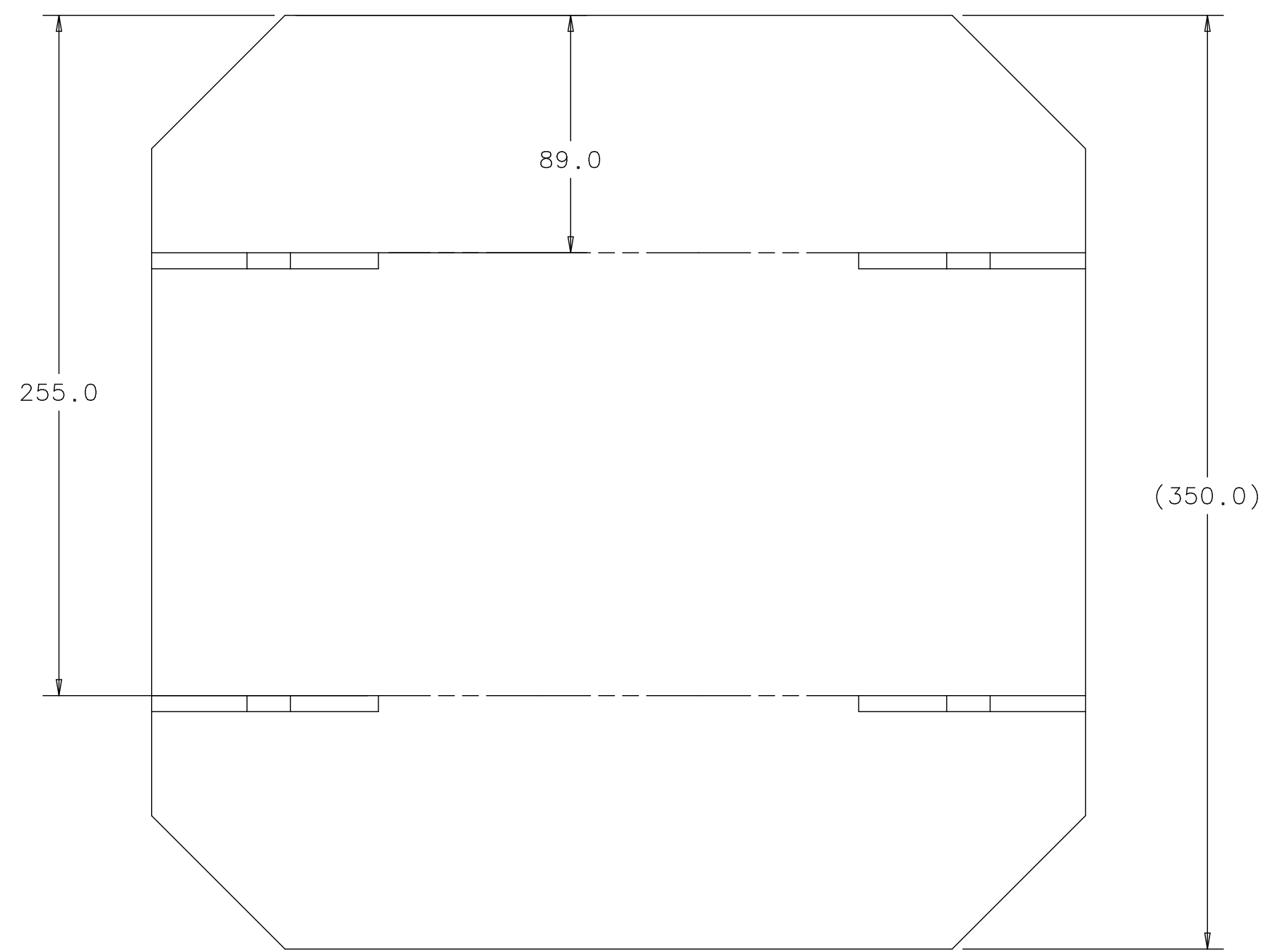
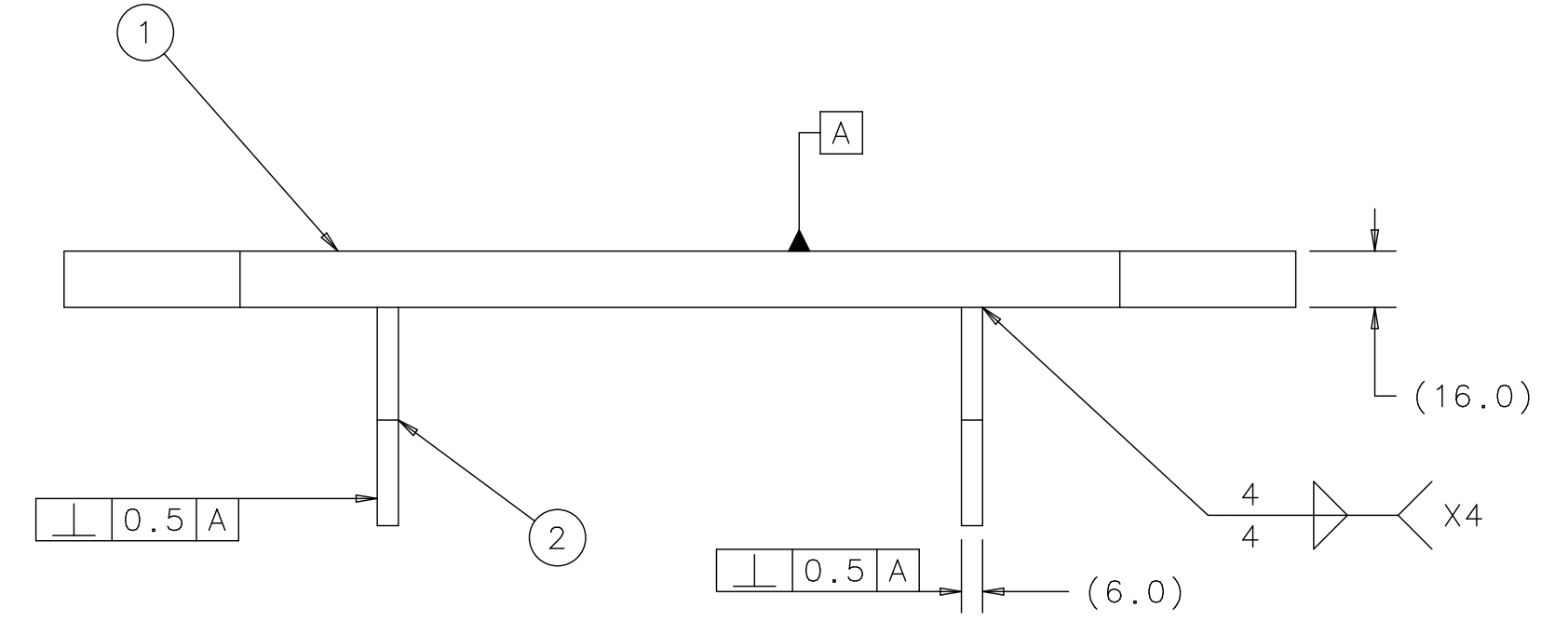
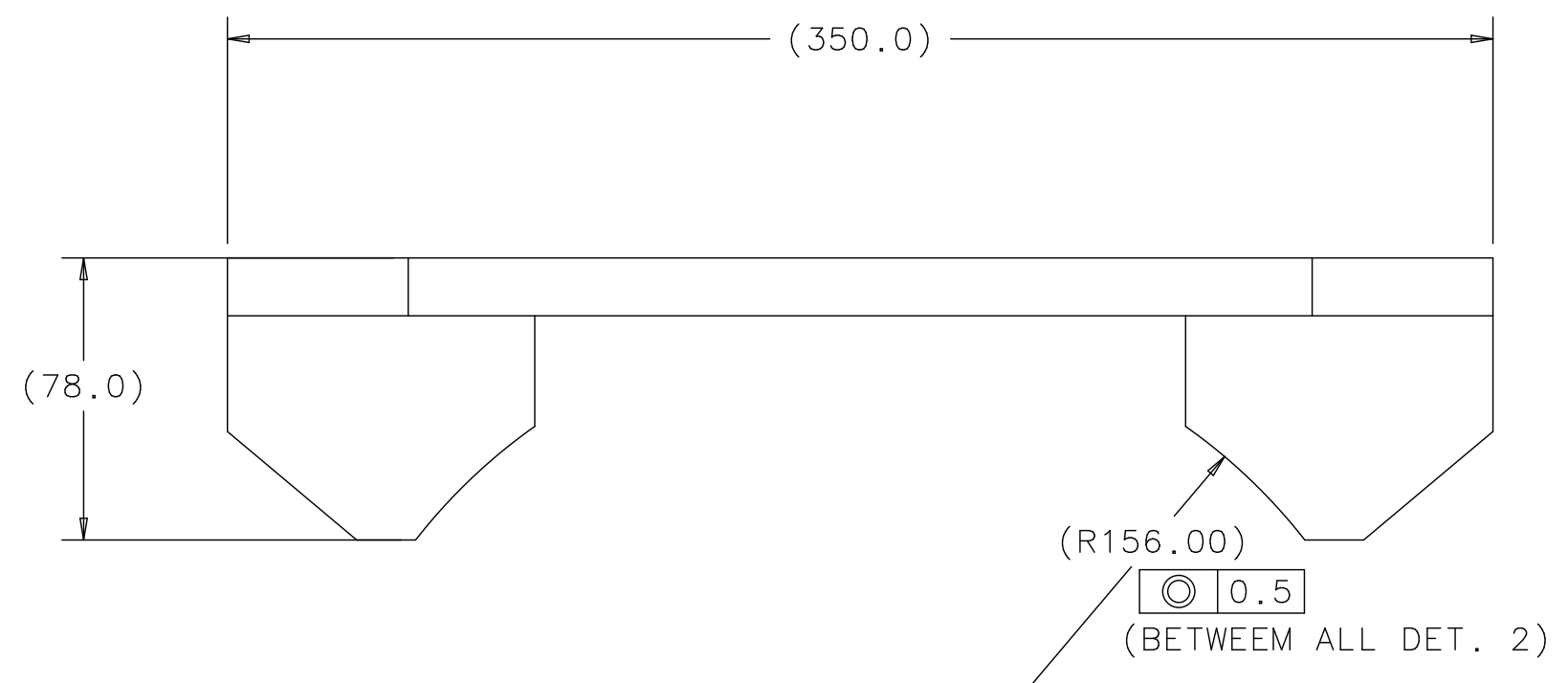
ITEM	P. I. N.	DESCRIPTION	QTY
2	COM'L		2
1		RF HANGER PLATE-A	2

PARTS LIST

FINISH	N/A	UNLESS OTHERWISE SPECIFIED: DIMENSIONS ARE IN MILLIMETERS INTERPRET DIM PER ASME Y14.5M-1994 BREAK ALL SHARP EDGES .75 MAX. ALL MACH. SURFACES 3.2 MAX.	DRAWN BY	DATE	FERMI NATIONAL ACCELERATOR LABORATORY UNITED STATES DEPARTMENT OF ENERGY P.O. BOX 500, BATAVIA, IL 60510-0500
			Y.ORLOV	17JAN07	
MATERIAL	N/A	TOLERANCES	CHECKED BY	DATE	TITLE
					ILC, TYPE IV CRYMODULE RF CAVITY HANGER-A WLDMT RF_CAV_HANGER_WELDMENT_A
		THIRD ANGLE PROJECTION	ENGINEERED BY	DATE	SIZE
		$X \pm 2$ $.X \pm 0.8$ $.XX \pm 0.13$ ANGLE $\pm 1^\circ$		DATABASE DESY EDMS	CAGE CODE OU5R6
				TEAM/GROUP SOLID MODEL NO. N/A	DWG NO. D0000000782681
					REV A
					SCALE 1:2 DO NOT SCALE DWG SHEET 1 OF 1

APPL.	DATE	BY	REASON

REVISION HISTORY				
CAD MAINTAINED. CHANGES SHALL BE INCORPORATED BY THE DESIGN ACTIVITY.				
ZONE	REV	DESCRIPTION	DATE	APPROVED
	A	INITIAL RELEASE		



ISOMETRIC VIEW
SCALE 1:4

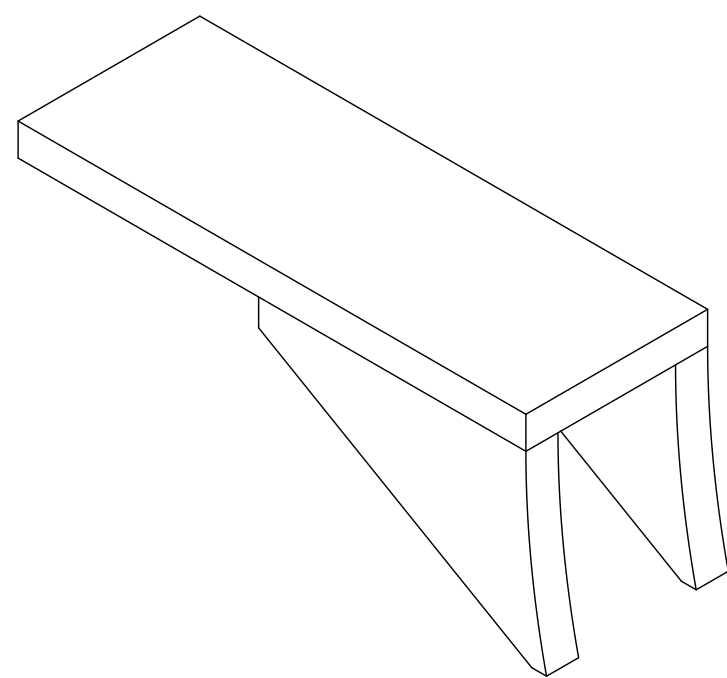
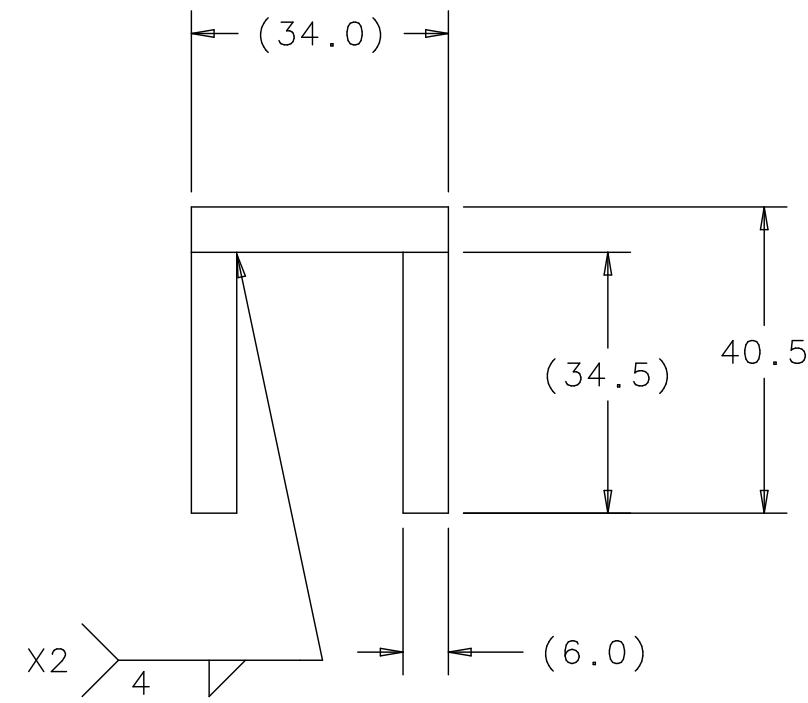
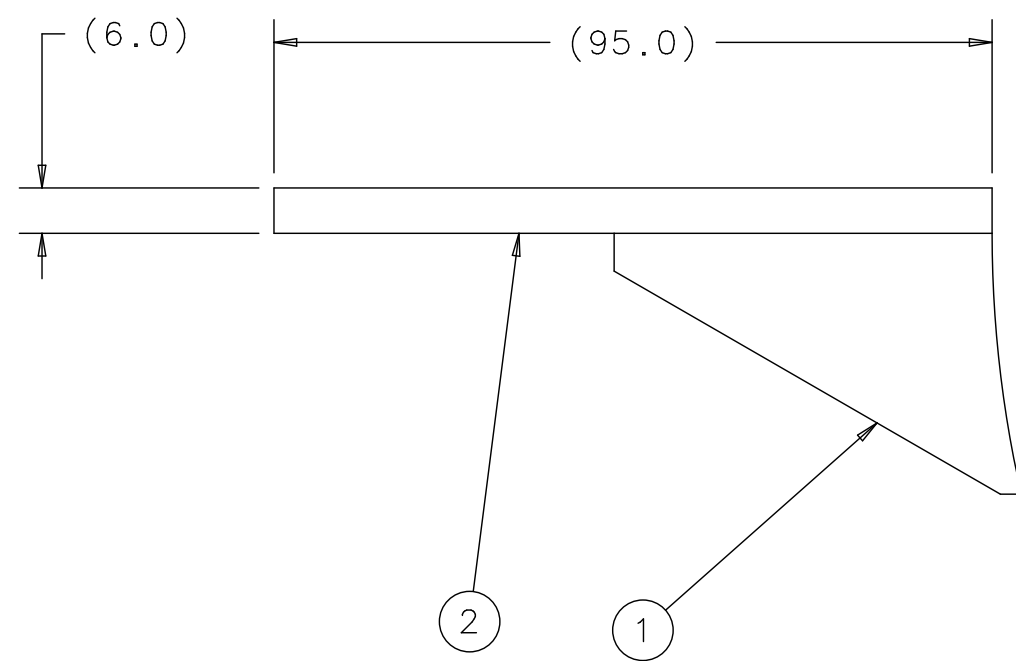
ITEM	P.I.N.	DESCRIPTION	QTY
2	A2-739001	HGR PIPE HENGER SPRT PLATE	4
1	A1-739011	HGR PIPE HENGER BASE PLATE	1

PARTS LIST

FINISH	N/A	UNLESS OTHERWISE SPECIFIED: DIMENSIONS ARE IN MILLIMETERS INTERPRET DIM PER ASME Y14.5M-1994 BREAK ALL SHARP EDGES .75 MAX. ALL MACH. SURFACES 3.2 MAX.	DRAWN BY	Y. ORLOV	DATE	17JAN07	FERMI NATIONAL ACCELERATOR LABORATORY UNITED STATES DEPARTMENT OF ENERGY P.O. BOX 500, BATAVIA, IL 60510-0500	
	MATERIAL		N/A	CHECKED BY		DATE		
			ENGINEERED BY		DATE		SIZE	A2
		TOLERANCES	X ± 2 .X ± 0.8 .XX ± 0.13 ANGLE ± 1°	THIRD ANGLE PROJECTION	DATABASE	DESY EDMS	CAGE CODE	OU5R6
					CAD	I-DEAS	DWG NO.	D0000000782671
					TEAM/GROUP		REV	A
					SOLID MODEL NO.	N/A	SCALE	1:2
							DO NOT SCALE DWG	SHEET 1 OF 1

APPLICATION	USED ON
-	-
NEXT ASSY	

REVISION HISTORY				
CAD MAINTAINED. CHANGES SHALL BE INCORPORATED BY THE DESIGN ACTIVITY.				
ZONE	REV	DESCRIPTION	DATE	APPROVED
	A	INITIAL RELEASE		



ISOMETRIC VIEW

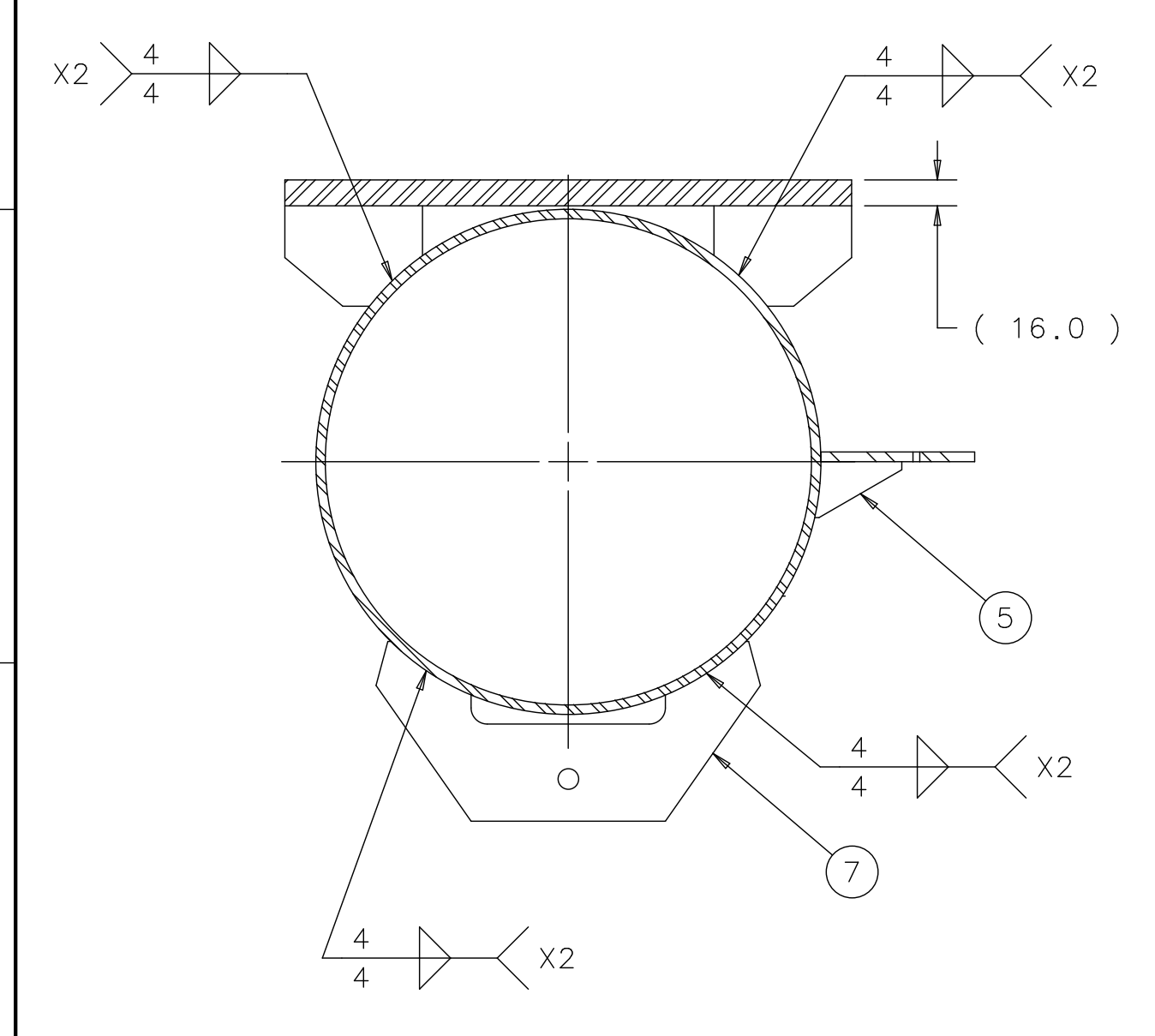
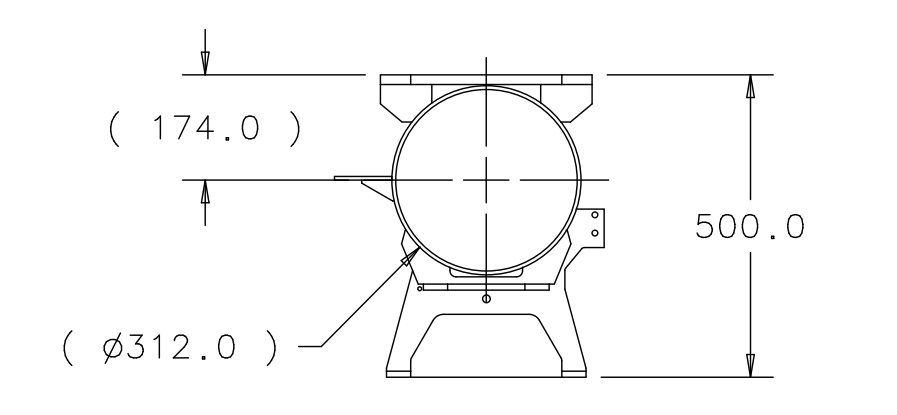
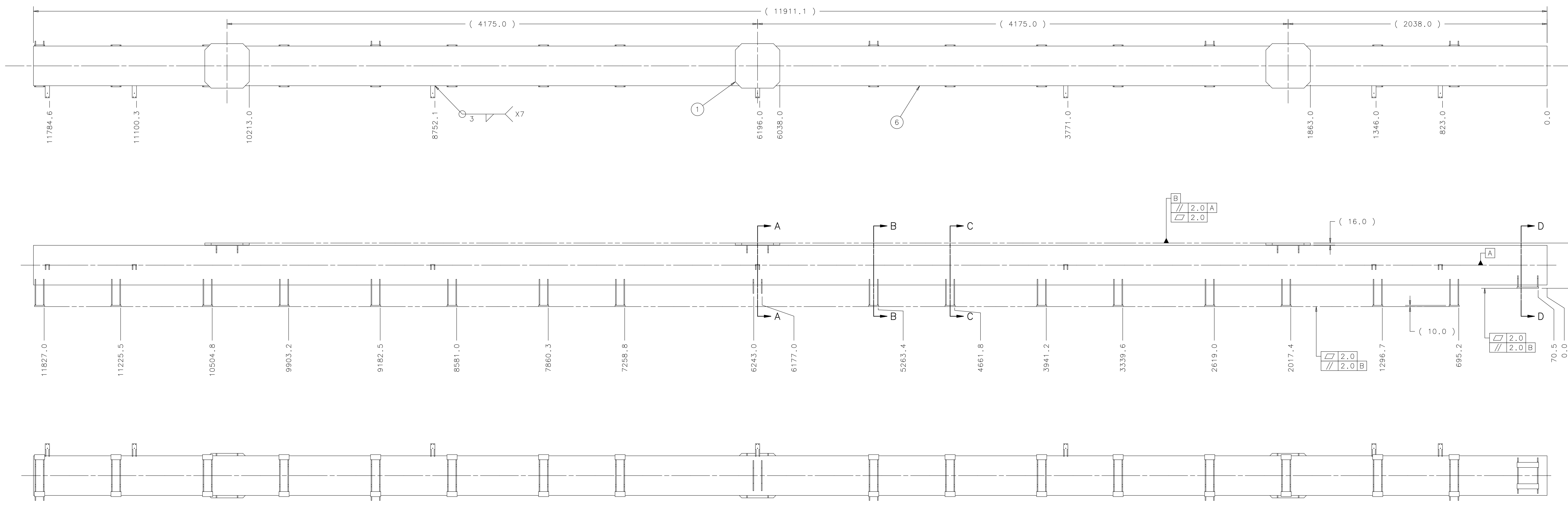
ITEM	P. I. N.	DESCRIPTION	QTY
2	COM'L		1
1	A3-738961	WRM PLATE	2

PARTS LIST

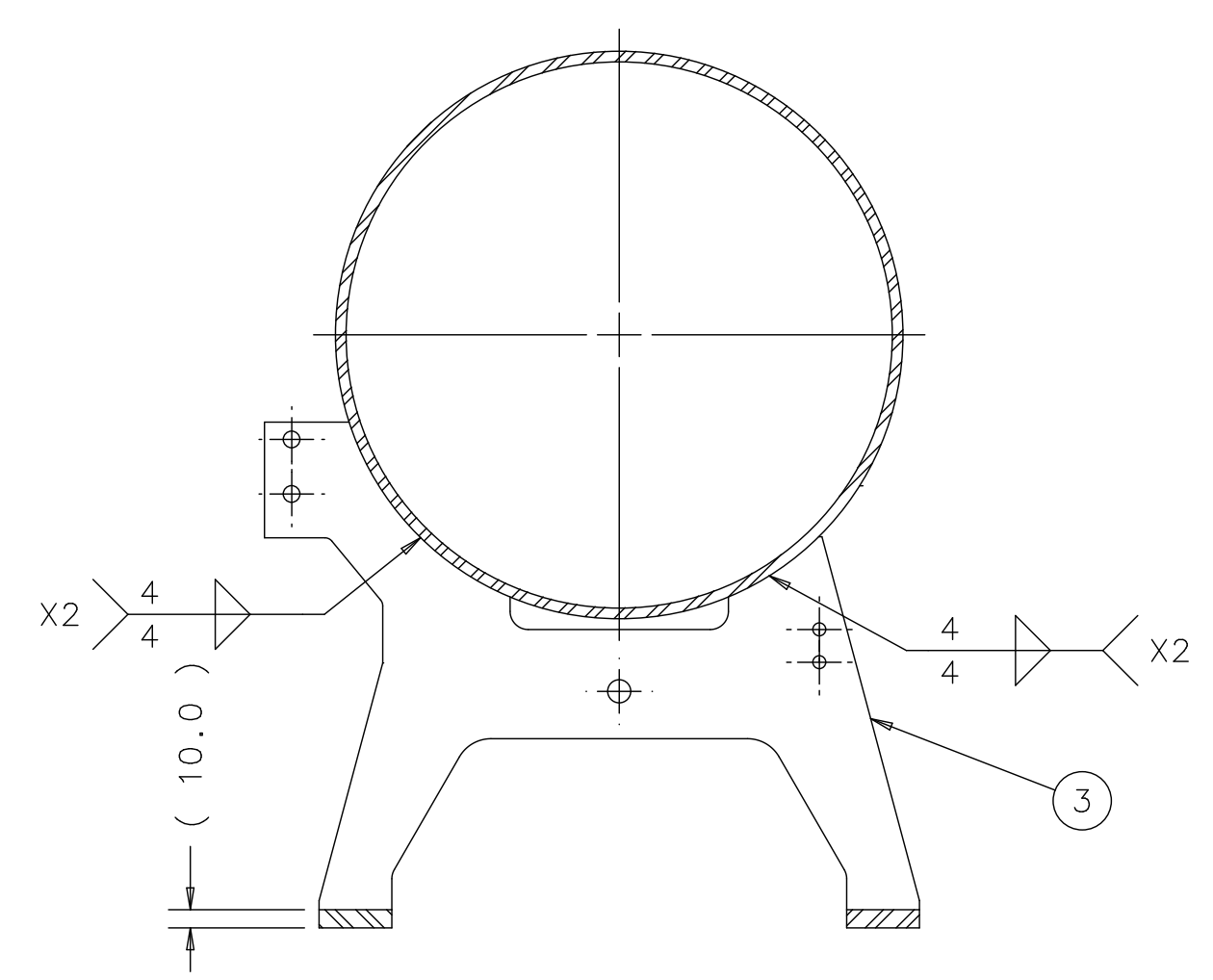
FINISH	N/A	UNLESS OTHERWISE SPECIFIED: DIMENSIONS ARE IN MILLIMETERS INTERPRET DIM PER ASME Y14.5M-1994 BREAK ALL SHARP EDGES .75 MAX. ALL MACH. SURFACES 3.2 MAX.	DRAWN BY	DATE	FERMI NATIONAL ACCELERATOR LABORATORY UNITED STATES DEPARTMENT OF ENERGY P.O. BOX 500, BATAVIA, IL 60510-0500
			Y.ORLOV	17JAN07	
CHECKED BY	DATE	TITLE			
ENGINEERED BY	DATE	ILC, TYPE IV CRIOMODULE WRM BRACKET_WLDMT WPM-BRACKET_WLDMT			
MATERIAL	N/A	TOLERANCES	THIRD ANGLE PROJECTION	DATABASE	TEAM/GROUP
		X ± 2 .X ± 0.8 .XX ± 0.13 ANGLE ± 1°		DESY EDMS	
				CAD	SOLID MODEL NO.
				I-DEAS	N/A
					SCALE
					1:1
					DO NOT SCALE DWG
					SHEET 1 OF 1

APPL	DATE	BY

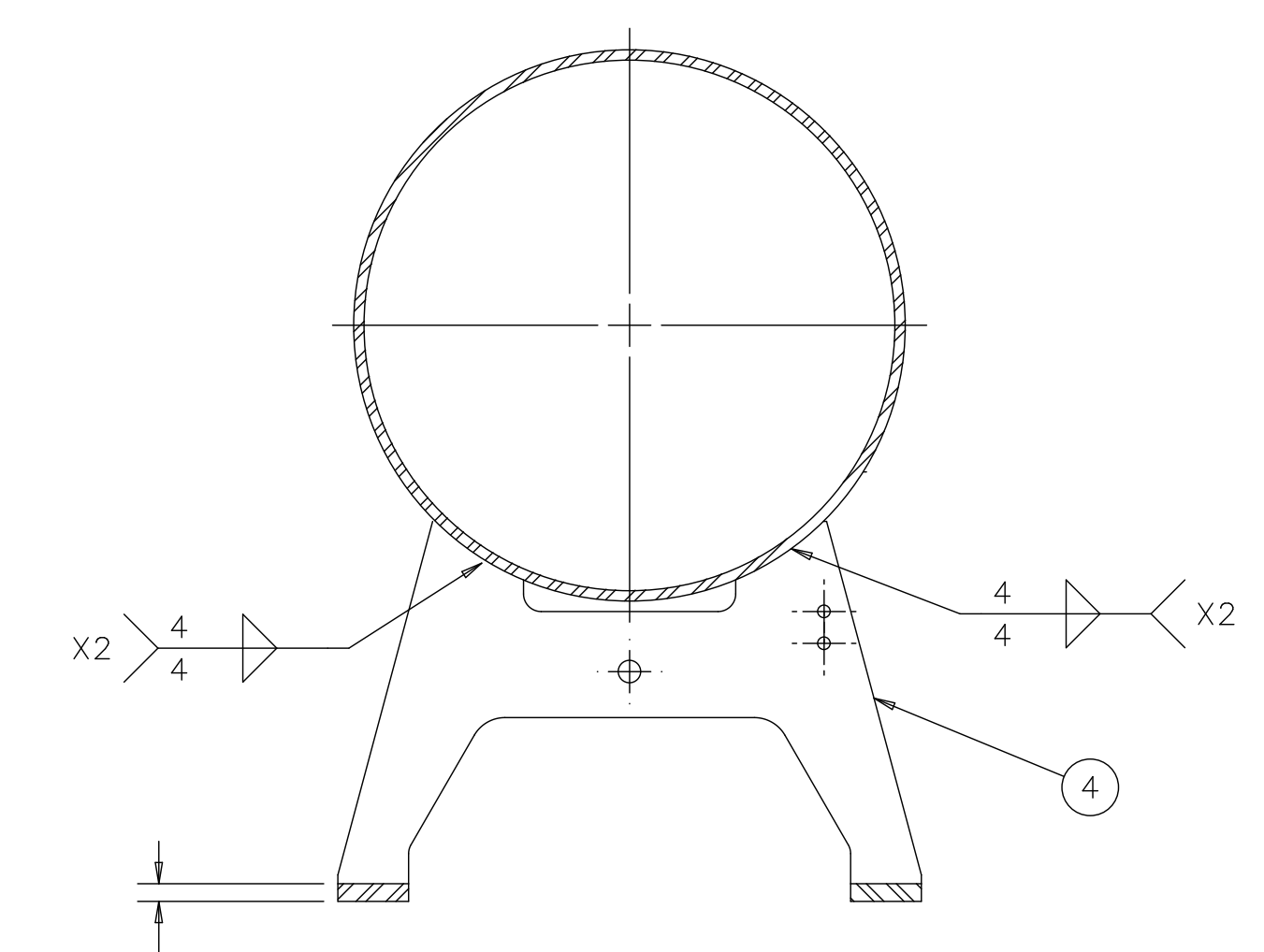
REVISION HISTORY				
CAD MAINTAINED. CHANGES SHALL BE INCORPORATED BY THE DESIGN ACTIVITY.				
ZONE	REV	DESCRIPTION	DATE	APPROVED
A		INITIAL RELEASE		



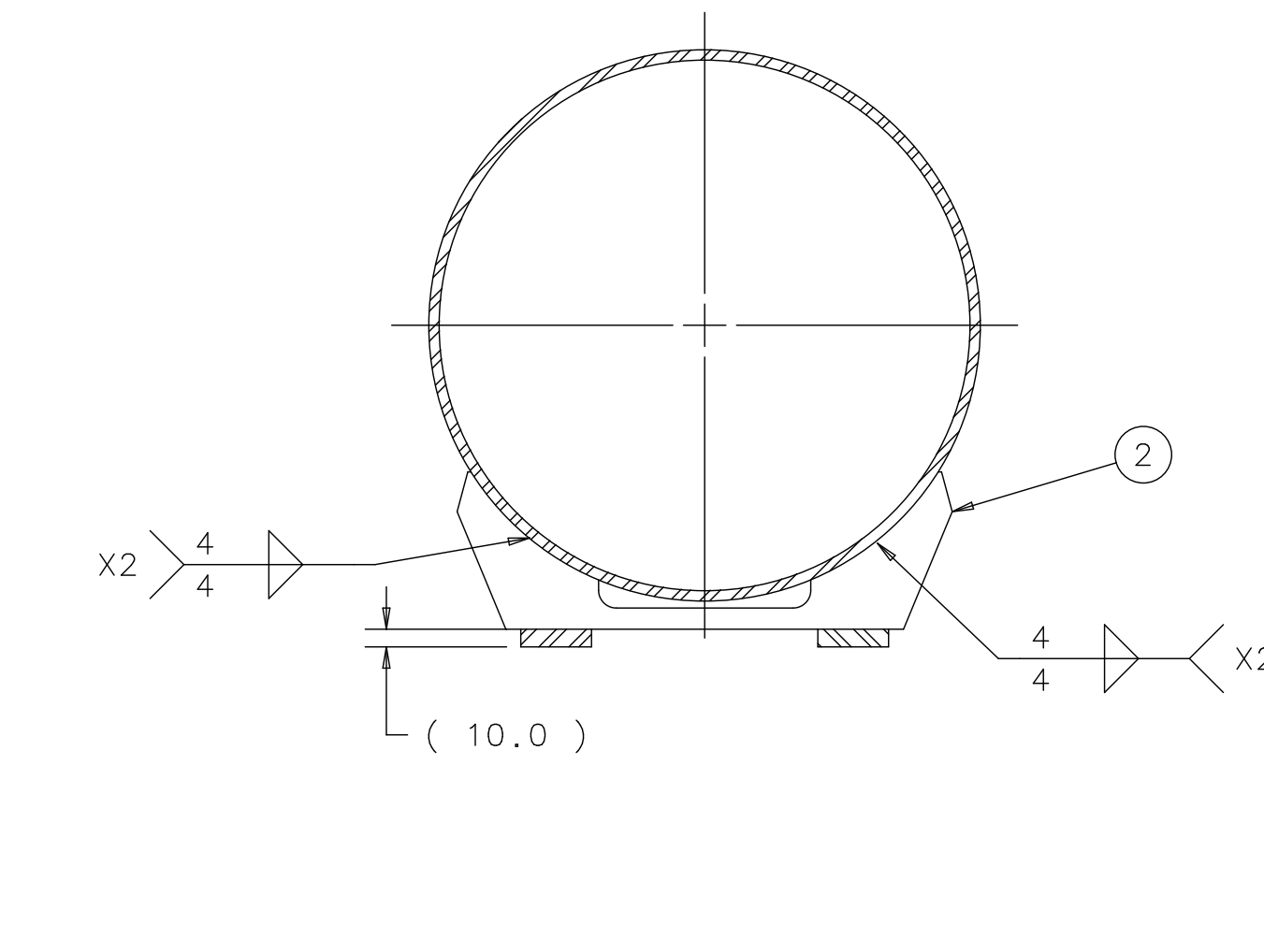
SECTION A-A
SCALE 1/4



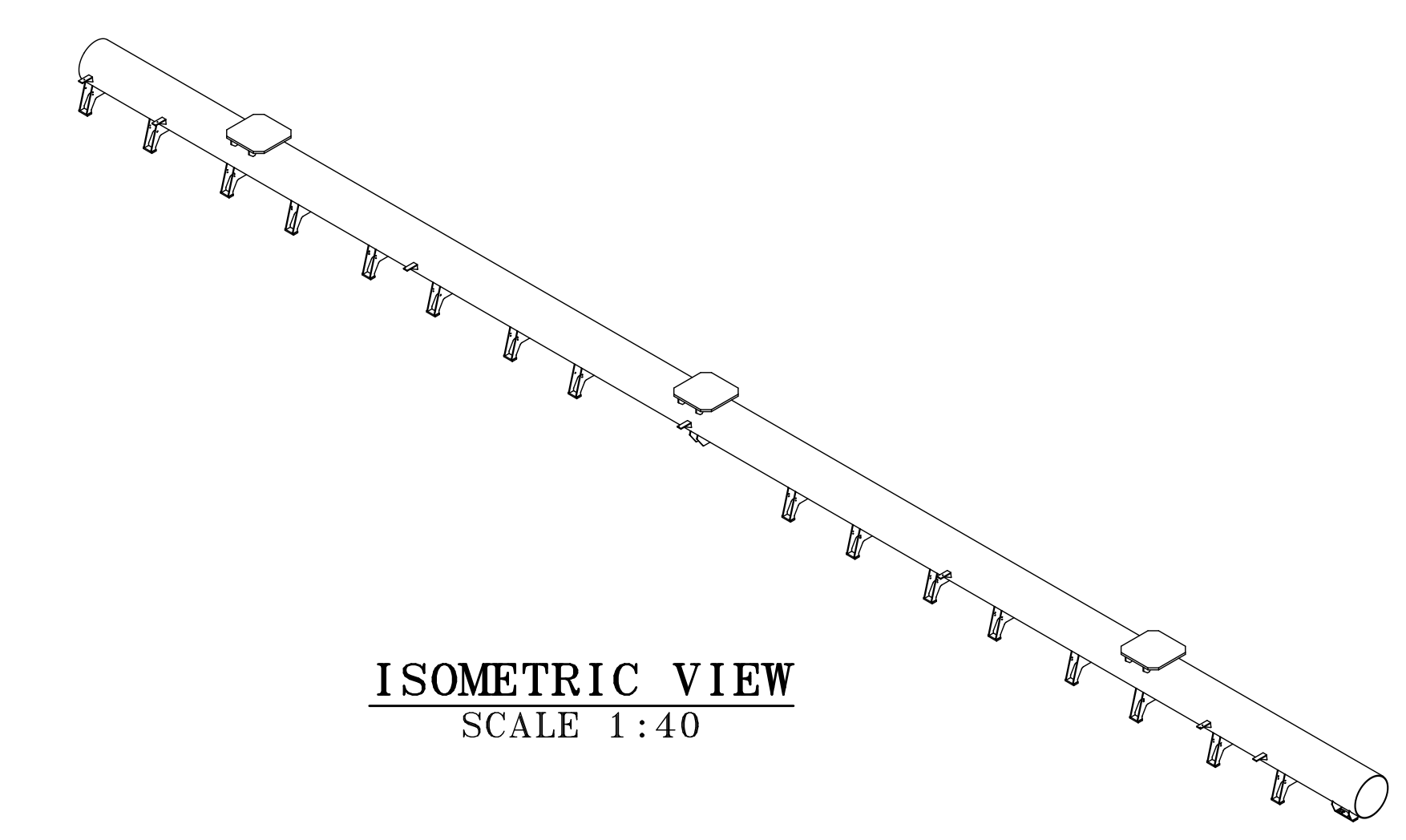
SECTION B-B
SCALE 1/4



SECTION C-C
SCALE 1/4



SECTION D-D
SCALE 1/4



ISOMETRIC VIEW
SCALE 1:40

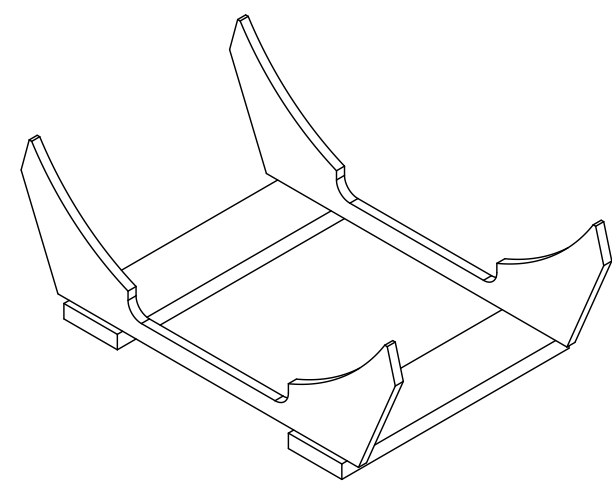
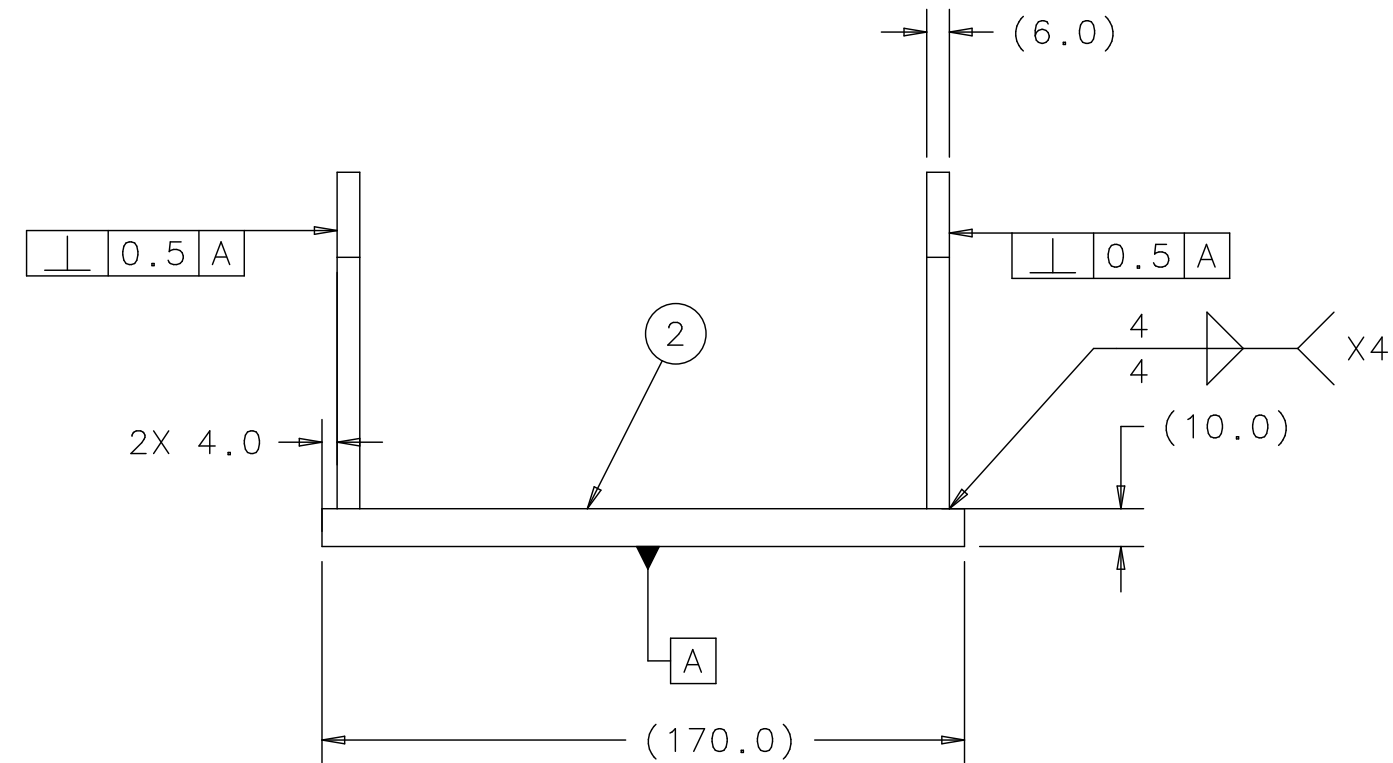
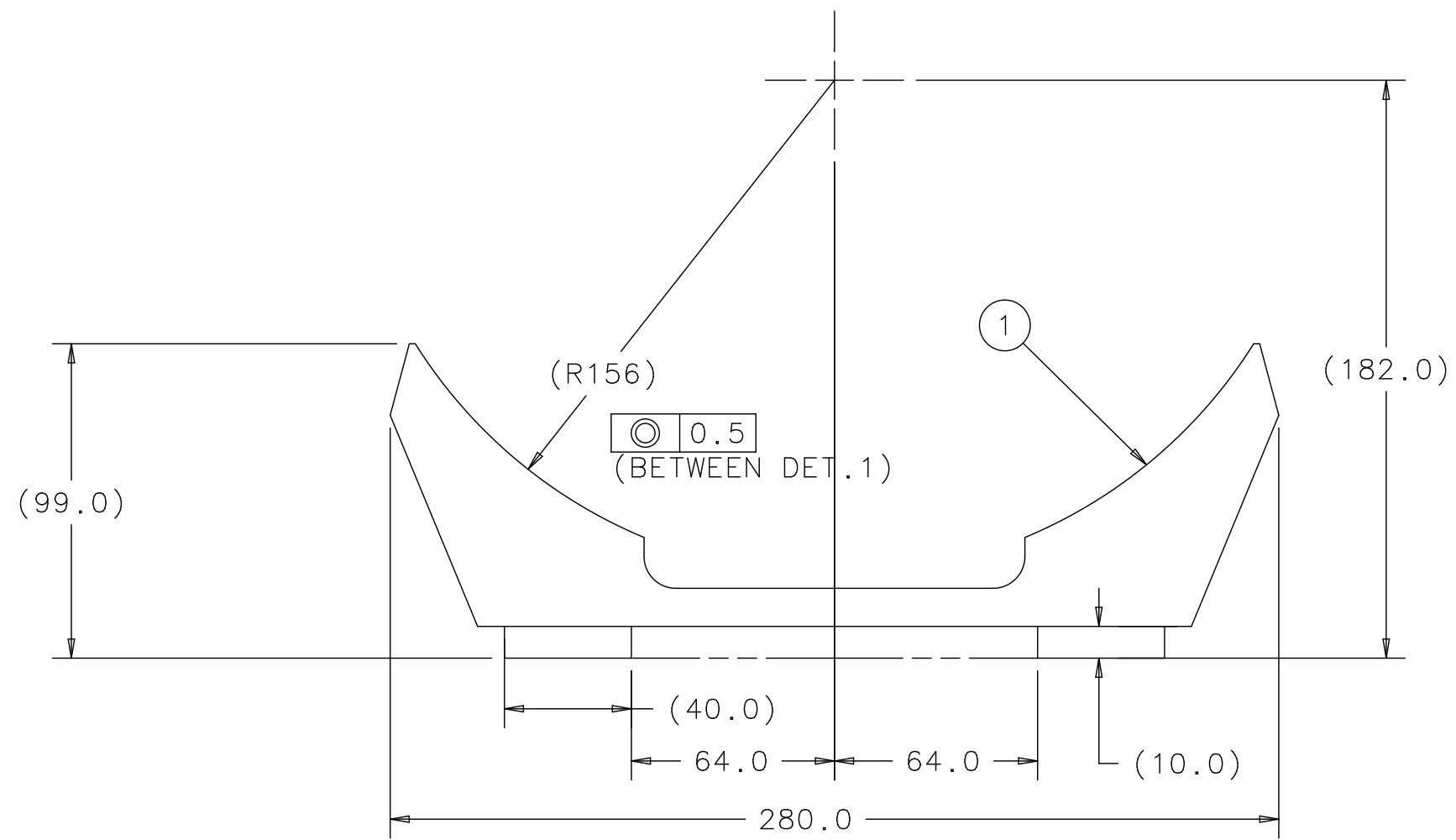
NOTES:
1. MATERIAL: SS 304L
2. FOR REFERENCE USE ONLY

ITEM	P. I. N.	DESCRIPTION	QTY
7	739031	INVAR ROD HGR PLATE	2
6	COM'L	T4CM COLDMASS HGR PIPE	1
4	A2-782691	Ø312.0 X 6.0 WALL, 11911.1 LG 304L SS	11
5	A2-782661	WPM BRACKET WLDMT	7
4	A2-782691	RF CAV HANGER-B WLDMT	11
3	A2-782681	RF CAV HANGER-A WLDMT	5
2	A2-782701	EXTENSION HANGER WLDMT	1
1	A2-782671	HGR PIPE HANGER WLDMT	3
ITEM	P. I. N.	DESCRIPTION	QTY

FINISH	N/A	UNLESS OTHERWISE SPECIFIED: DIMENSIONS ARE IN MILLIMETERS INTERPRET DIM PER ASME Y14.5M-1994 BREAK ALL SHARP EDGES .75 MAX. ALL MACH. SURFACES ±.2/ MAX.	DRAWN BY L. ROSINE	DATE 16/JAN/07	<p>FERMI NATIONAL ACCELERATOR LABORATORY UNITED STATES DEPARTMENT OF ENERGY P.O. BOX 500, BATAVIA, IL 60510-0500</p>
MATERIAL	AS NOTED ABOVE	TOLERANCES X ± .2 .3 ± 0.8 .XX ± 0.13 ANGLE ± 1°	CHECKED BY	DATE	
		THIRD ANGLE PROJECTION	ENGINEERED BY	DATE	TITLE
			DATABASE DESJ. EDMS	TEAM/GRUP T4CM DESIGN	
			CAD I-DEAS	SOLID MODEL NO. N/A	
			SIZE A0	CAGE CODE 0U5R6	DWG NO. D00000000782521
			SCALE 1:12.5	DO NOT SCALE DRAWING	REV A
					SHEET 1 OF 1

NEXT ASSY	USED ON
APPL.ICATION	

REVISION HISTORY				
CAD MAINTAINED. CHANGES SHALL BE INCORPORATED BY THE DESIGN ACTIVITY.				
ZONE	REV	DESCRIPTION	DATE	APPROVED
	A	INITIAL RELEASE		



ISOMETRIC VIEW
SCALE 1:4

APPL.	DATE	BY	DESCRIPTION
-	-	-	-
NEXT ASSY	USED ON		
APPLICATION			

ITEM	P.I.N.	DESCRIPTION	QTY
2	COM'L		2
1	A2-739071	EXTENSION HENGER PLATE	2

PARTS LIST

FINISH	N/A	UNLESS OTHERWISE SPECIFIED: DIMENSIONS ARE IN MILLIMETERS INTERPRET DIM PER ASME Y14.5M-1994 BREAK ALL SHARP EDGES .75 MAX. ALL MACH. SURFACES 3.2 MAX.	DRAWN BY	DATE	FERMI NATIONAL ACCELERATOR LABORATORY UNITED STATES DEPARTMENT OF ENERGY P.O. BOX 500, BATAVIA, IL 60510-0500
			Y.ORLOV	17JAN07	
MATERIAL	N/A	TOLERANCES	CHECKED BY	DATE	TITLE ILC, TYPE IV CRYOMODULE EXTENSION HENGER WLDMT EXTENSION_HENGER-HGR_ASSY
		THIRD ANGLE PROJECTION	ENGINEERED BY	DATE	SIZE A2 CAGE CODE 0U5R6 DWG NO. D0000000782701 REV A
		$X \pm 2$ $.X \pm 0.8$ $.XX \pm 0.13$ ANGLE $\pm 1^\circ$	DATABASE	TEAM/GROUP	SCALE 1:2 DO NOT SCALE DWG SHEET 1 OF 1
			DESY EDMS	SOLID MODEL NO.	
			CAD	N/A	
			I-DEAS		