



Laboratoire d'Anecy-le-Vieux  
de Physique des Particules

# Final doublet integration: mechanical issues

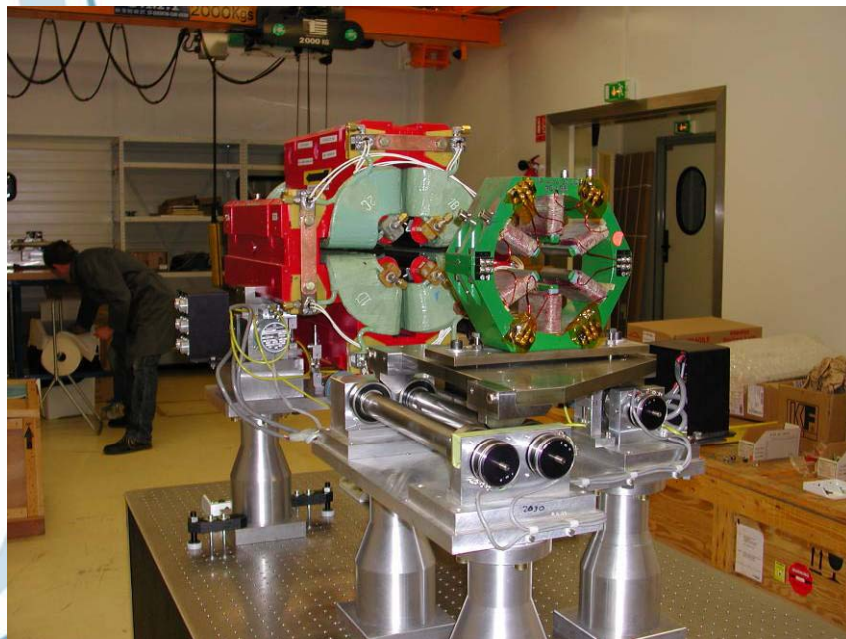
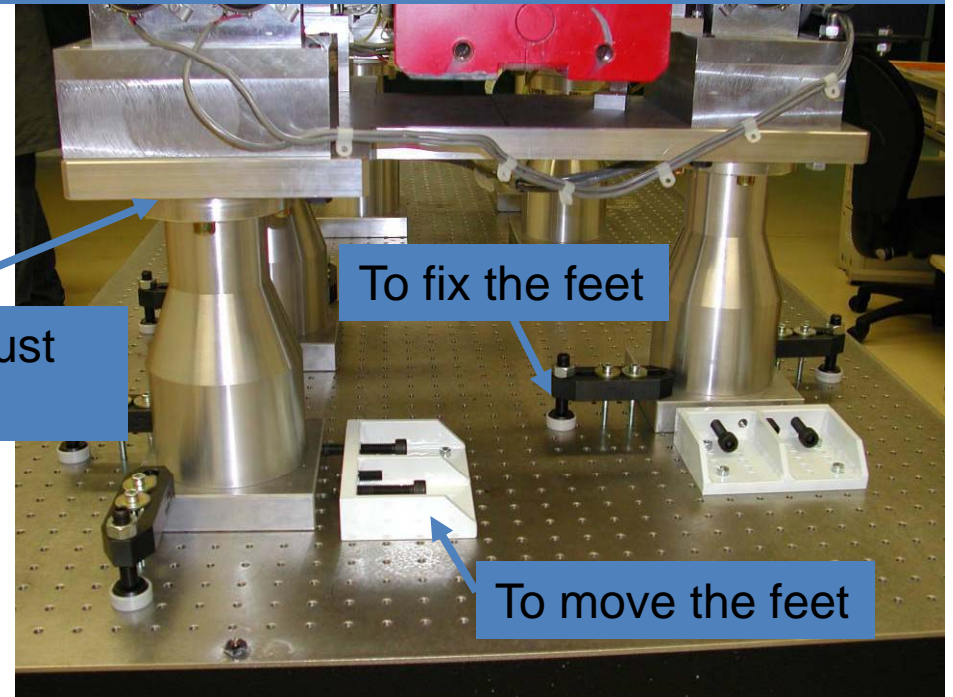
A.Jeremie

N.Geffroy, B.Bolzon, G.Gaillard,  
J.P.Baud





1 sextupole and 1 quadrupole on CERN block (easier access for the moment) to test the mover feet mounting and measurements (see B.Bolzon's presentation)



Next step: put all components on definitive table with water flow in magnets

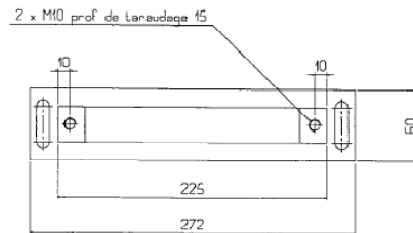
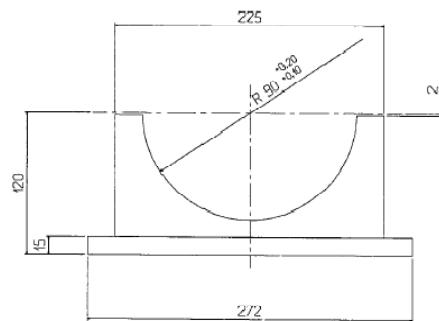
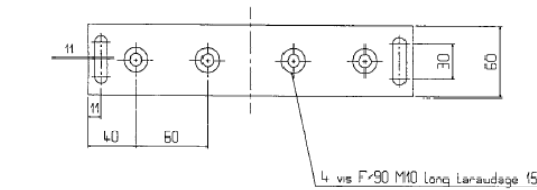


# S-band BPM support

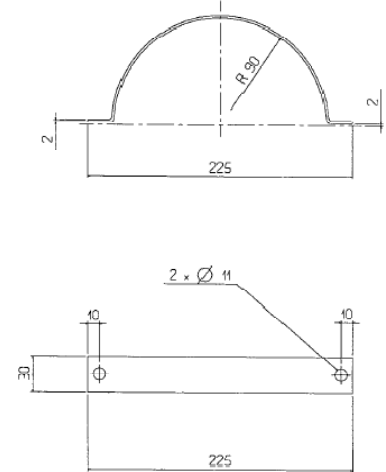
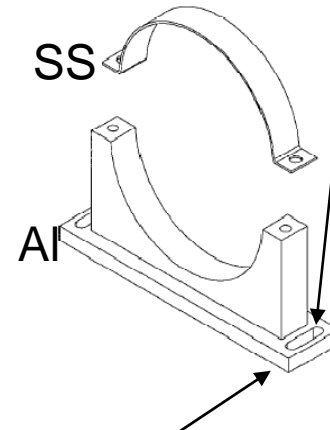
Supports will be ready mid-June

S-BPM about 20kg

(see Eun-san Kim's presentation)



Adjustable in beam direction



Adjustable in height with washers

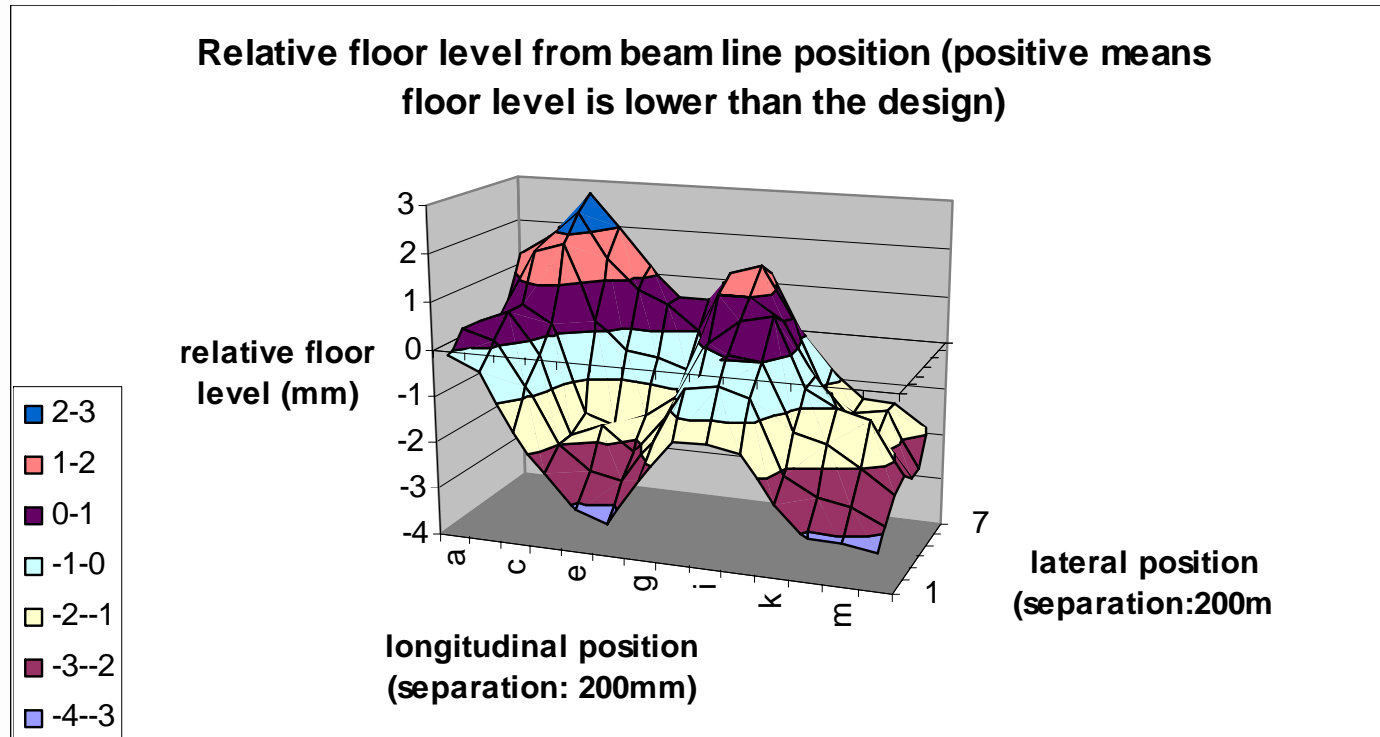
4 brides fortal avec 4 colliers inox

Adjustable longitudinally on intermediate support (not shown)



REV	DESCRIPTION	DATE
1	1	
2	2	
3	3	
4	4	
5	5	
6	6	
7	7	
8	8	
9	9	
10	10	
11	11	
12	12	
13	13	
14	14	
15	15	
16	16	
17	17	
18	18	
19	19	
20	20	
21	21	
22	22	
23	23	
24	24	
25	25	
26	26	
27	27	
28	28	
29	29	
30	30	
31	31	
32	32	
33	33	
34	34	
35	35	
36	36	
37	37	
38	38	
39	39	
40	40	
41	41	
42	42	
43	43	
44	44	
45	45	
46	46	
47	47	
48	48	
49	49	
50	50	
51	51	
52	52	
53	53	
54	54	
55	55	
56	56	
57	57	
58	58	
59	59	
60	60	
61	61	
62	62	
63	63	
64	64	
65	65	
66	66	
67	67	
68	68	
69	69	
70	70	
71	71	
72	72	
73	73	
74	74	
75	75	
76	76	
77	77	
78	78	
79	79	
80	80	
81	81	
82	82	
83	83	
84	84	
85	85	
86	86	
87	87	
88	88	
89	89	
90	90	
91	91	
92	92	
93	93	
94	94	
95	95	
96	96	
97	97	
98	98	
99	99	
100	100	

# Floor measurements at FD by KEK team



At Annecy, ground was polished to 1mm. There is also the solution of a « liquid » cement that is self-levelling: SIKAGROUT 217

Whatever solution is chosen, who does the work? KEK or LAPP when at KEK?

# Schedule

- FD support studies: Installation, Connection to water system, Vibration measurements **June**
- BPM support test: Install on magnet, Vibration measurements **June-July**
- Dismounting and packing and transportation **July**

# Once at KEK

- Install plates and bolt them on floor
- Install table on plates (need crane)
- Install movers
- Open and close magnets for final BPM installation
- Install magnets on movers (need crane)
- Adjust position of BPM wr to magnet
- Adjust magnet position wr to beam position (geometer?)

September-October

# Questions

- Since at KEK, 110V, 60Hz and in Europe 220V and 50Hz, is it possible to lend us some machines while at KEK?
- When we bolt table on floor, is there a percussion drill available? Who does the drilling with KEK drill?
- Our mechanic has a LAPP crane permit. Will he be allowed to manipulate crane at KEK?
- How is the work with the alignment team coordination? How and by whom will the fine adjustments on the FD supports be done?
- Who and when will the S-BPM's be installed, including dismounting Q- and S-magnets?
- If help is needed at KEK, who do we contact?