



Positron sources and liquid target R&D at BINP

Pavel Logachev,
Nanobeam 2008,
BINP, Novosibirsk.



Development of positron production system.

- High power positron production target
- Effective matching device
- Effective accelerating and focusing system for positron beam
- Joint optimization of all these three items.



Basic problems

- A huge increase of the target temperature during powerful pulse.
- Long macro pulse leads to stronger kick-effect and decreasing of useful magnetic field maximum in FC magnet.
- Longer pulse also means lower accelerating gradient in the first structure for positrons.
- High positron production rate leads to high activation level and radiation damages of positron production system elements.



The basic directions of R&D

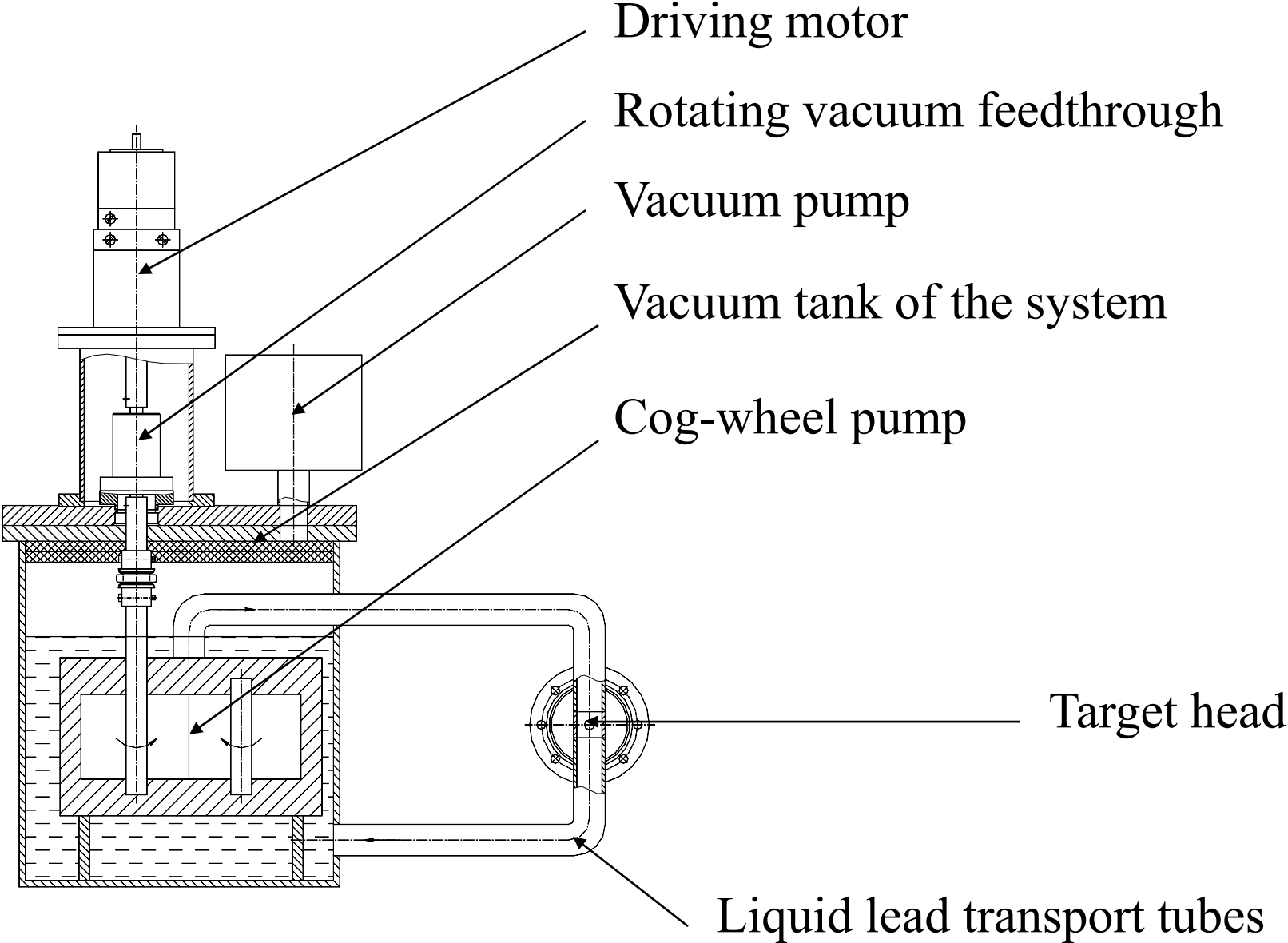
- High power liquid lead target in comparison with rotating solid-state WRe target.
- Effective matching device (Flux Concentrator, Lithium Lens).
- High gradient accelerating structure immersed in the max. possible DC magnetic field
- High radiation resistance of all elements.



The main aims of this R&D.

- To determine the technical limit of driving beam intensity and duration for each component of positron production system.
- To optimize each component for the best integrated system performance.

Scheme of the prototype of liquid lead positron production target.





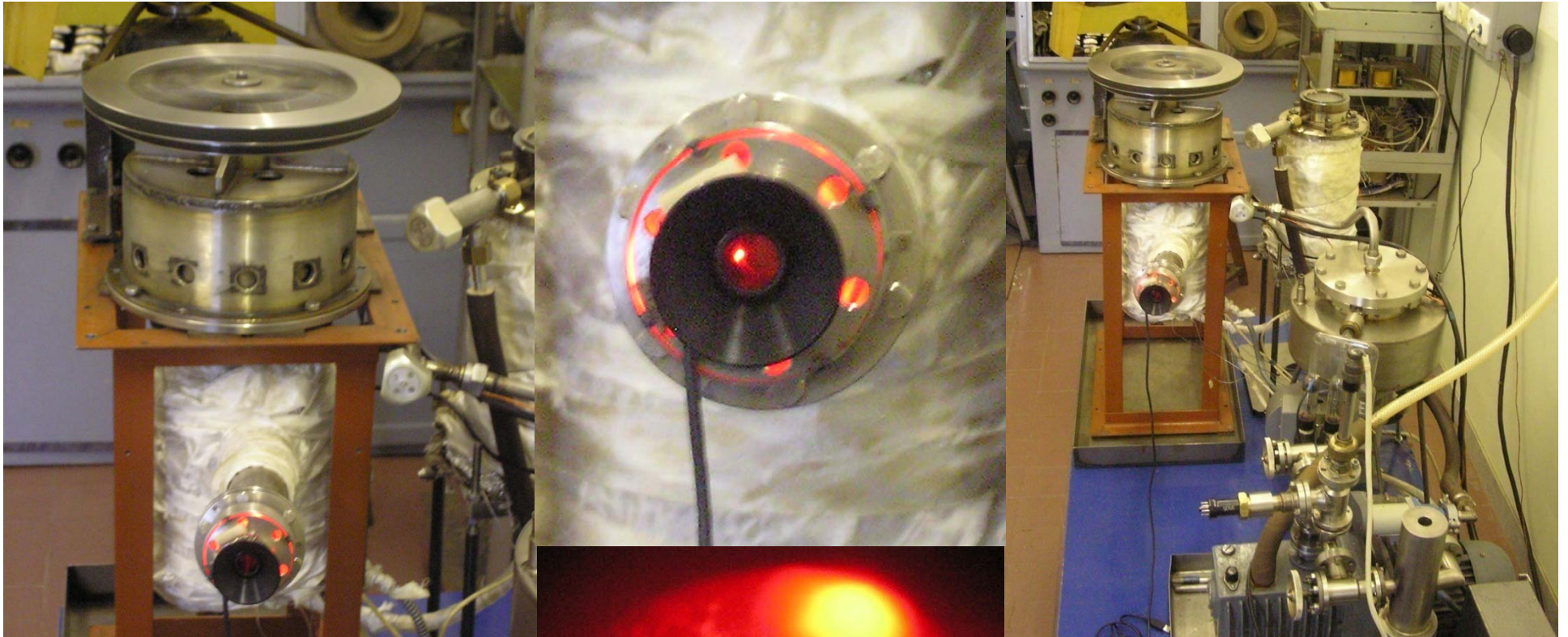
The present stage of BINP activity in liquid lead target development.

- 20000 h of liquid lead contour successful run with cog-wheel pump has been reached (90% Pb, 10% (mass)Sn alloy, 300°C).
- The shock-wave test of BN windows showed the dynamical stretch limit at the level of 39 GPa. For previous NLC design the value of 3-4 GPa was estimated. For present ILC variant this value will be even less (about 0.01 GPa) due to longer macro pulse.
- The test of window braising technology successfully finished.
- The prototype of liquid lead positron production target is under commissioning now. This prototype is specially designed for output window destruction test on KEKB.



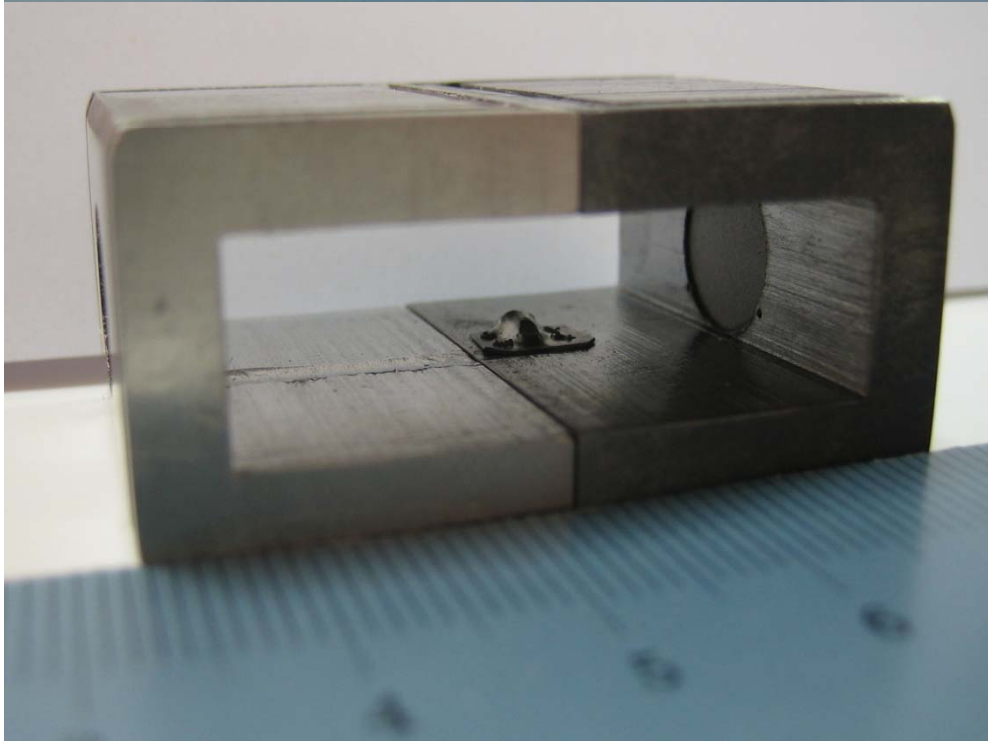
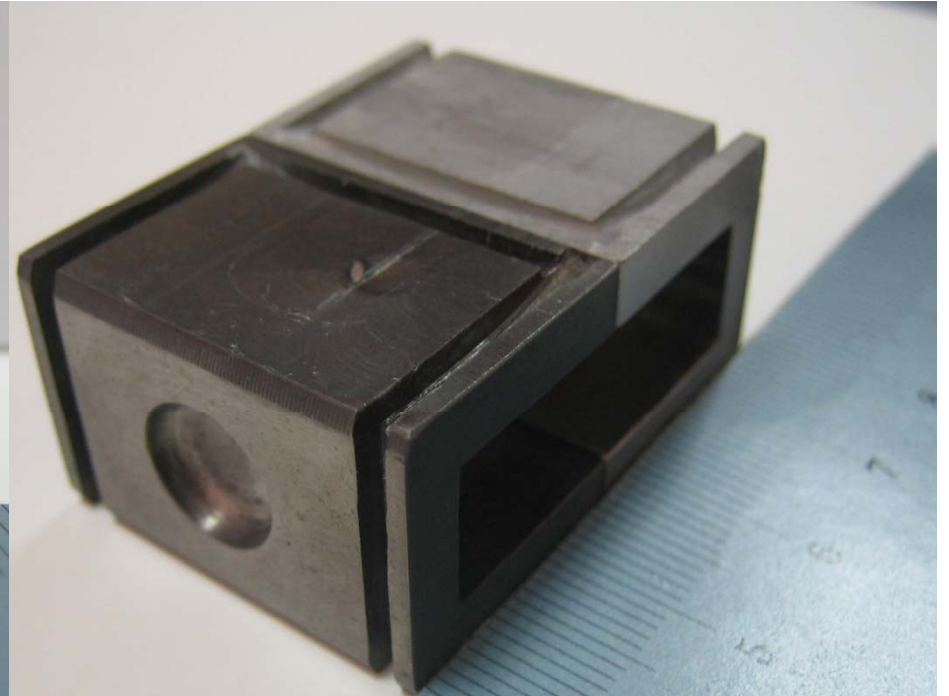
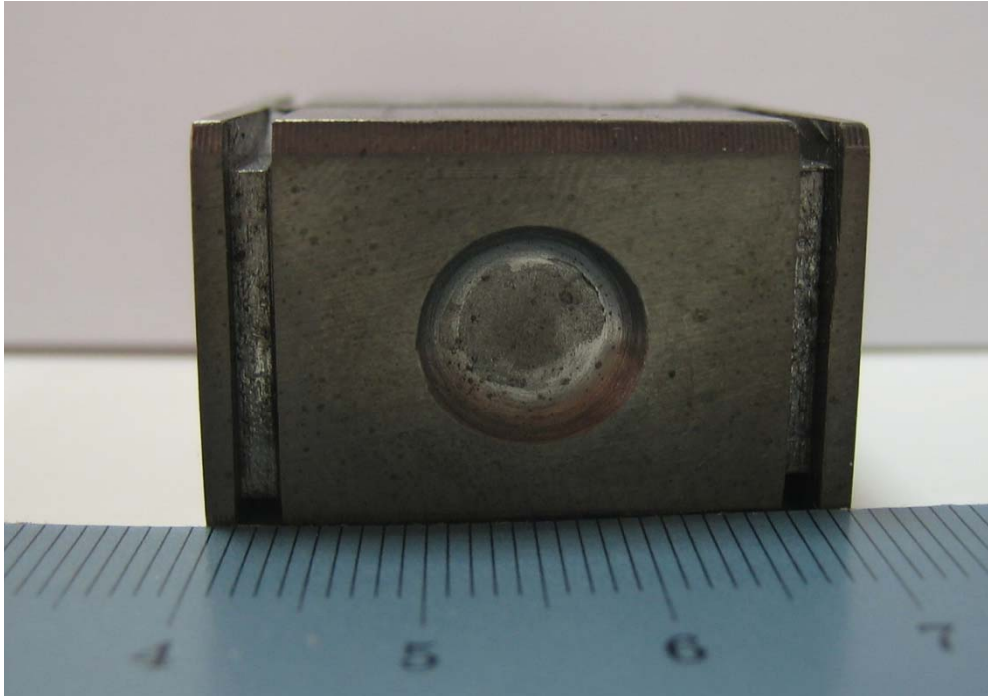
The parts of liquid lead cog-wheel pump





Liquid lead jet in vacuum

Cog-wheel pump test bench is in continuous run
(20000 h) with liquid lead jet. 90% Pb, 10% Sn alloy at 300°C.



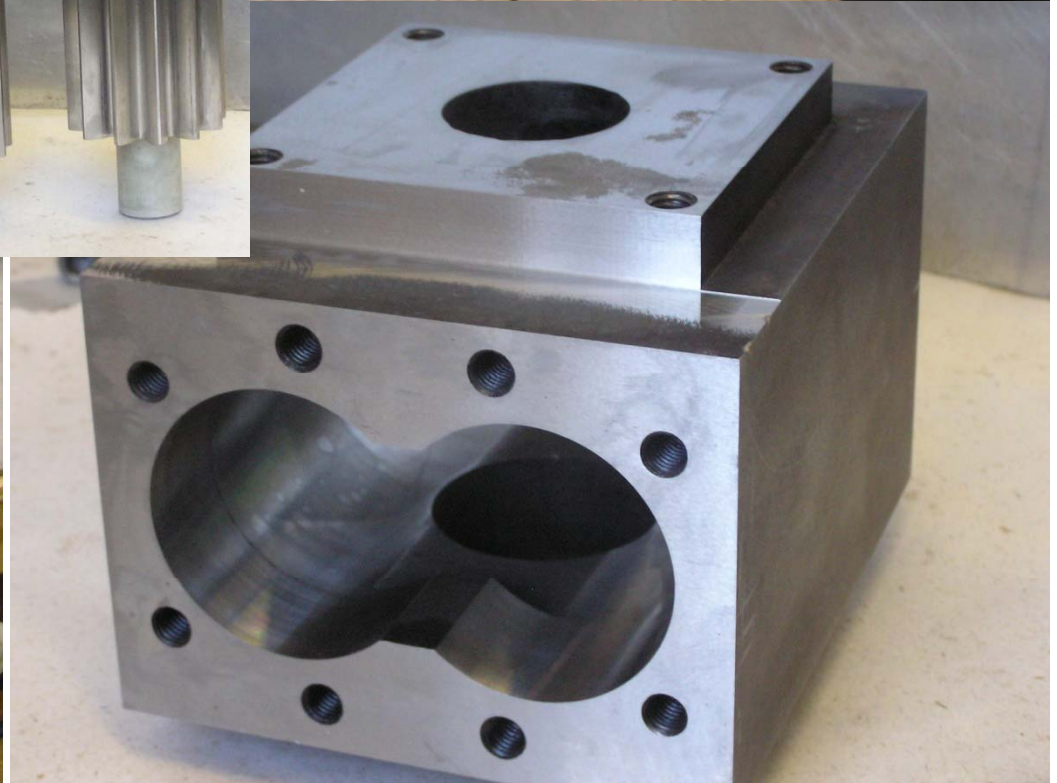
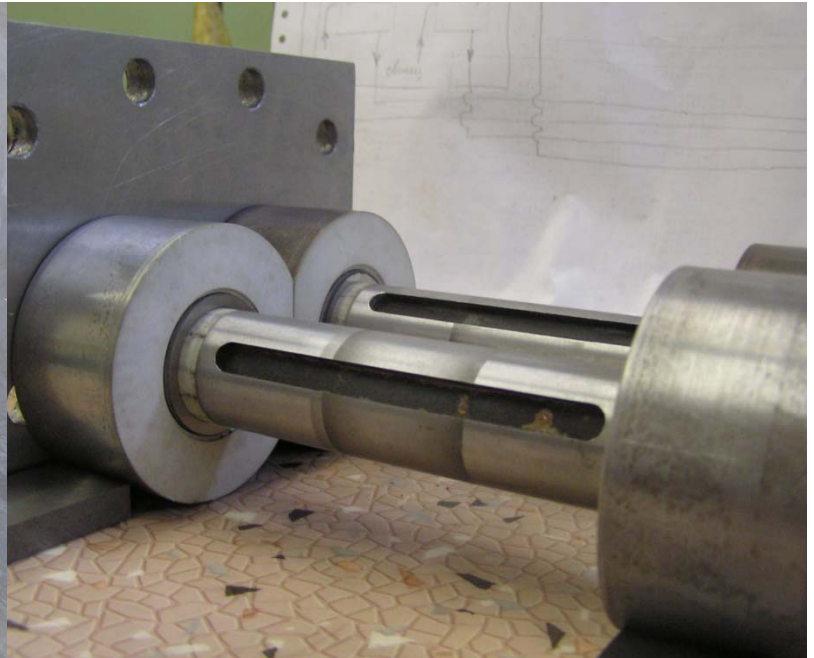
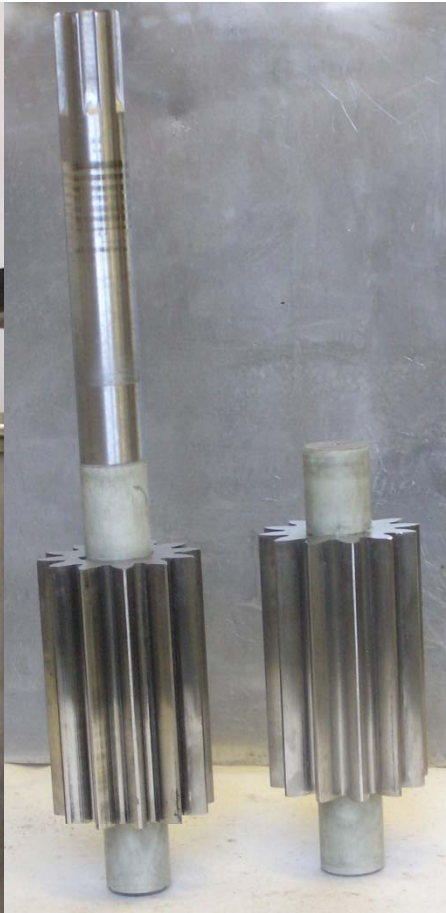
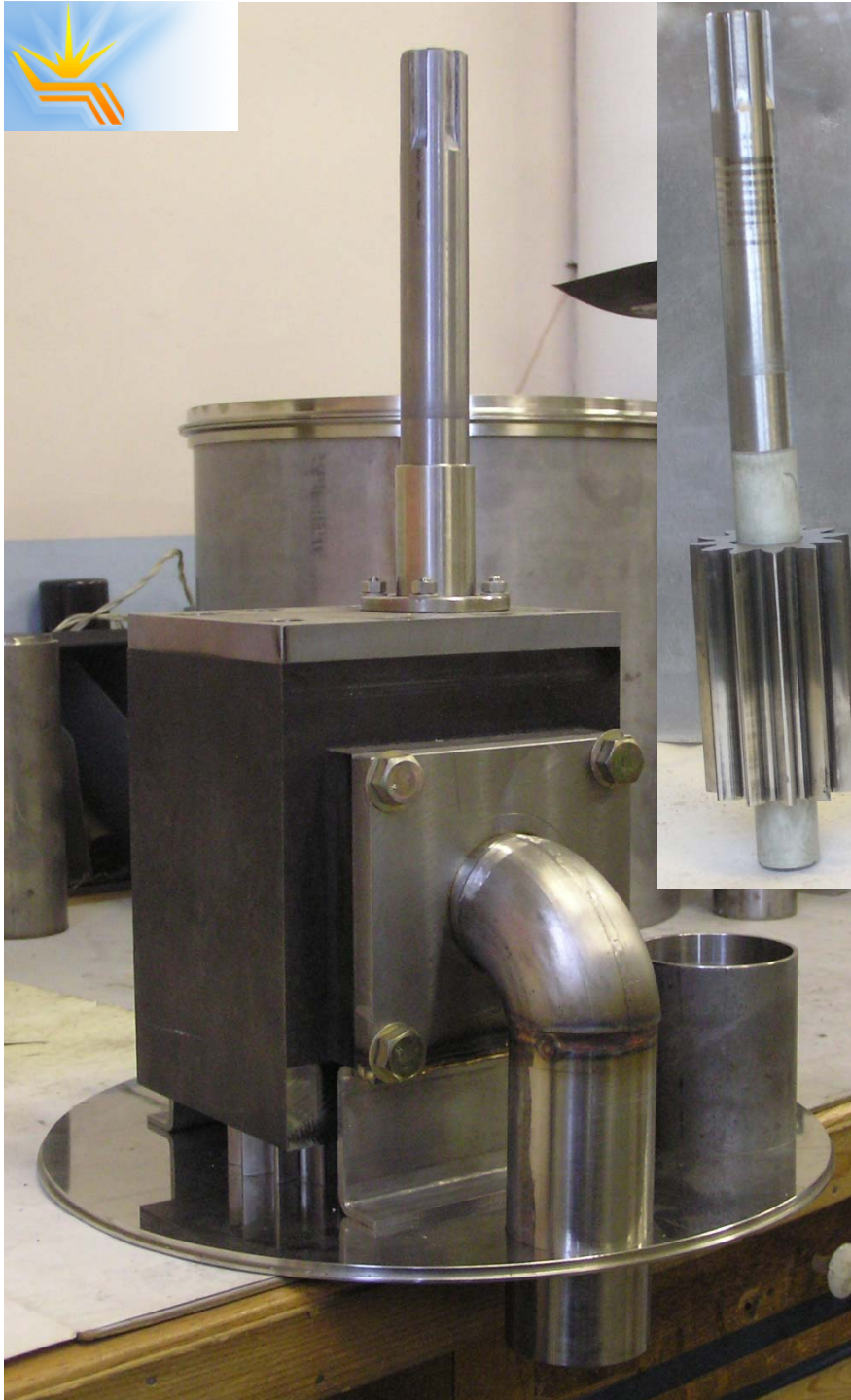
**Prototype of target head
with BN windows.**



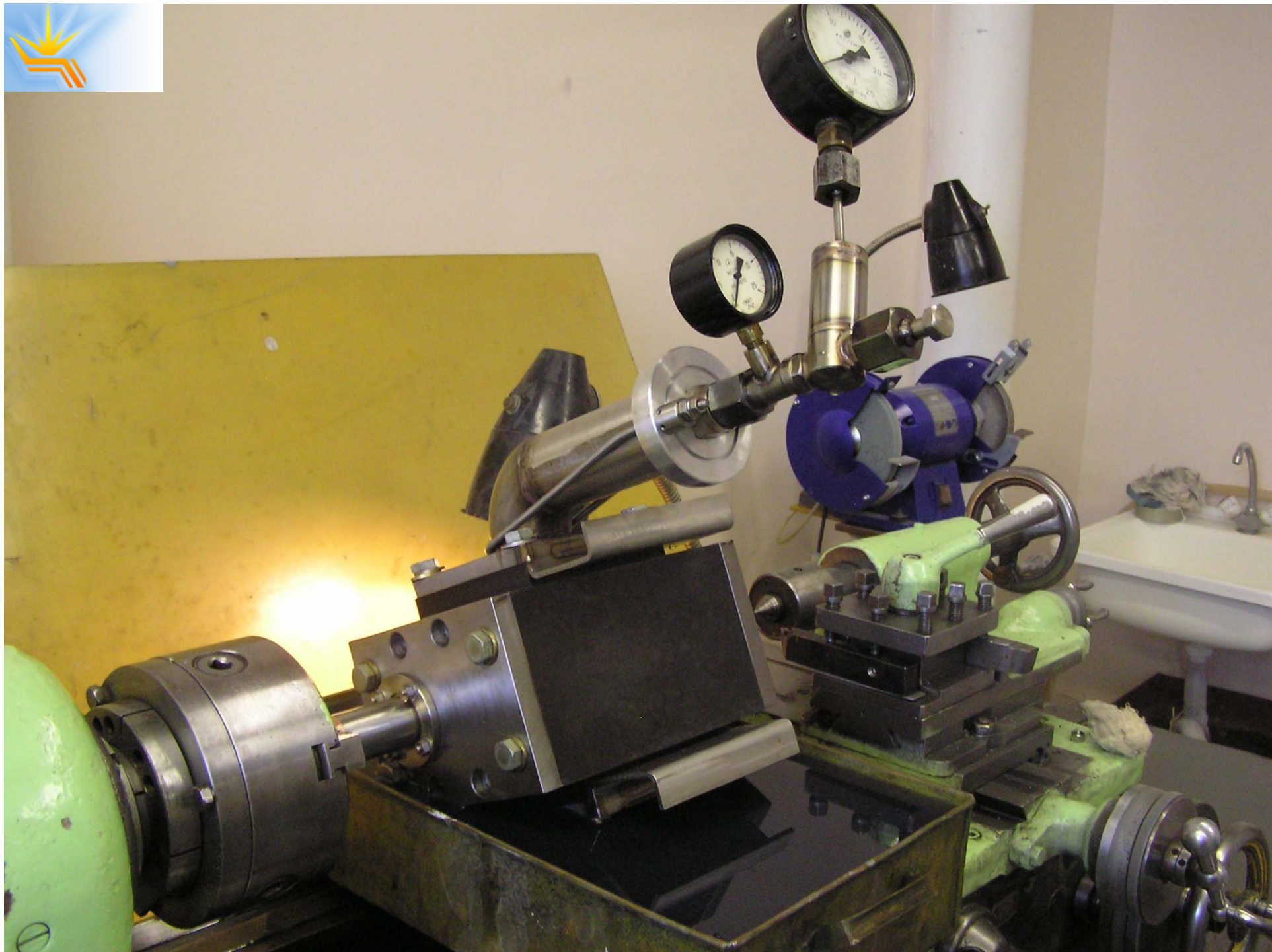
BN disks for windows



Test samples after 1000 h exposition
in liquid lead alloy at 300°C
(no any damage of brazing joint).







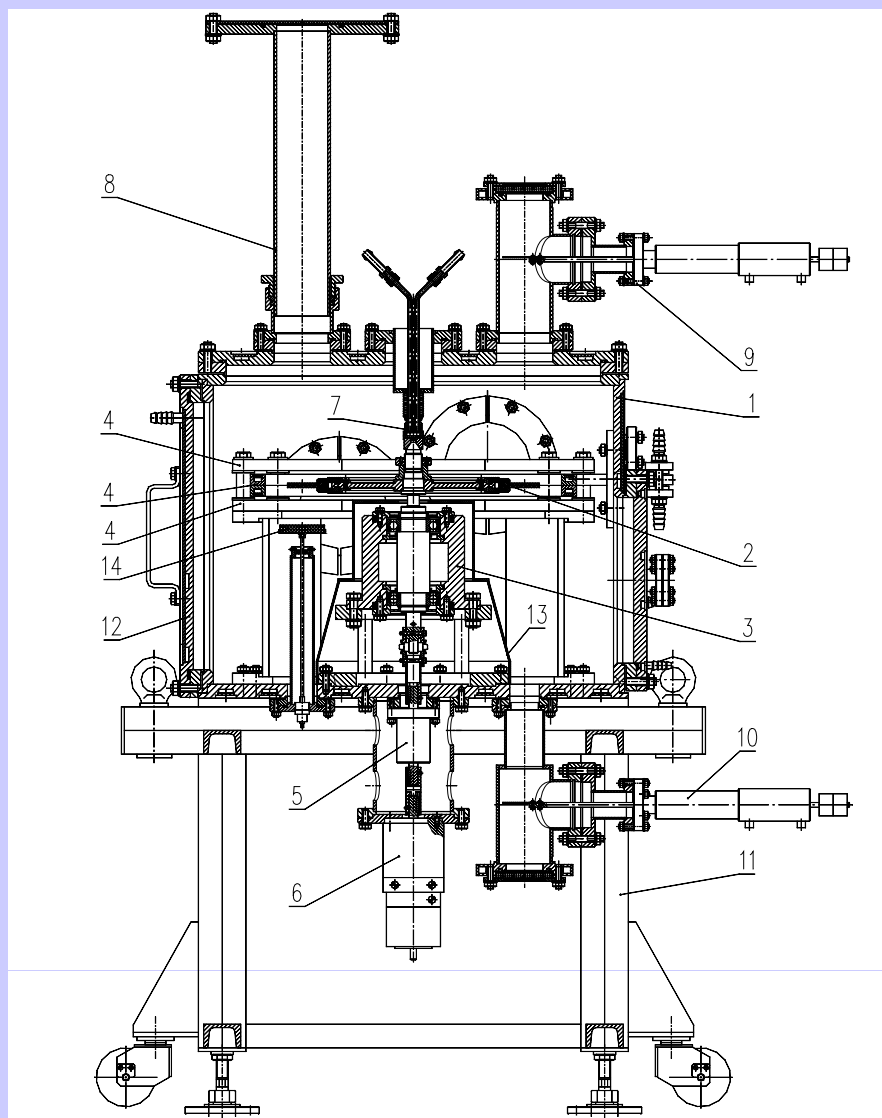


BINP experience in solid state rotating targets.

- The target is cooled by thermal radiation
- Max reached power in 1 cm diameter spot – 70 kW DC.
- 1200 – 3000 RPM.
- Target operating temperature is 2200 K.
- Target material is high density graphite
- 80 h non-stop run at 50 kW.



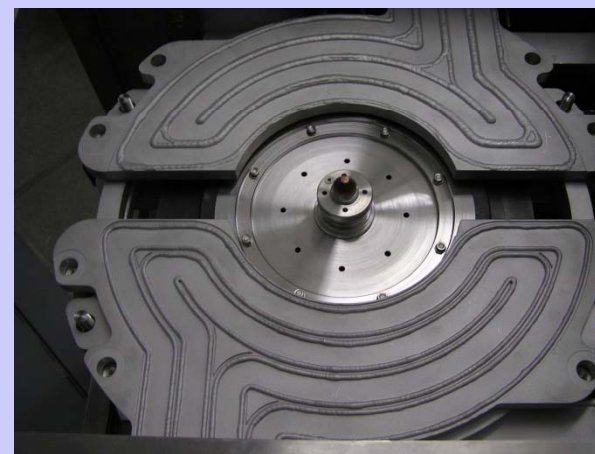
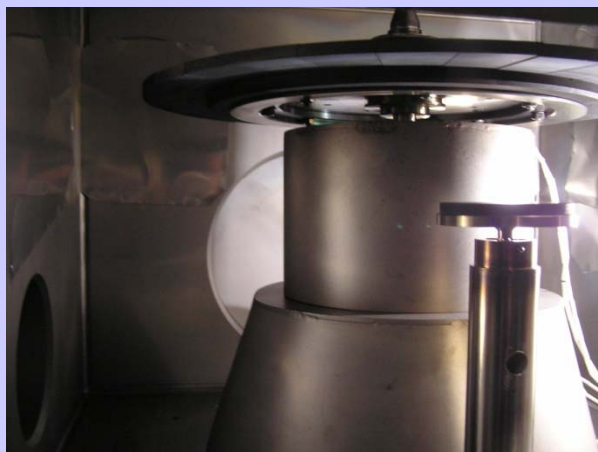
The scheme of prototype.



- 1 - vacuum chamber,*
- 2 – converters wheel,*
- 3 - bearing unit,*
- 4 - cooling panels,*
- 5 - rotary motion feedthrough,*
- 6 - electric motor,*
- 7 - shaft cooling unit,*
- 8 – connective vacuum chamber,*
- 9,10 – optic windows units,*
- 11 - stand,*
- 12 – removable flange,*
- 13 - heat shield,*
- 14 – measuring sensor*



Views of prototype.





main reservoir

electromotors

pumps

pipes

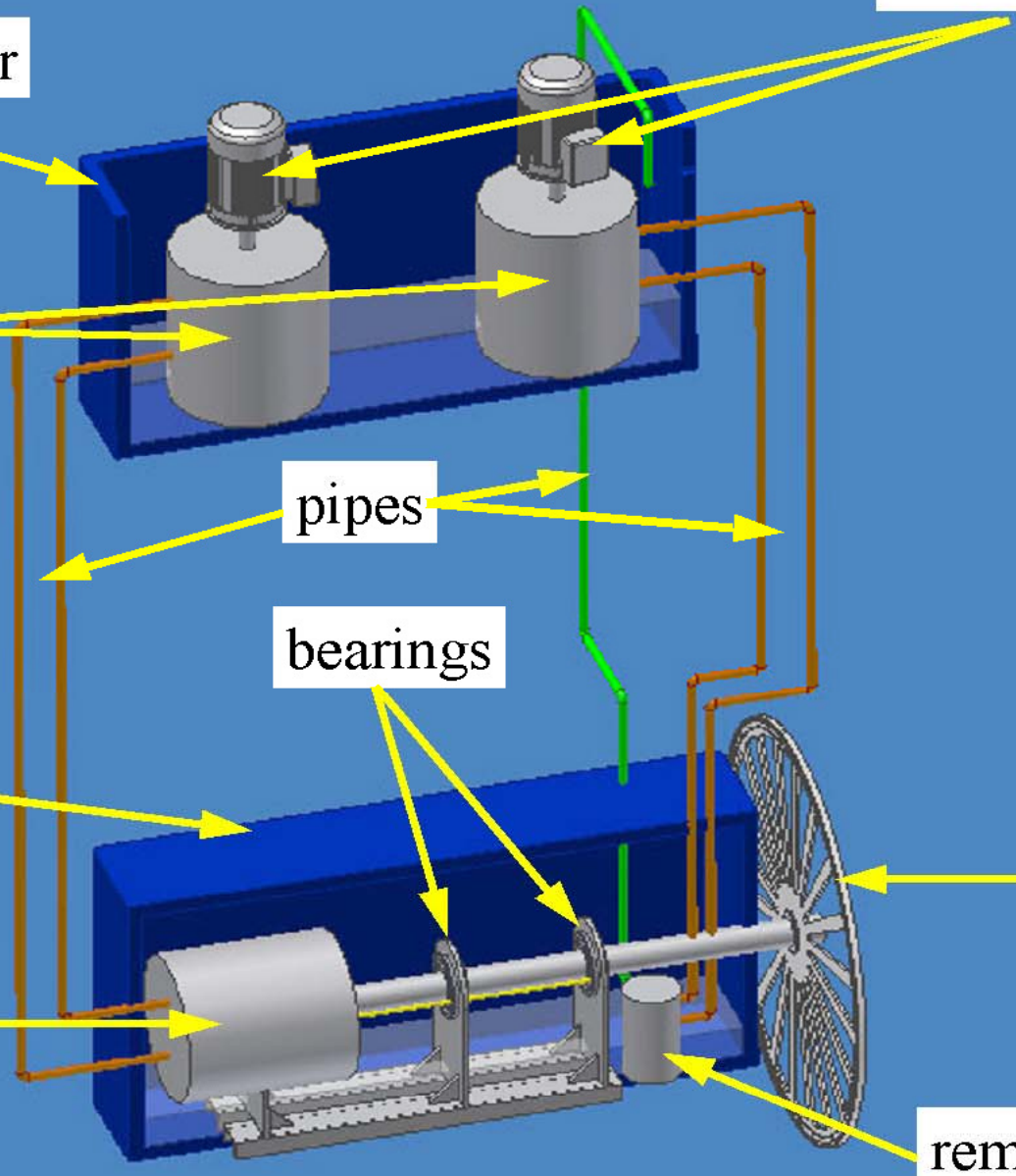
bearings

tank

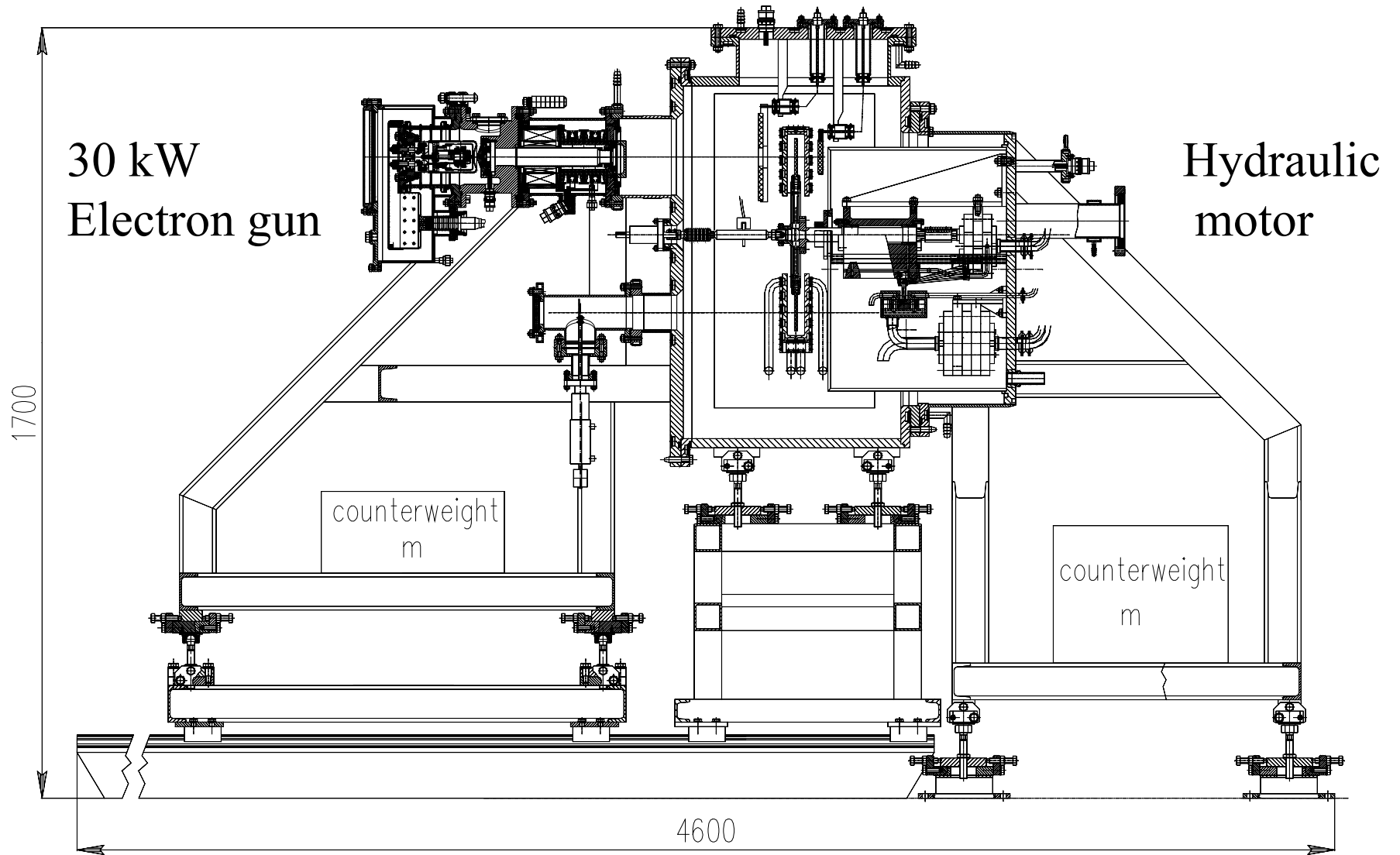
target

drive

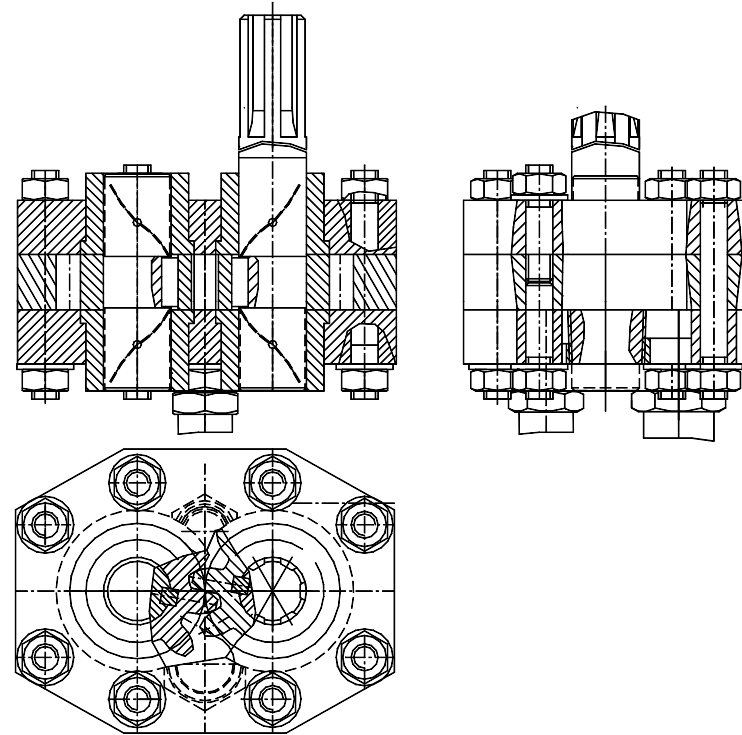
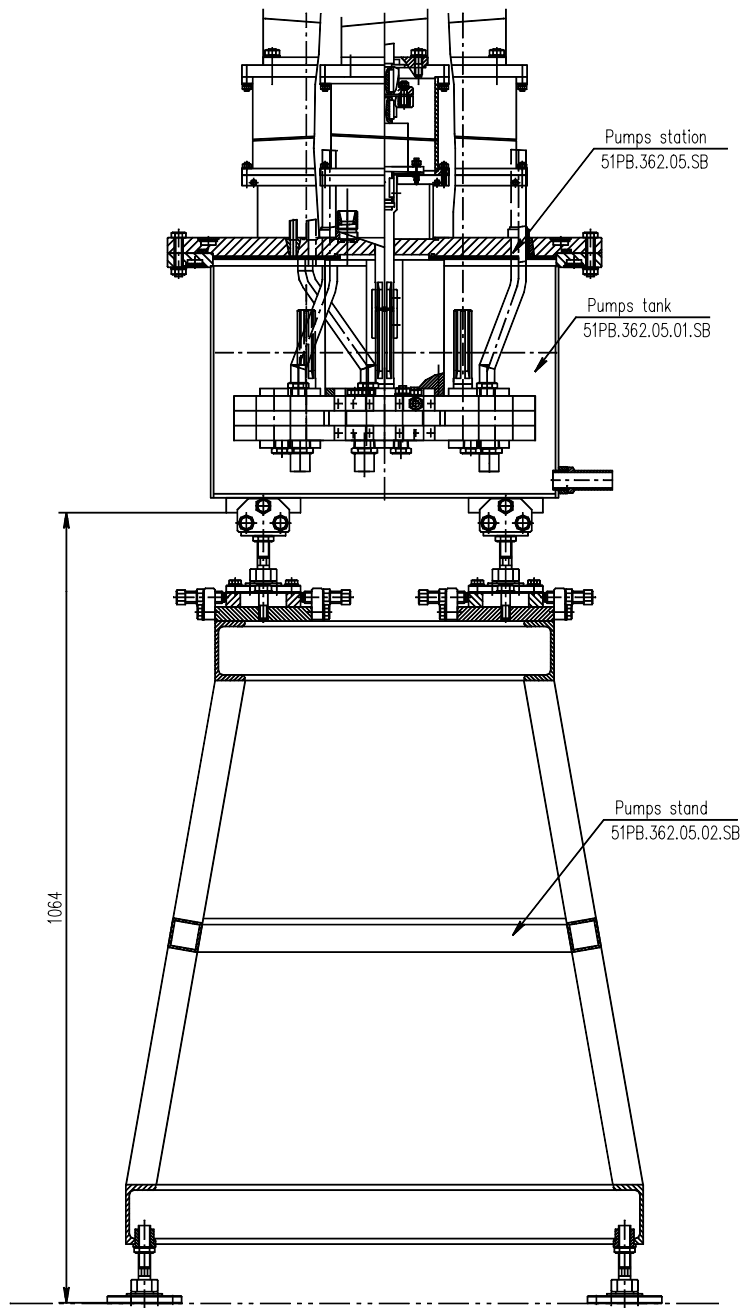
removing pump



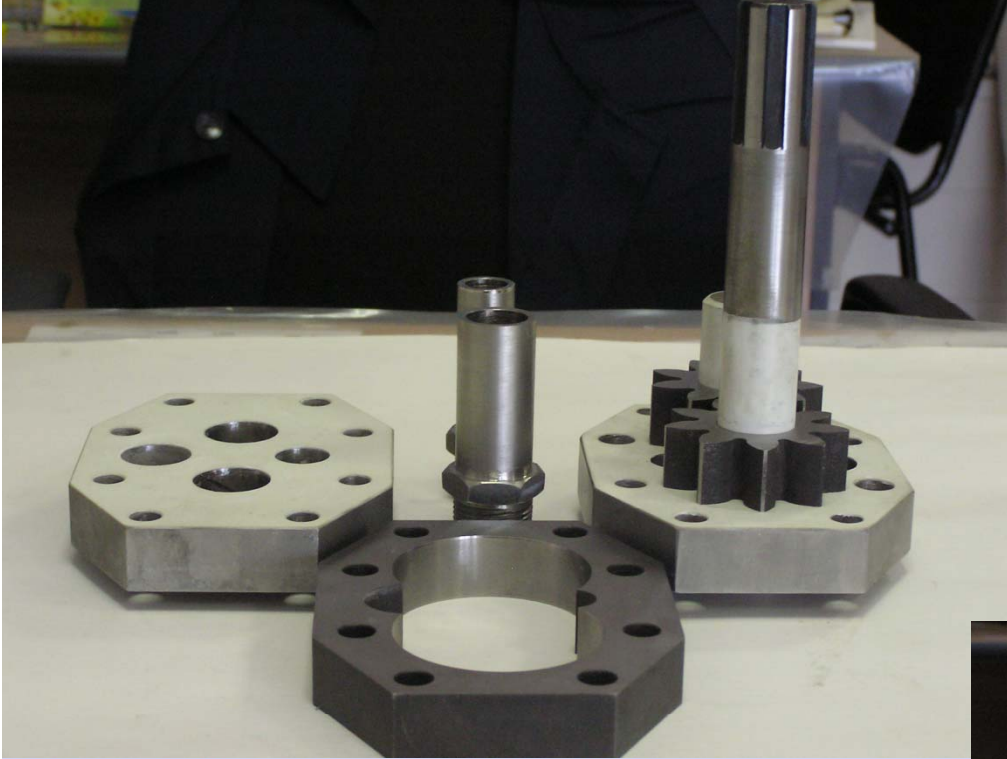
Solid state rotating target test bench



Hydraulic pumps



Cog-wheel pump



- Volume of pump

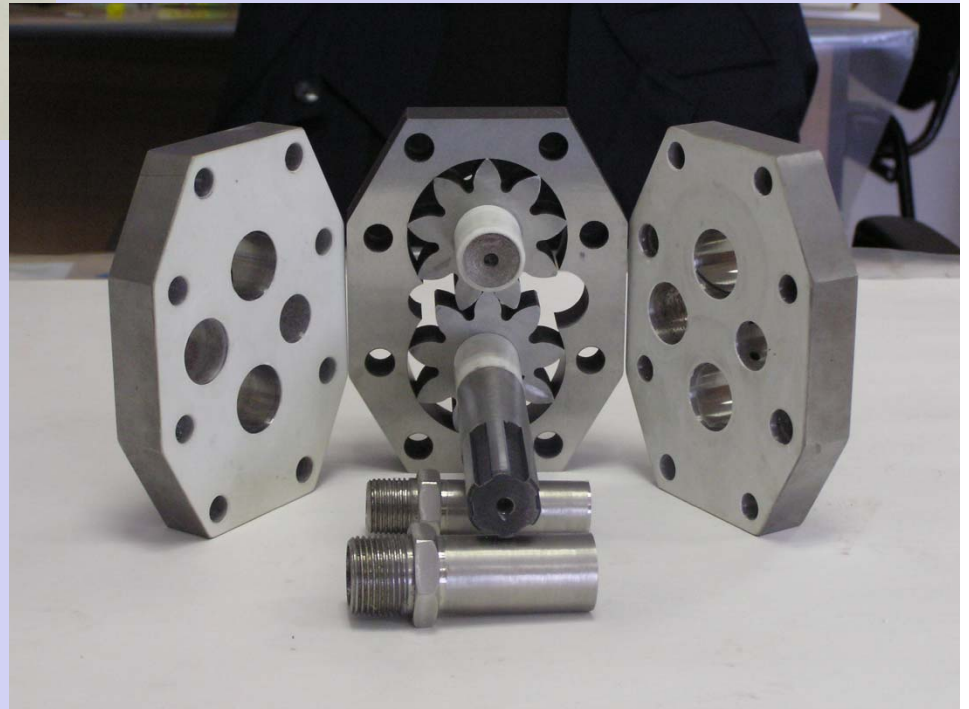
$$V_0 = 2\pi Dmb = 35.06 \text{ cm}^3$$

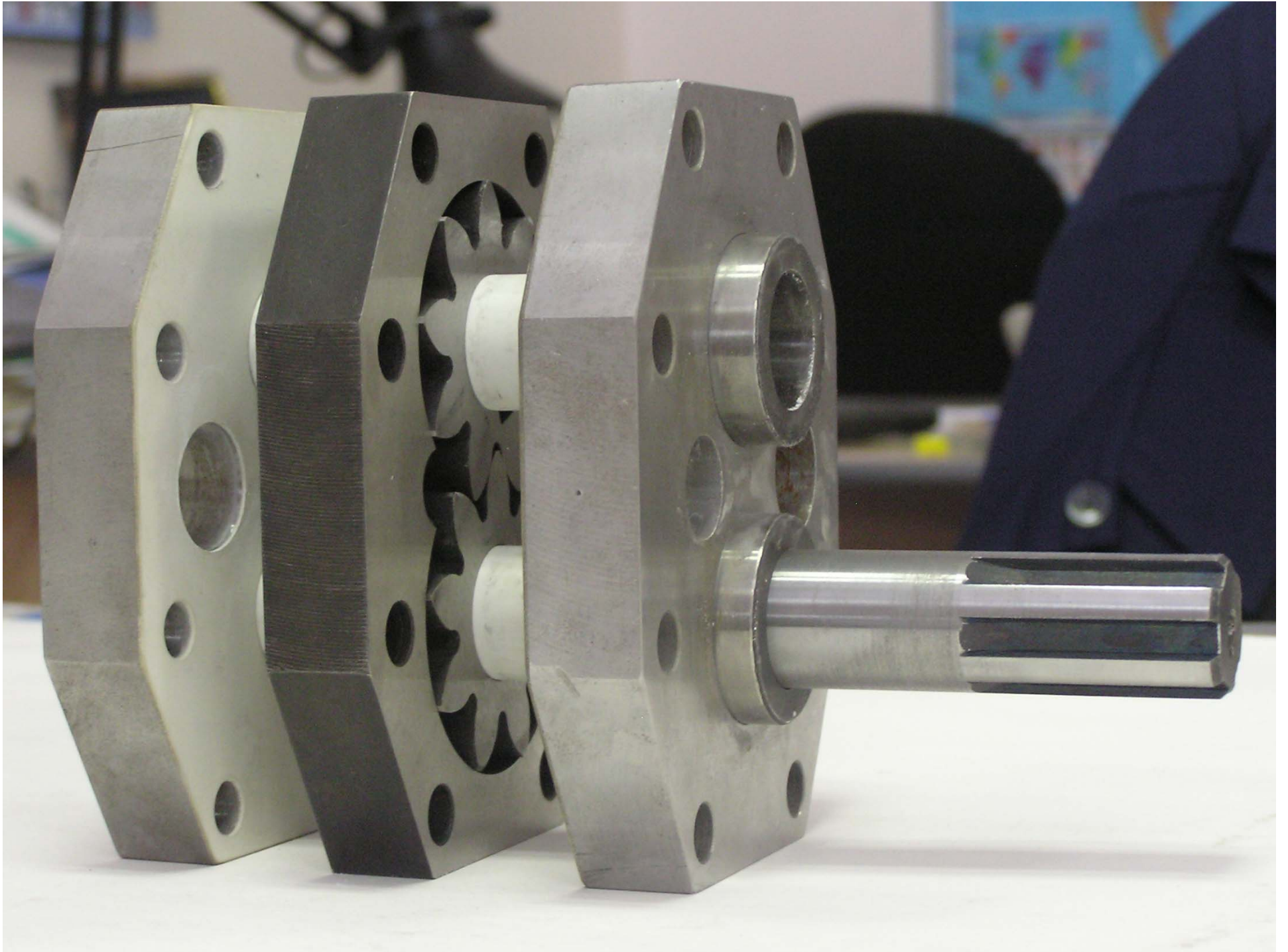
- Mechanical efficiency

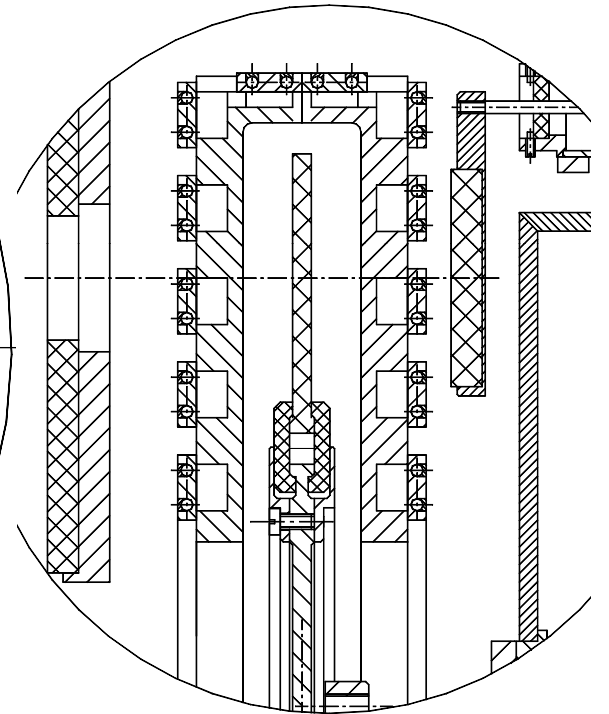
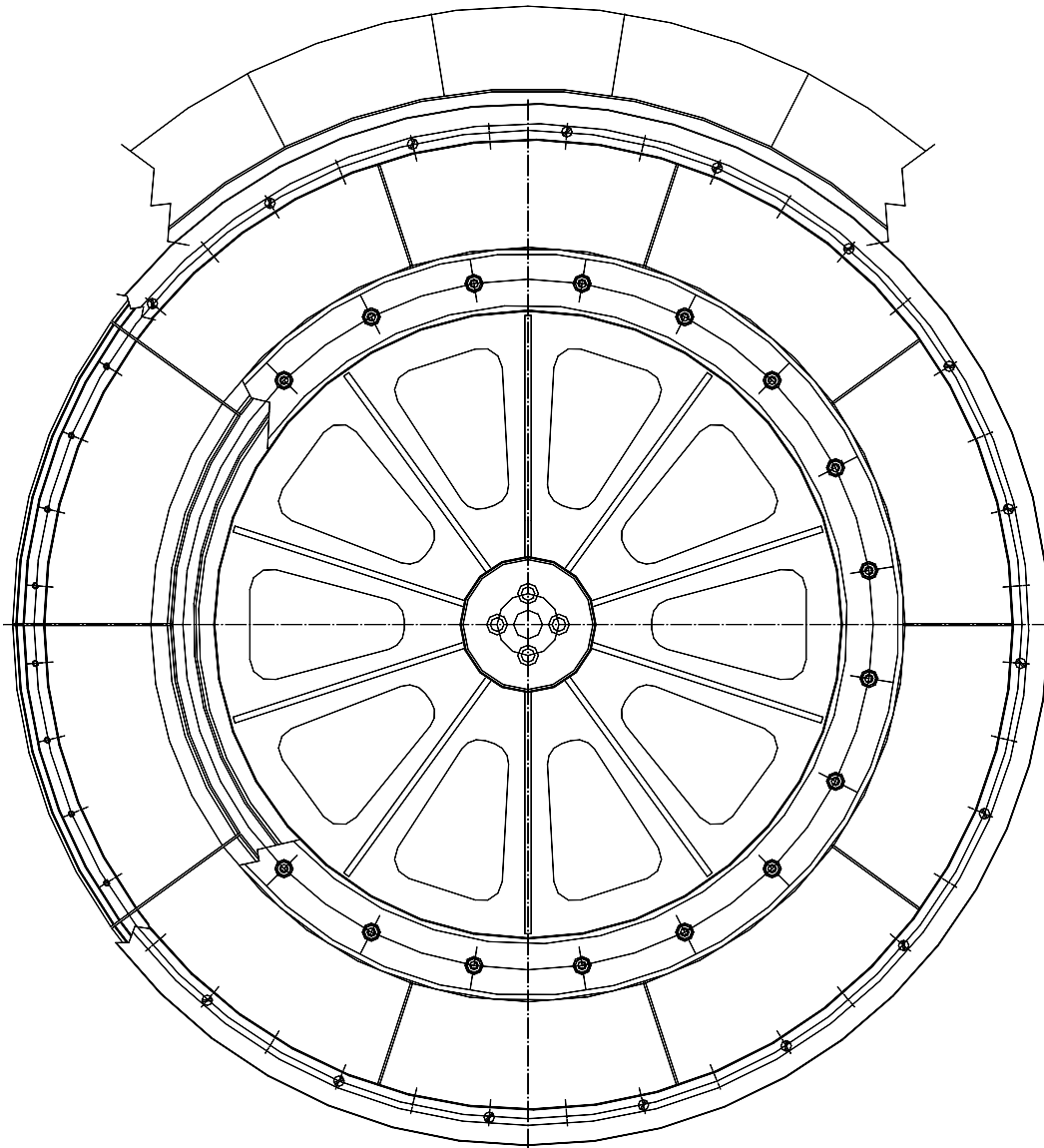
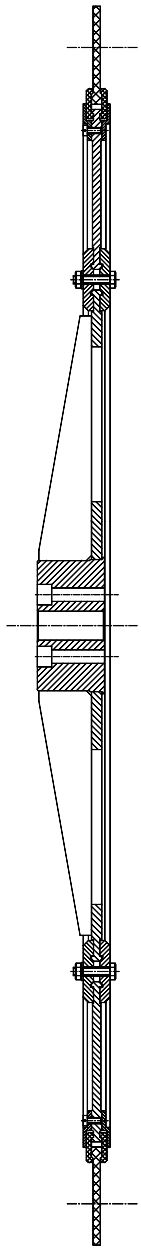
(liquid friction + dry friction) $\eta_m = 0.8$

- Volume efficiency (clearance leakage)

$$\eta_v = 0.9$$







Heat exchanger

density $\rho = 1 \text{ g/cm}^3$

kinematic viscosity $\nu = 6.59 \cdot 10^{-7}$

m^2/s

thermo conductivity $\lambda = 0.63$

$\text{W/m}\cdot\text{K}$

thermal capacity $C = 4200 \text{ J/kg}\cdot\text{K}$

heat power $P = 50 \text{ kW}$

Prandtl number 4.39

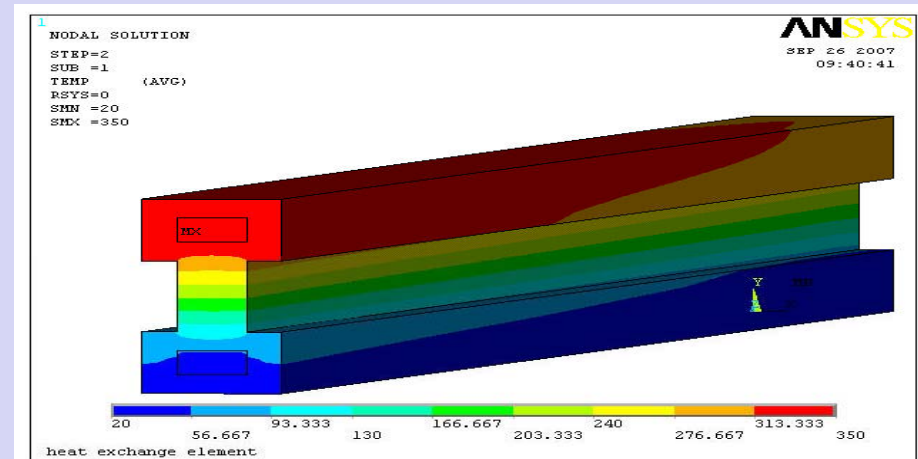
Nusselt number

$$Nu = \frac{\alpha \cdot d_g}{\lambda} = 0.023 Pr^{0.4} Re^{0.8}$$

8 parallel channels

length 1 m

cross section $1 \times 0.5 \text{ cm}^2$

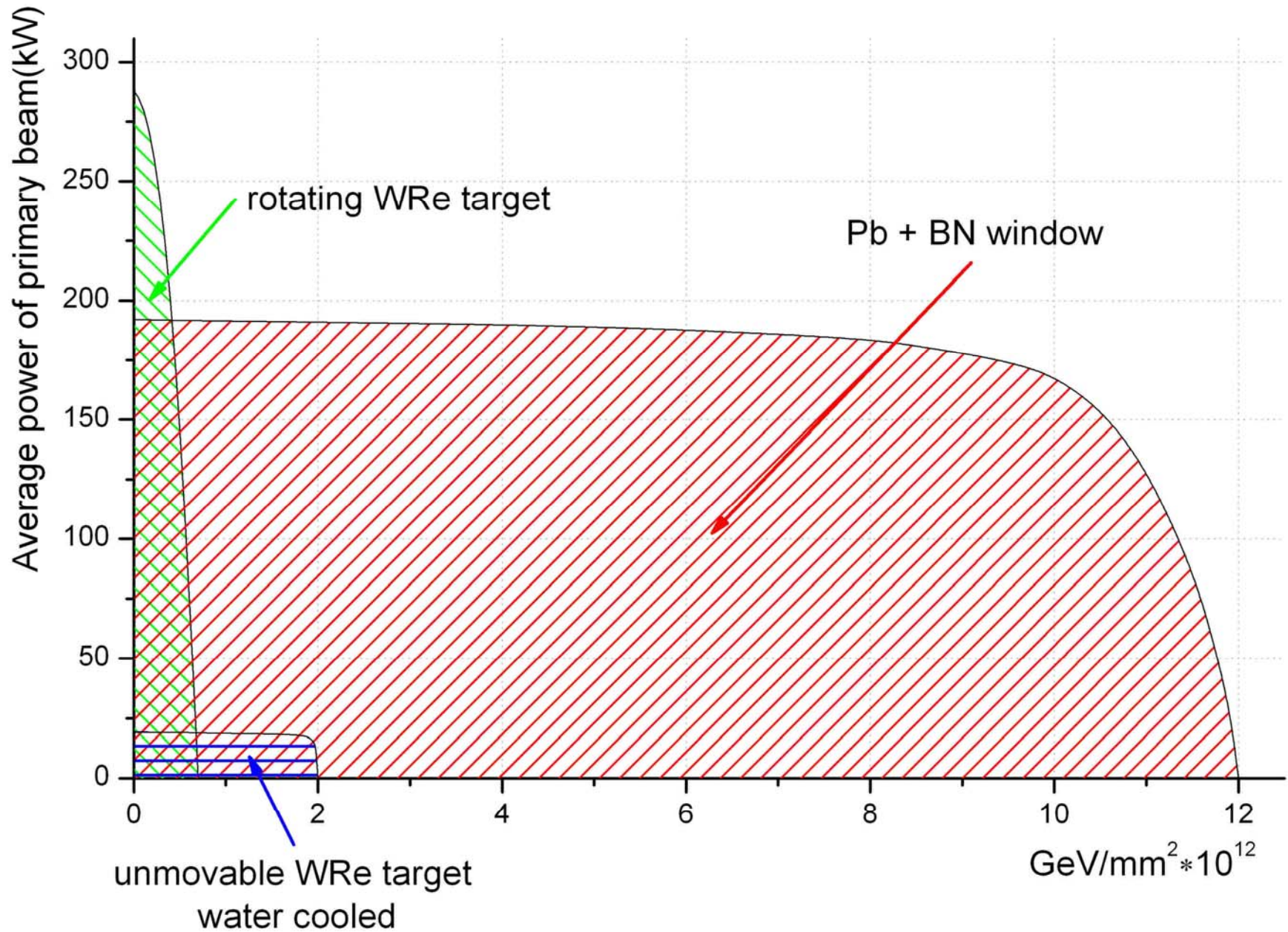


Minimum
acceptable value

$$Re_{\min} = \left(\frac{Nu_{\min}}{\lambda \cdot 0.023 Pr^{0.4}} \right)^{1.25} = \left(\frac{P}{S_c \Delta T_{\max}} \cdot \frac{d_g}{\lambda \cdot 0.023 Pr^{0.4}} \right)^{1.25} = 1.9 \cdot 10^4$$

Minimum acceptable flow
velocity

$$V_{\min} = Re_{\min} \frac{V}{d_g} = 0.4 \text{ m/s}$$





The present stage of BINP activity in Matching Device development.

- The successful test of VEPP-5 positron production system was performed. Flux Concentrator magnet (FC) was tested up to 70 kG (30 μ s pulse duration) without saturation in positron yield.
- The investigation of the technical limit for maximum FC pulse duration is in progress.
- Flat face FC for 30 μ s pulse duration, 10 T maximum field and good field quality for KEKB is under the tests now at BINP.

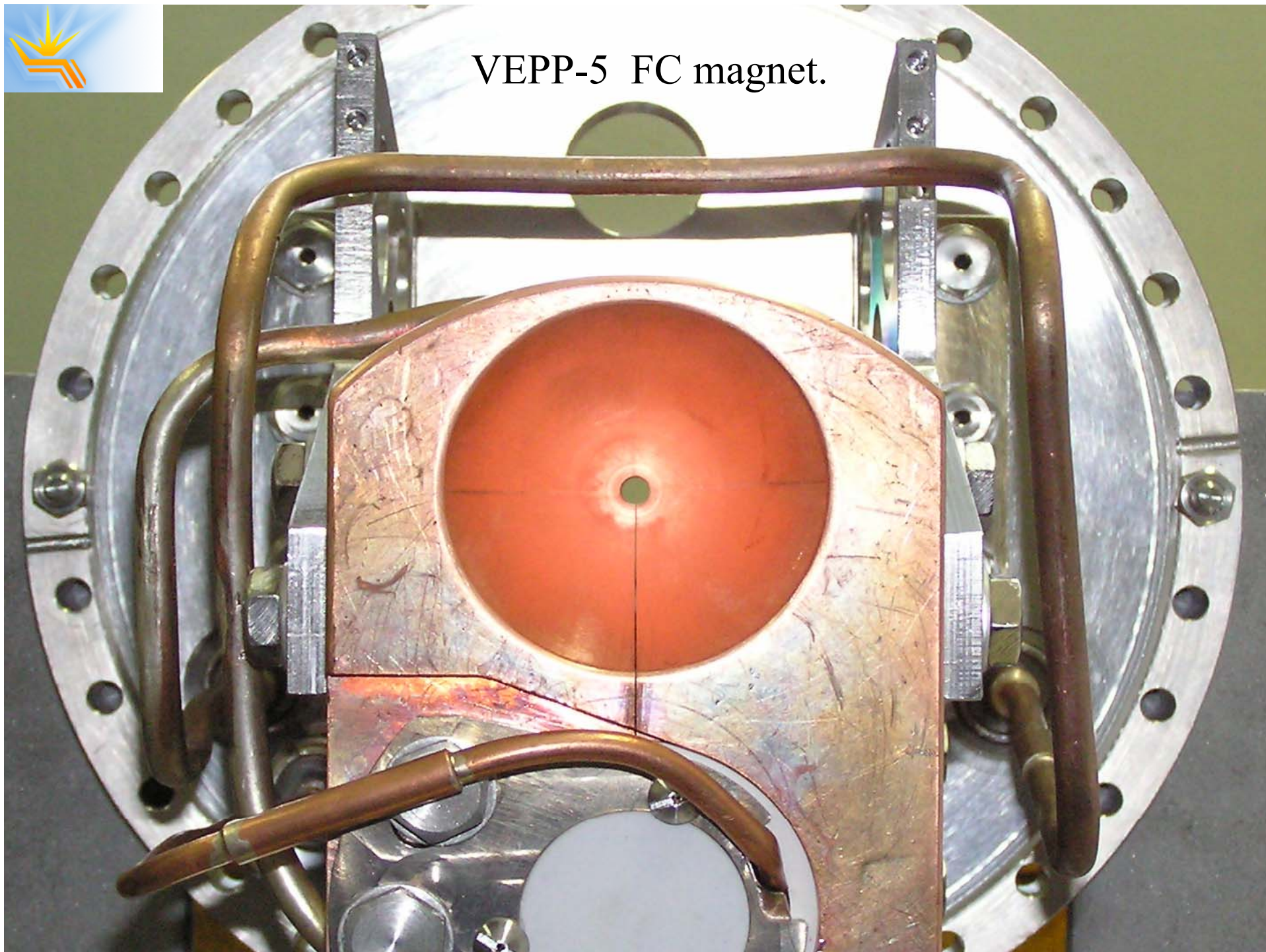


Positron system of VEPP-5 Injection complex in BINP.

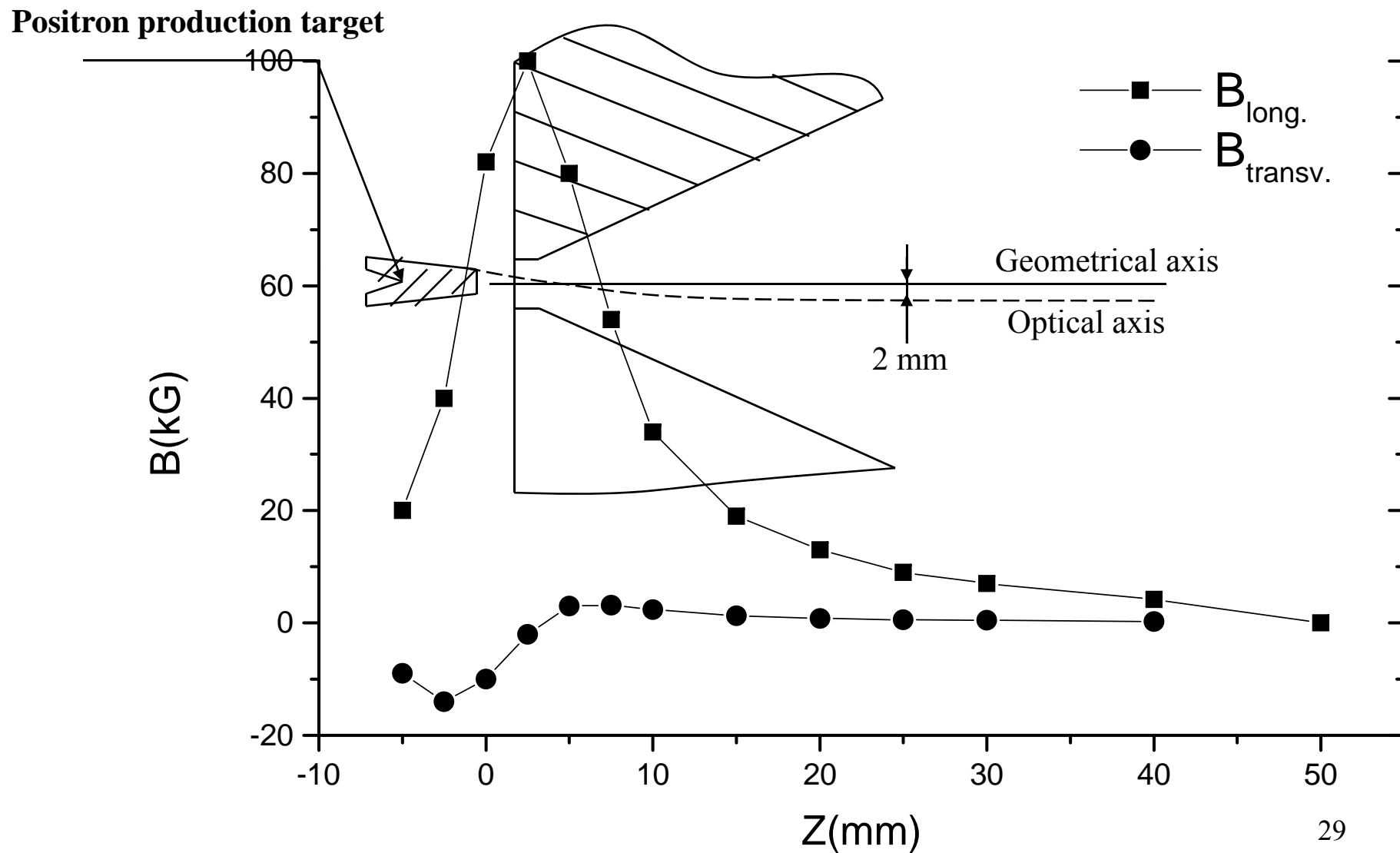


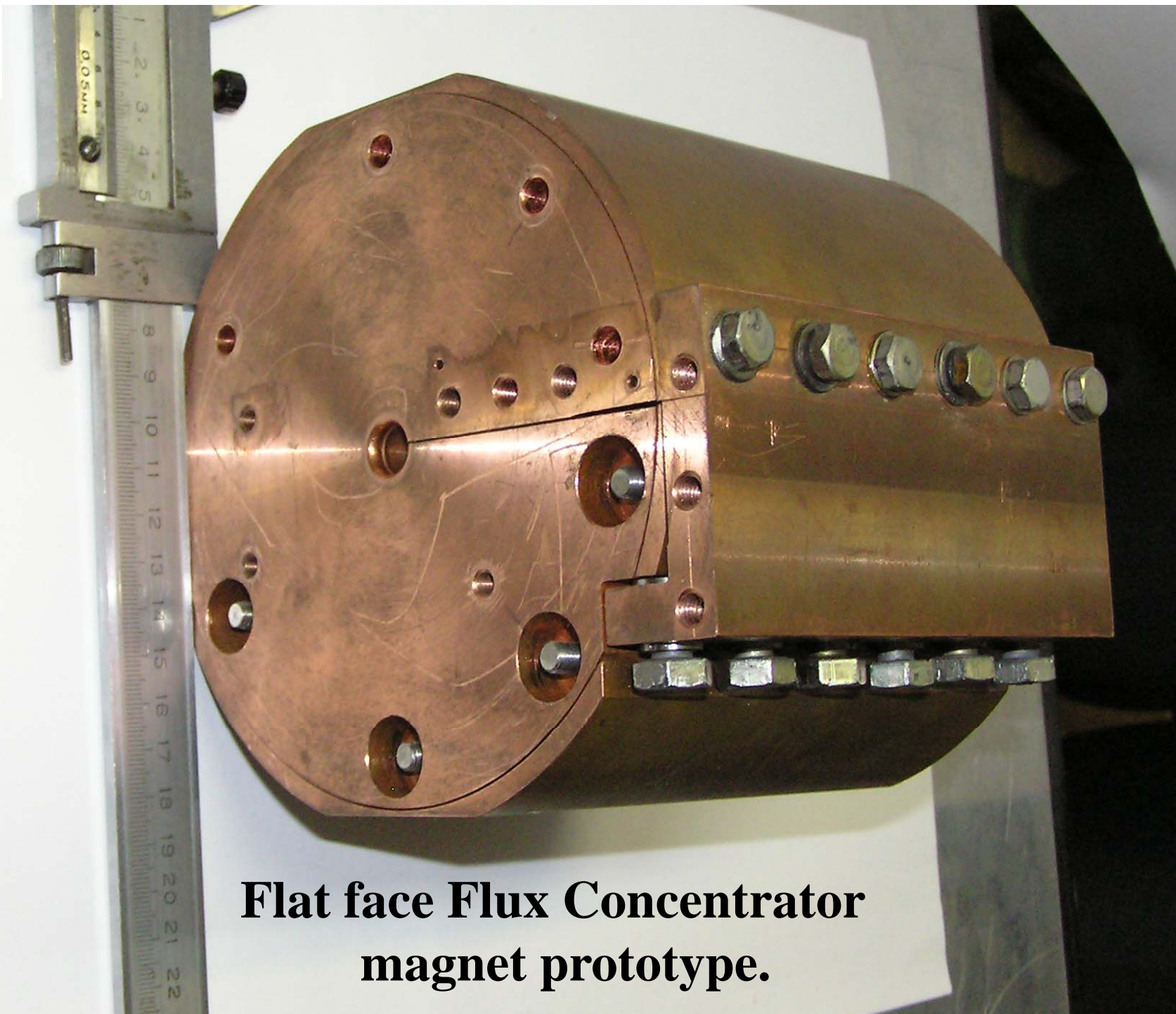


VEPP-5 FC magnet.



The dependencies of longitudinal and transverse magnetic fields on the geometrical axis of VEPP-5 FC magnet (measurements).

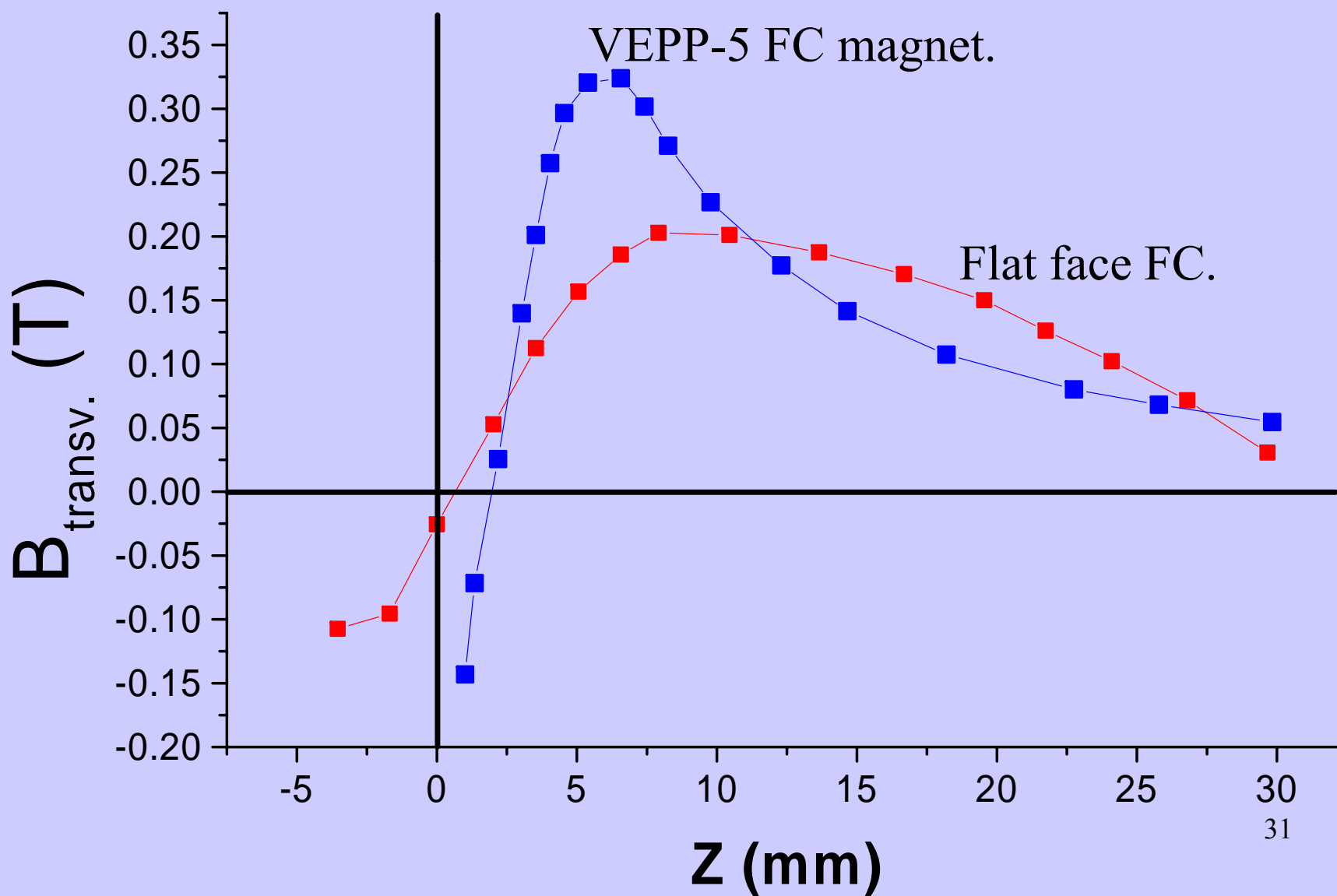




**Flat face Flux Concentrator
magnet prototype.**



The dependencies of transverse magnetic field in matching devices upon the coordinate along the axis (magnetic measurements).



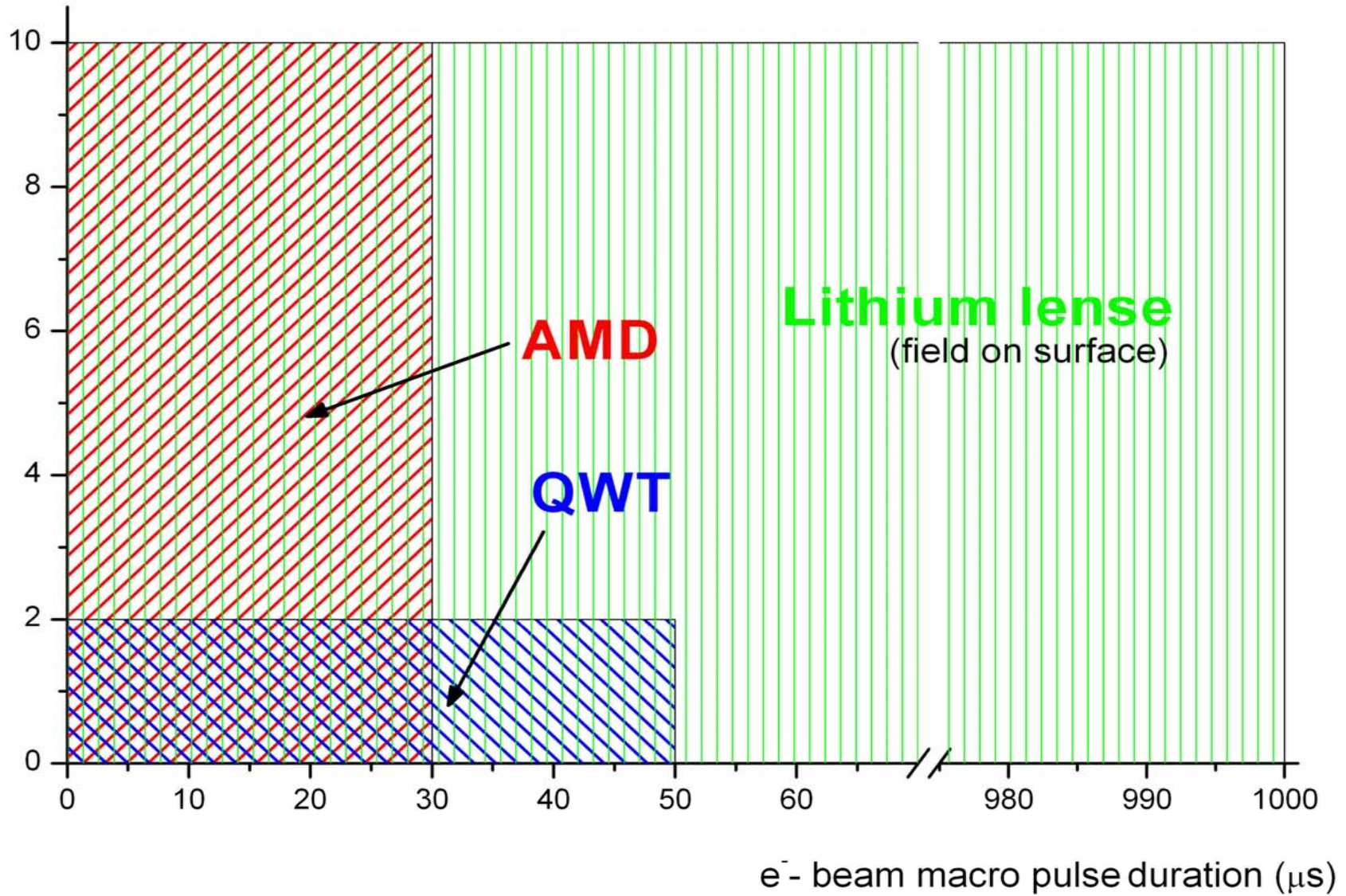


Problems with long macro pulse in ILC

- The skin-depth increasing leads to effective increasing of the device aperture and a region size with asymmetric transverse magnetic field. The longitudinal integral of this field determines the kick effect.
- For longer pulse – more problems with the field quality.
- For longer pulse – the energetic efficiency of all the system is less.
- Also the mechanical problems arise with the increasing of the pulse length.
- The technical limit for pulse duration should be determined.



Max. magnetic field (T)





Summary

- Existing positron sources, which are in operation, haven't reached yet the limits of their application areas.
- Significant improvements in some directions may lead to about one order of magnitude increase in positron production rate for best existing installations.
- Conventional positron production technology still has some reserves for such up-to-date projects as International Linear Collider (ILC) or Super B-factory.