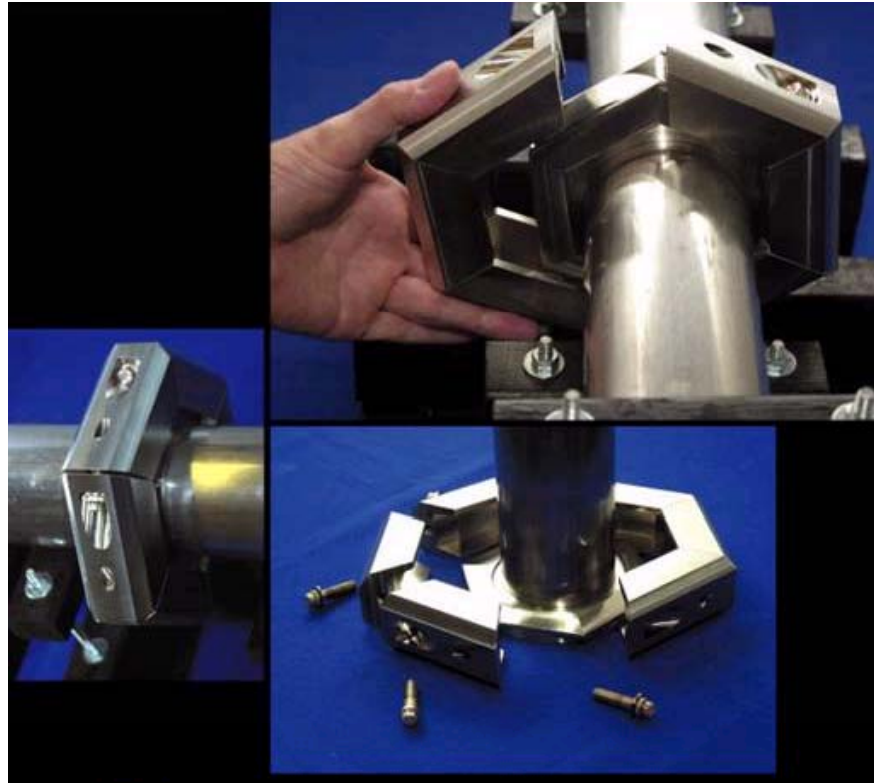


# Flange sealing improvements

- Radial wedge clamp
  - Low profile for beamline flanges



## Radial Wedge Flange Clamp

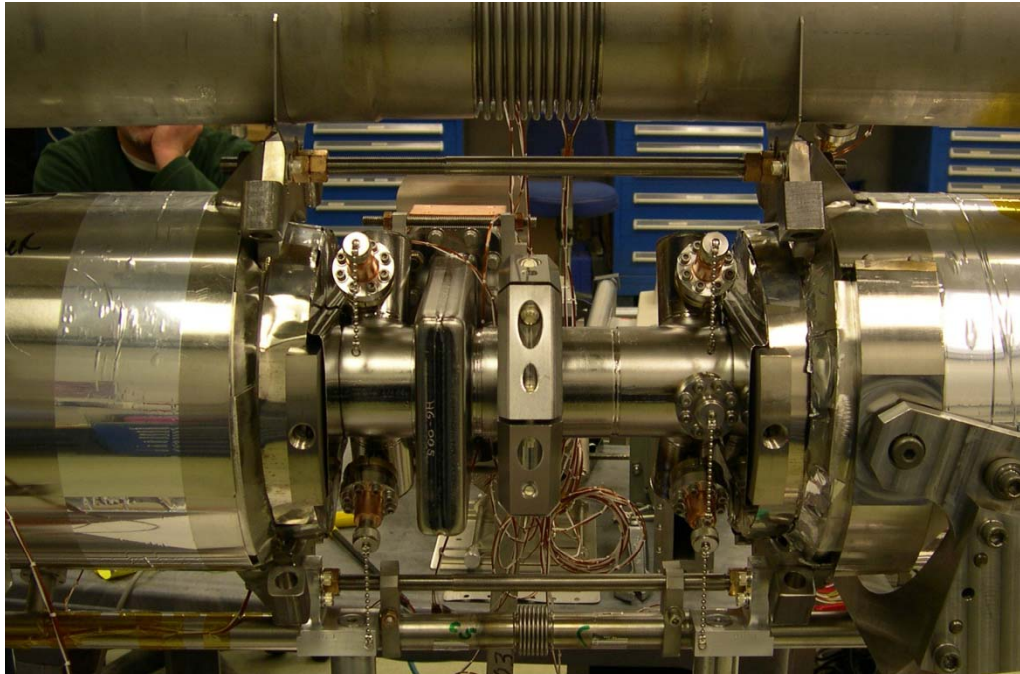
### Applications

The *Radial Wedge Flange Clamp* is an innovative new device for making quick and reliable, tangentially bolted connections and disconnections of metal seal flanges. It is intended for use in tight places where axial installation and wrenching of bolts is undesirable or impossible. Practical applications include:

- ultra high vacuum
- cryogenics
- aerospace
- shipbuilding
- food industry
- pharmaceuticals
- chemicals & petroleum
- academic & industrial research

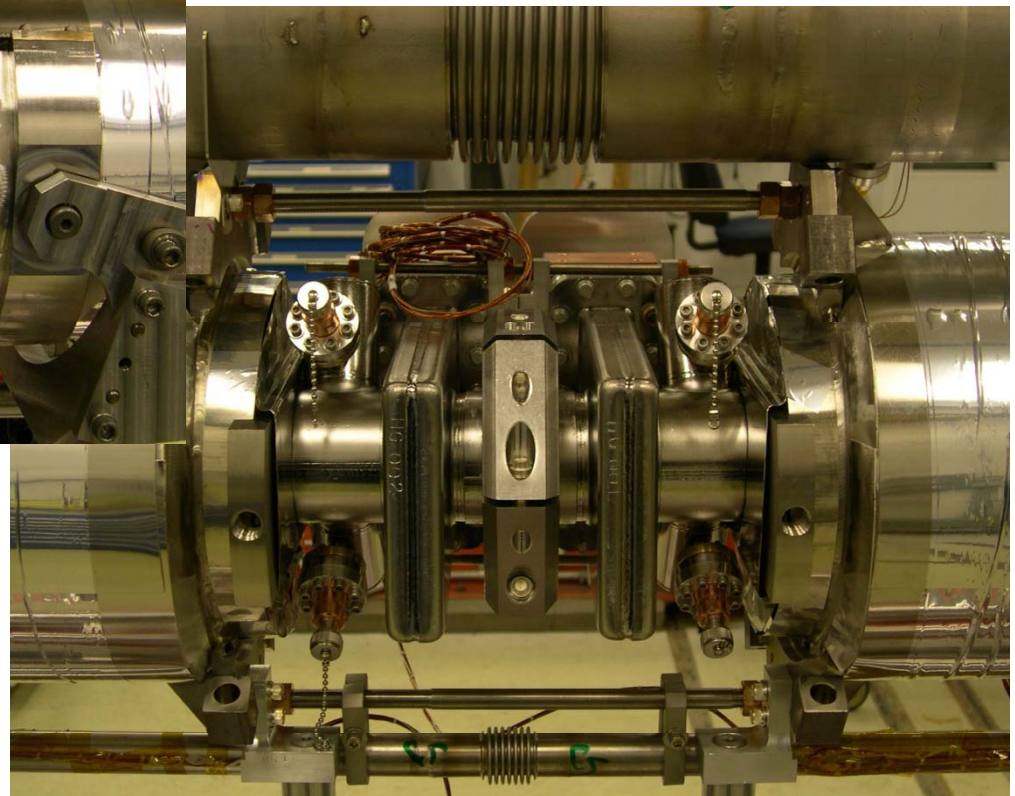
# Cryomodule Assembly

---



Interface between cavities

Beamline mid-point



# Radial Wedge Flange Clamp

