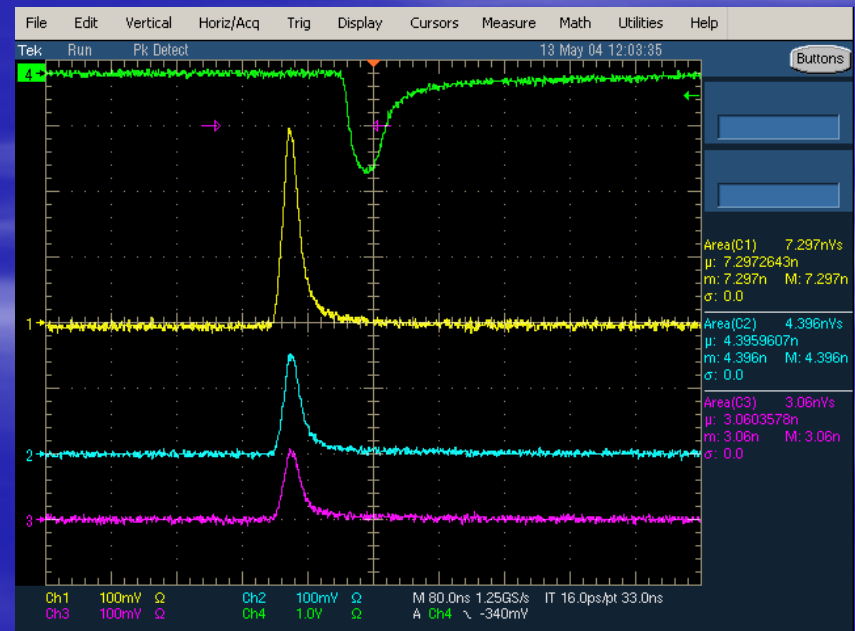
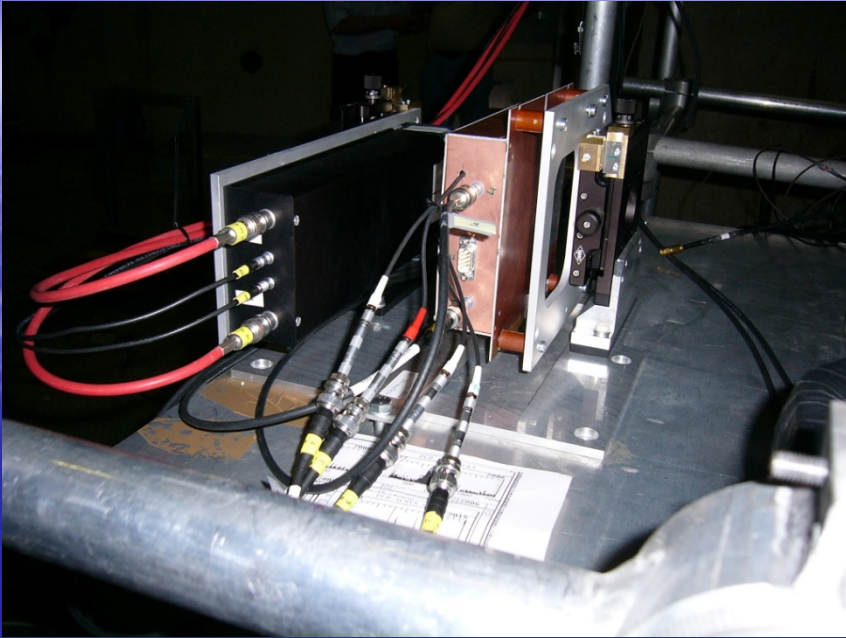


Beam Halo Monitor for FLASH

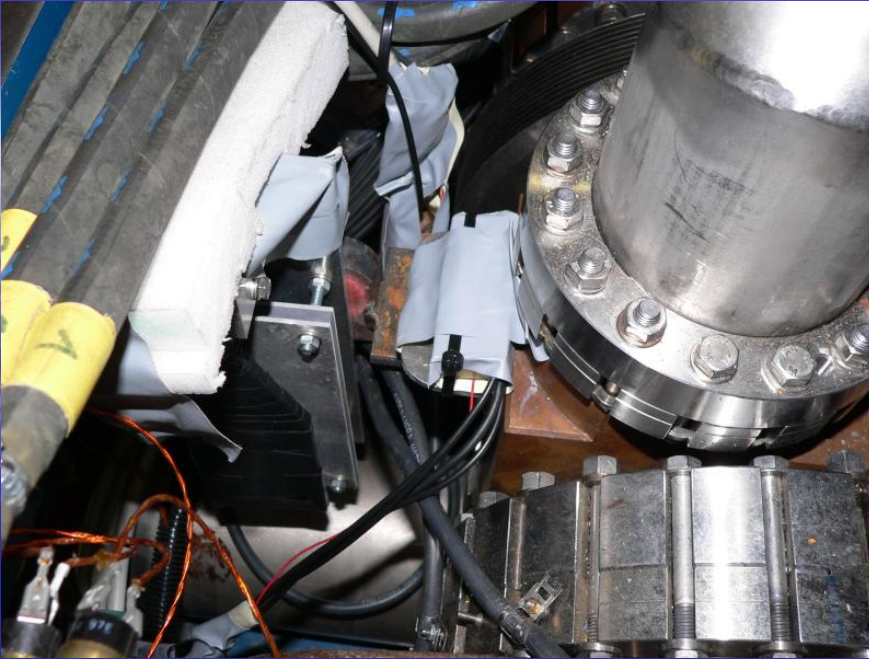
Alexandr Ignatenko

January 16, 2009

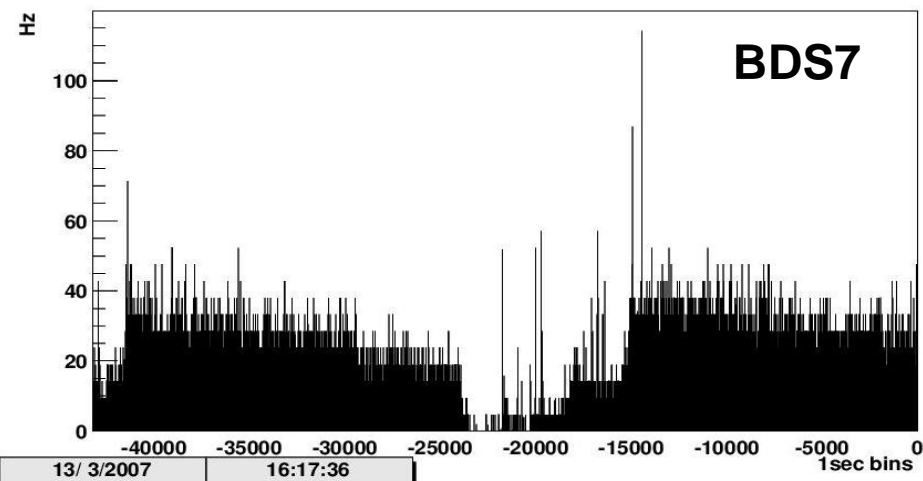
diamond sensor in hadron beam at CERN



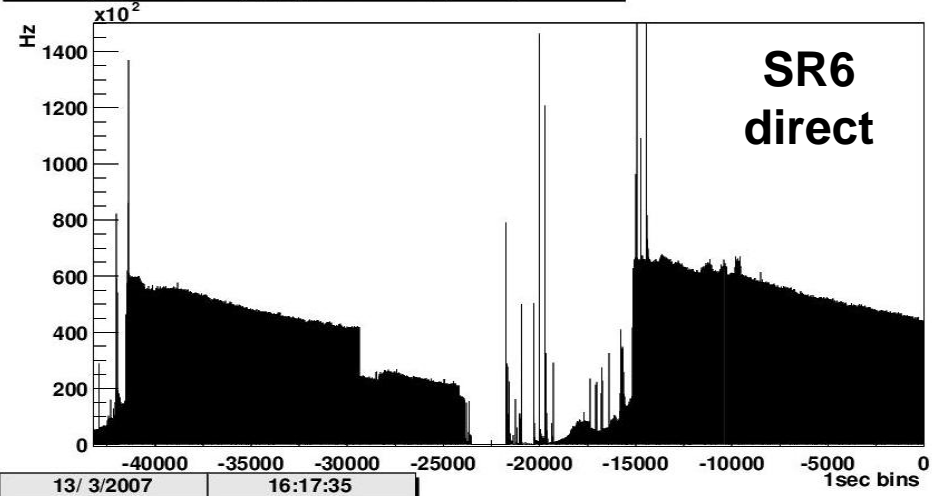
**diamond sensor as beam
condition monitor at ZEUS**



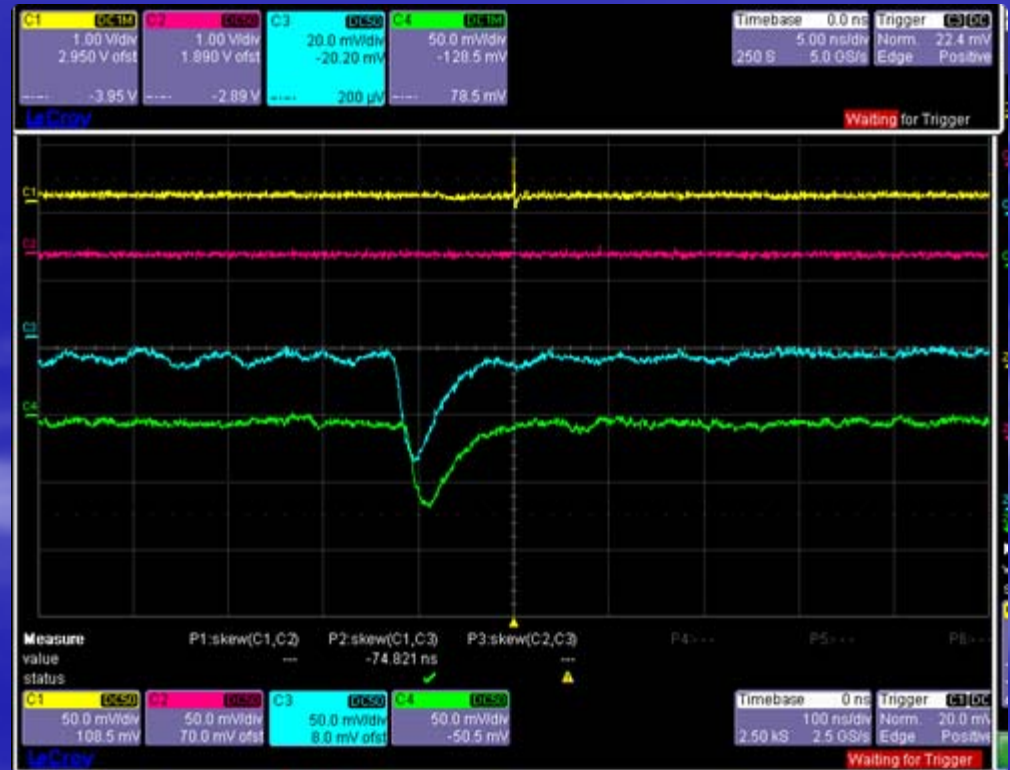
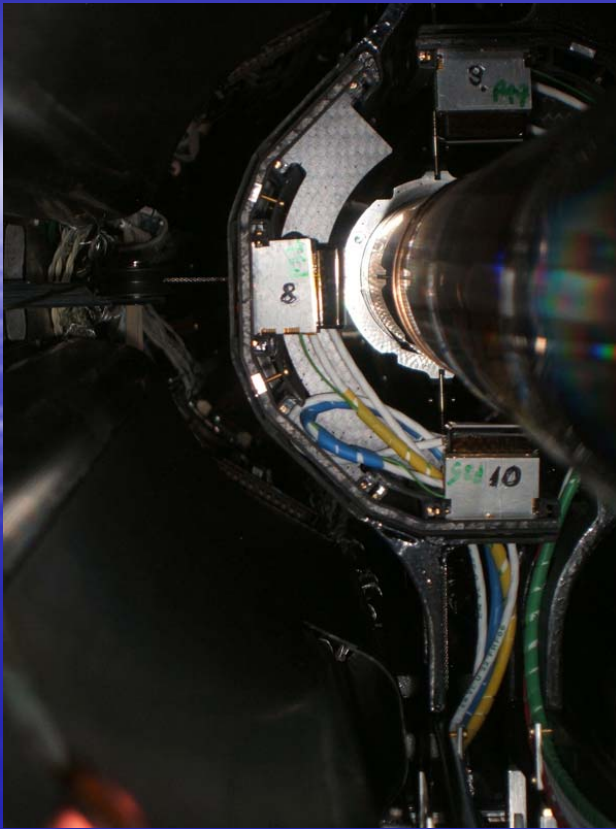
/c5sys_histos/c5sys_bgrate//44:rate_14_12h



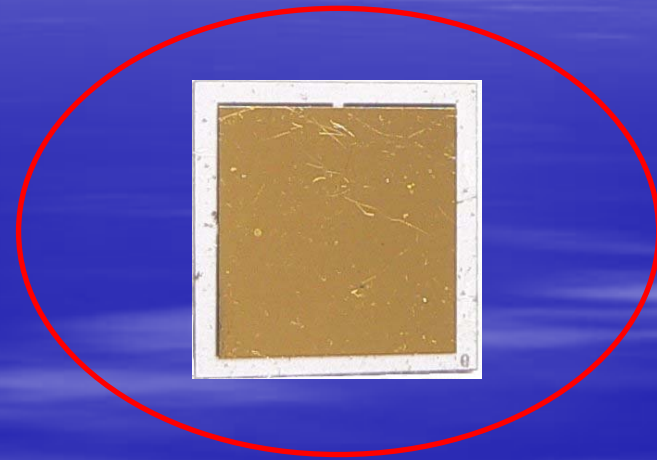
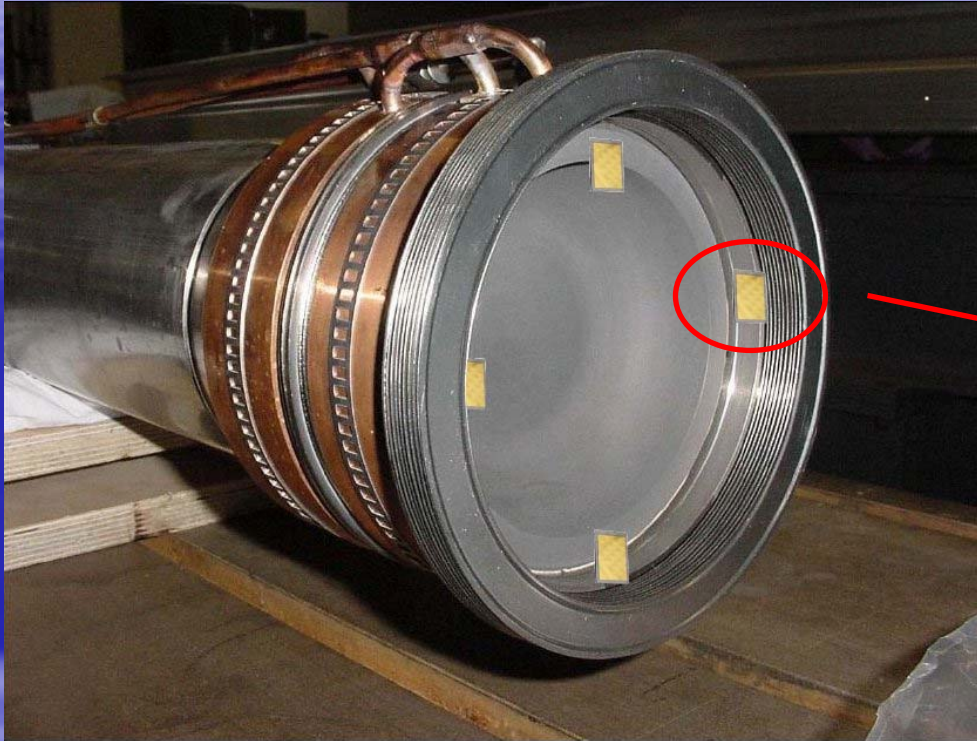
/c5sys_histos/c5sys_bgrate//14:SR6_direct_12h



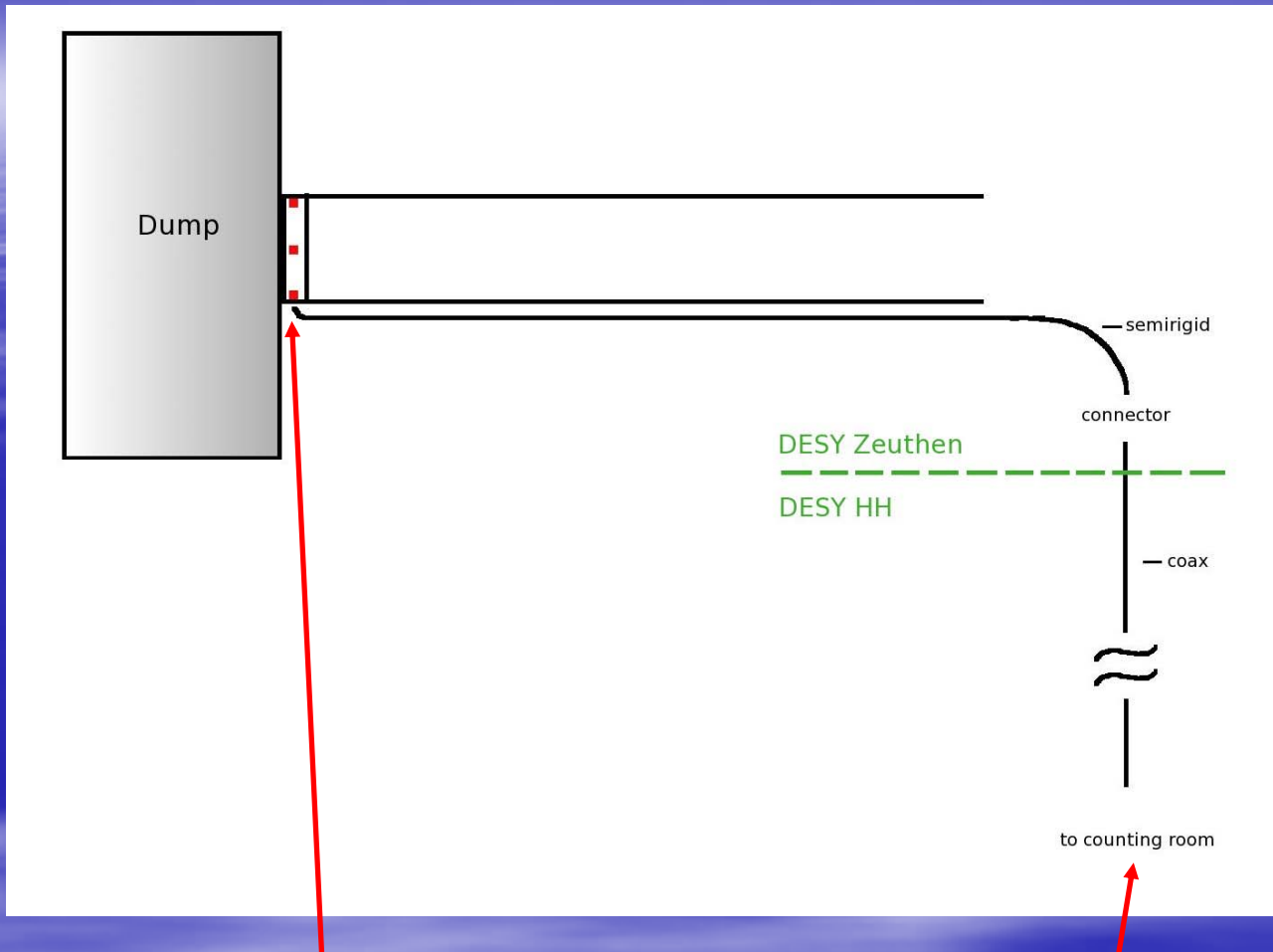
diamond sensors in BCM1 system (CMS)



**Plans for beam halo
monitor at FLASH**



**Element 6
pCVD diamond
400 – 500 μm
2(3)-layer metallization**



sensors

**bias voltage source,
read-out electronics**

Important things to discuss:

- 1. Reliable contact to the sensors**
- 2. Route cables inside the bellow**
- 3. Radiation hard support with fixture for the sensors**