

Planning 2009

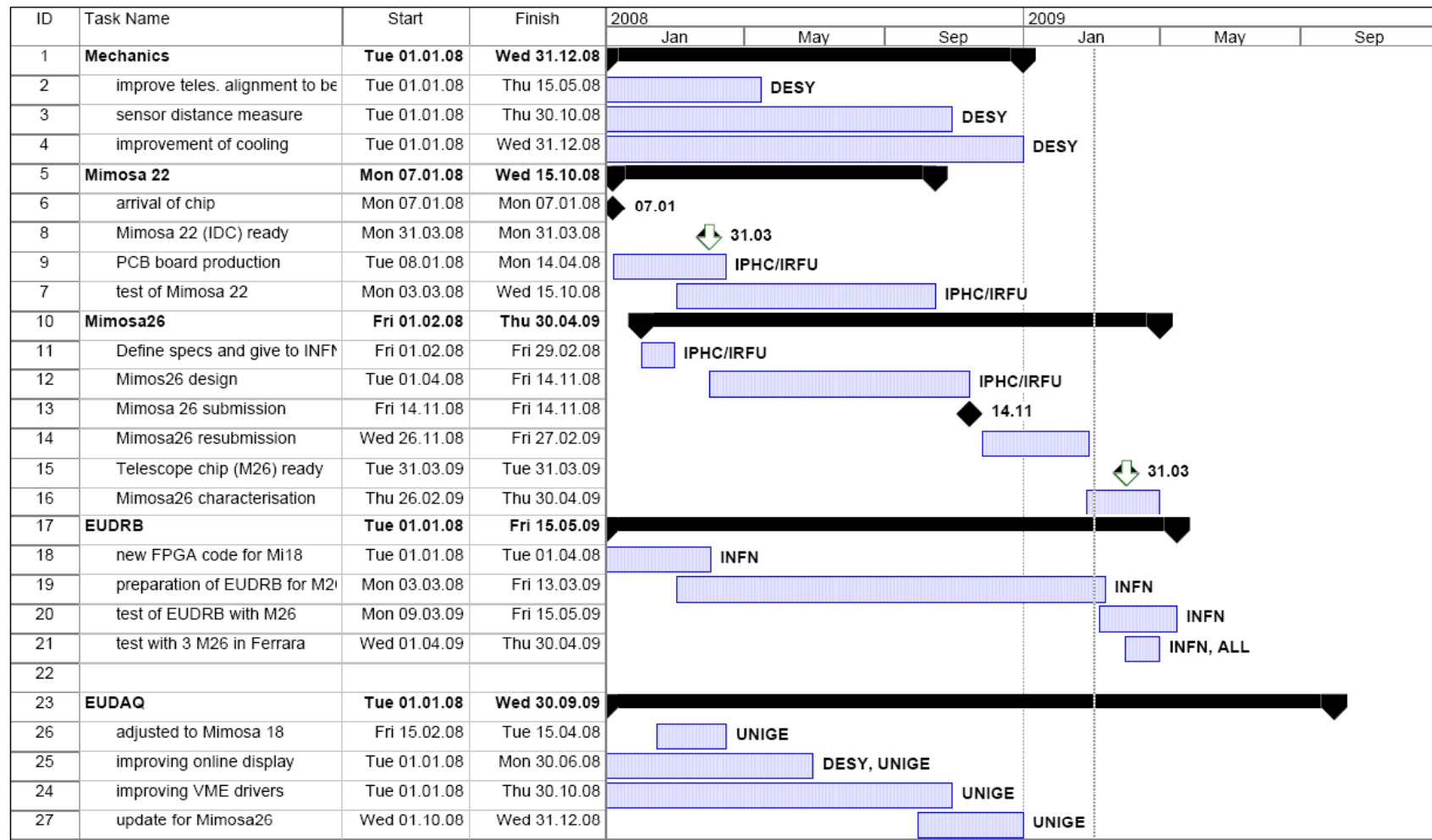


Ingrid-Maria Gregor
DESY

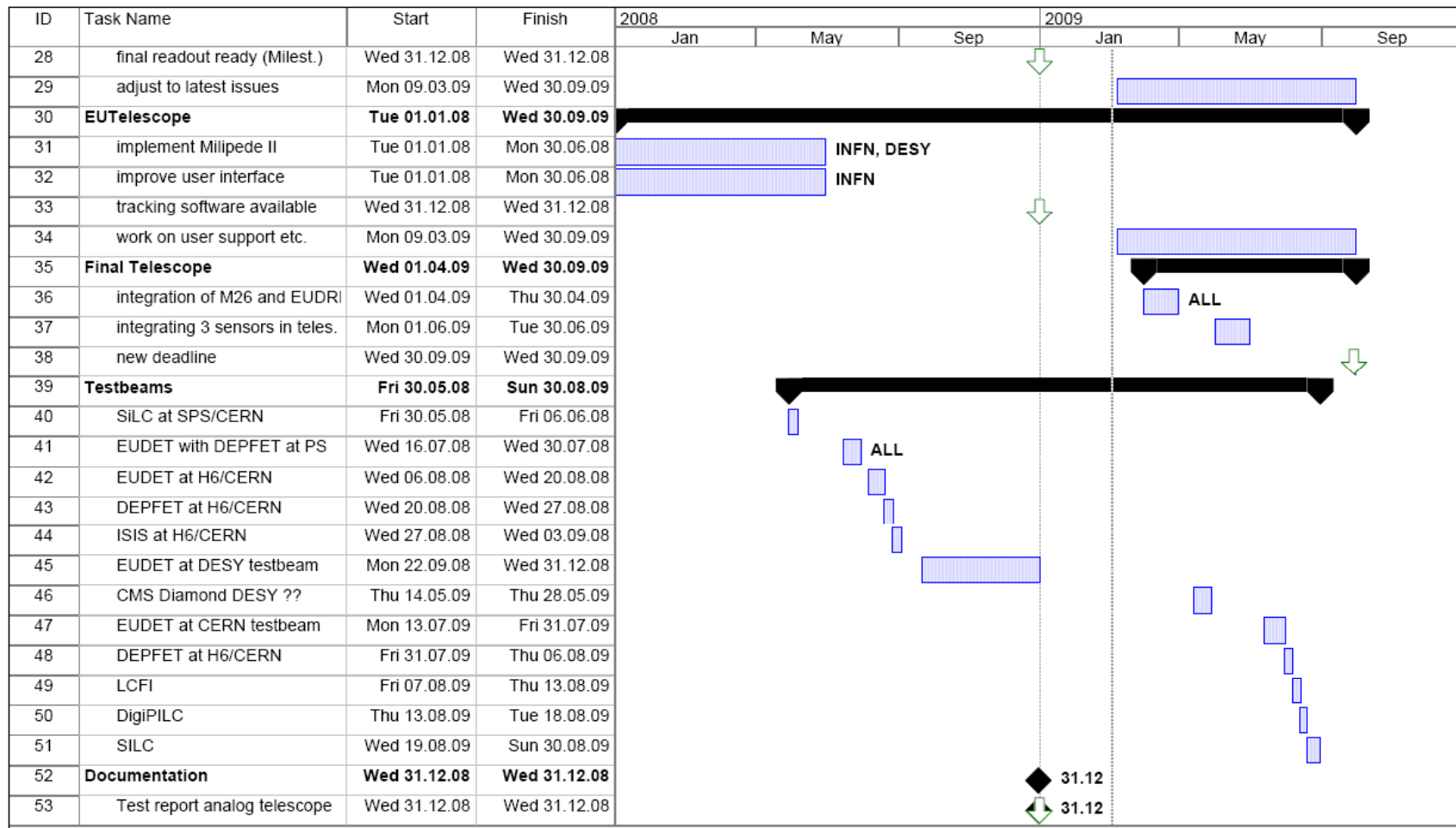
JRA1 Meeting, Strasbourg March 4th 2009



Planning 2009



Planning 2009



Detailed Planning (to be discussed)

- ❑ Mimosas26
 - ❑ testing: first characterisation until end of April
 - ❑ Available for EUDET: one chip right away, three April 6th
 - ❑ JRA1 Milestone: „chip available“ end of March can be fulfilled

- ❑ EUDET/DAQ
 - ❑ Start tests with chip asap
 - ❑ Test with 3 sensors in April (Ferrara) -> Geneva group will go there

- ❑ Towards Full Telescope
 - ❑ Move Demonstrator to CERN around June
 - ❑ Get it ready for data taking
 - ❑ Put 3 Mimosas26 in MaserBoxTelescope and put into DUT slot
 - ❑ Run 3 Mimosas26 and eventually together with 3 MimosTel/Mimosas18
 - ❑ Have Demonstrator ready for users mid July
 - ❑ Upgrade to full Mimosas26 system after user business (at DESY??)

SPS Schedule

SPS Operation

Period 3 2009 Jul 9 to Aug 13

Schedule issue date: 27-Feb-2009

Version 1.0

(colour code: purple (dark) = scheduling meeting , light green (light) = weekend or holiday)

		Thu 9 Jul	Fri 10 Jul	Sat 11 Jul	Sun 12 Jul	Mon 13 Jul	Tue 14 Jul	Wed 15 Jul	Thu 16 Jul	Fri 17 Jul	Sat 18 Jul	Sun 19 Jul	Mon 20 Jul	Tue 21 Jul	Wed 22 Jul	Thu 23 Jul	Fri 24 Jul	Sat 25 Jul	Sun 26 Jul	Mon 27 Jul	Tue 28 Jul	Wed 29 Jul	Thu 30 Jul	Fri 31 Jul	Sat 1 Aug	Sun 2 Aug	Mon 3 Aug	Tue 4 Aug	Wed 5 Aug	Thu 6 Aug	Fri 7 Aug	Sat 8 Aug	Sun 9 Aug	Mon 10 Aug	Tue 11 Aug	Wed 12 Aug	Thu 13 Aug		
Machine		8 BIG MD																8 BIG MD																					
NORTH AREA	T2 -H2	8h CMS-HCAL								8h NA61																													
	T2 -H4	8h CMS-ECAL				8h DREAM								8h CALICE-RPC				8h COMPASS-CALO																					
	T4 -H6	8h ATLAS-MMEGAS				8h EUDET								8h DEPFET				8h LCFI																					
	T4 -H8	8h ATLAS-STRAW								8h TOTEM				8h UA9								8h ATLAS-RP																	
	T4 -P0	8h NA62																																					
	T6 -M2	8h COMPASS																																					
	-CNGS																																						
For further information contact the SPS/PS-Coordinator																																							

SPS Schedule

SPS Operation

Period 4 2009 Aug 13 to Sep 17

Schedule issue date: 27-Feb-2009

Version 1.0

(colour code: purple (dark) = scheduling meeting , light green (light) = weekend or holiday)

		Thu 13 Aug	Fri 14 Aug	Sat 15 Aug	Sun 16 Aug	Mon 17 Aug	Tue 18 Aug	Wed 19 Aug	Thu 20 Aug	Fri 21 Aug	Sat 22 Aug	Sun 23 Aug	Mon 24 Aug	Tue 25 Aug	Wed 26 Aug	Thu 27 Aug	Fri 28 Aug	Sat 29 Aug	Sun 30 Aug	Mon 31 Aug	Tue 1 Sep	Wed 2 Sep	Thu 3 Sep	Fri 4 Sep	Sat 5 Sep	Sun 6 Sep	Mon 7 Sep	Tue 8 Sep	Wed 9 Sep	Thu 10 Sep	Fri 11 Sep	Sat 12 Sep	Sun 13 Sep	Mon 14 Sep	Tue 15 Sep	Wed 16 Sep	Thu 17 Sep		
Machine		BIG MD																				BIG MD																	
NORTH AREA	T2 -H2	8h								NA61																													
	T2 -H4	8h COMPASS-CALO				8h CALET				8h INSURAD								8h CMS-ECAL																					
	T4 -H6	8h DigiMaps-PILC				8h SiLC								8h ATLAS-FP420				8h ATLAS-Diamonds				8h MediPix																	
	T4 -H8	8h ATLAS-RP-MDT-MPI								8h TOTEM				8h AMS																									
	T4 -P0																																						
	T6 -M2	8h								COMPASS																													
	-CNGS																																						
For further information contact the SPS/PS-Coordinator																																							

EUDET JRA1 Testbeam 2009

DESY

- ❑ 15. – 30 May: CMS Diamond (????)

CERN H6B

- ❑ July 17th - EUDET (2 weeks)
- ❑ July 31st - DEPFET (1 week)
- ❑ August 6th – ISIS (1 week)
- ❑ August 13th – PILC (6 days)
- ❑ August 20th – SILC (11 days)

“ ~ 7 weeks

- ❑ Parasitic running: Ivan Peric (EUDET term)
- ❑ DEPFET also parallel with EUDET
- ❑ ISIS parallel with PILC (???)
- ❑ MimoRoma ?? To de defined

Further discussion with:

- ATLAS straw tubes (so far through Julia)
- ATLAS planar pixel (Jens Wüstenfeld)
- 3D sensors (HG Moser)
-

DESY

- ❑ September: commissioning of final telescope !!! (really at DESY??)
- ❑ October: ATLAS Planar Pixel (???)

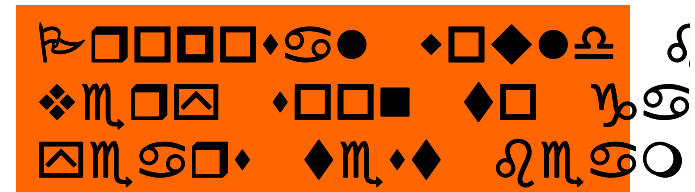
Two Telescopes ?

- ❑ Planned: „upgrade“ demonstrator to final telescope
 - ❑ Replace MimoTel by Mimosa26
 - ❑ Change EUDRBs to digital readout

- ❑ More and more requests for the telescope (always for use at CERN-SPS)
- ❑ Full Copy of Telescope costs ~100kEUR (without men power)

- ❑ Possible solution: we propose a telescope to CERN:
 - ❑ CERN pays the material and we do some of the work
 - ❑ CERN stuff joins JRA1 to help us keeping it running until 2010 while learning how to keep their copy running
 - ❑ Something like this ...

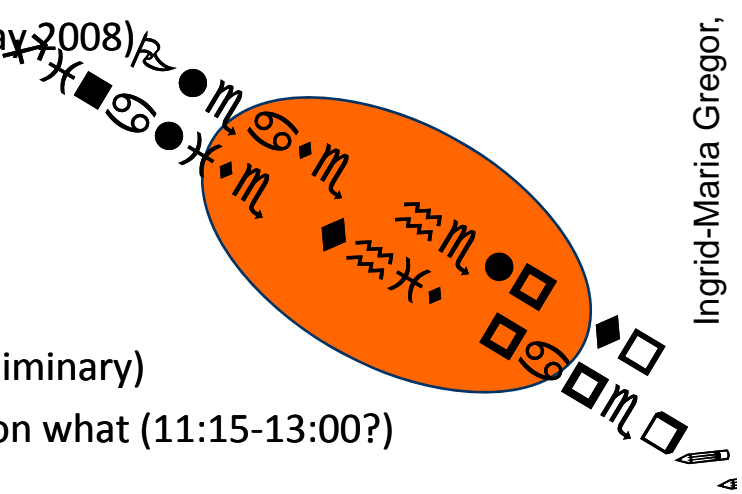
Item	Full Copy [kEUR]
Chips (Mimosa26)	20
Sensor Boards	5
Readout Boards	20
Mechanics (simple)	10
VME CPU	3
VME crate 64bit	5
XY table	15
Cooling	5
Power Supplies	5
TOTAL	88



Publication Of Analog Telescope Results

- ❑ Testbeam data should be published as soon as possible
- ❑ NIM-A seems to be the right journal (as discussed May 2008)
- ❑ What to do
 - ❑ Decide on outline of paper (done much earlier)
 - ❑ Draft paper (main editing: IMG -> draft very preliminary)
 - ❑ Paper meeting tomorrow to decide who works on what (11:15-13:00?)
 - ❑ Input to next version: April 15th 2009
 - ❑ Prepare draft 1 and circulate (JRA1) -> April 17th 2009
 - ❑ Paper ready to be submitted to EUDET SC -> April 30th 2009

 - ❑ Submit as report to EUDET ~May 15th 2009
 - ❑ Submit to NIM-A shortly after



Conferences 2009

- ❑ TIPP2009 March 11–17 2009, Tsukuba, Japan
 - ❑ Antonio Bulgheroni, The EUDET Telescope ...
 - ❑ Christine Huguo, Mimosa26
 - ❑ Ingrid-Maria Gregor, EUDET Overview Talk

- ❑ IEEE NPSS Real Time Conference 2009, May 10-15, 2009, Beijing, China
 - ❑ Daniel Haas, The DAQ for the EUDET Telescope

- ❑ 11th Pisa Meeting on Advanced Detectors, May 24 - 30, 2009, La Biodola, Isola d'Elba (Italy)

- ❑ 11th European Symposium on Semiconductor Detectors, June 7th - 11th, 2009 at Wildbad Kreuth, Germany

- ❑

- ❑ Please send a mail to Natalia Potylitsina-Kube if you give a EUDET related talk at any conference !! This makes life much easier when we write the annual report.