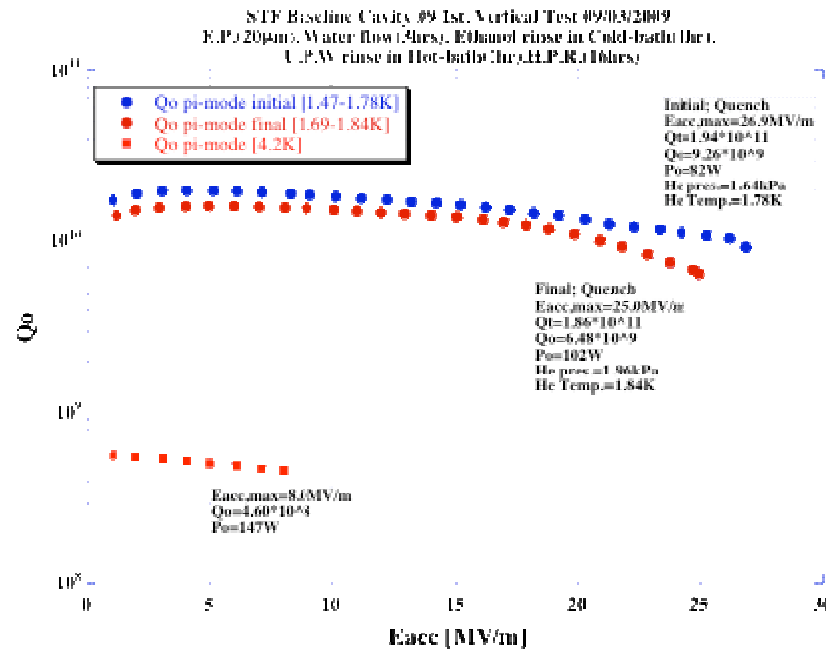


## Cavity status; recent KEK activities

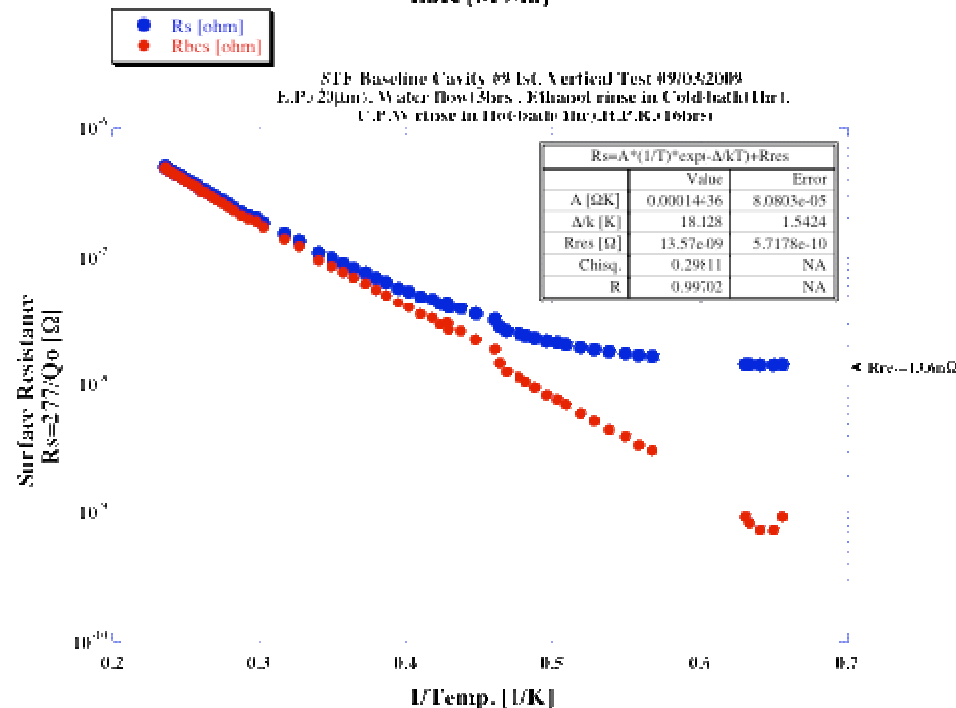
- (1) MHI-09 was vertical tested on Sep. 03.  
→ 25MV/m by field emission and quench.
  
- (2) MHI-08 and AES-003 cavities were under guided repair  
by KEK local grinding machine.

\*MHI-05,06,07,08,09 are S1G candidates.

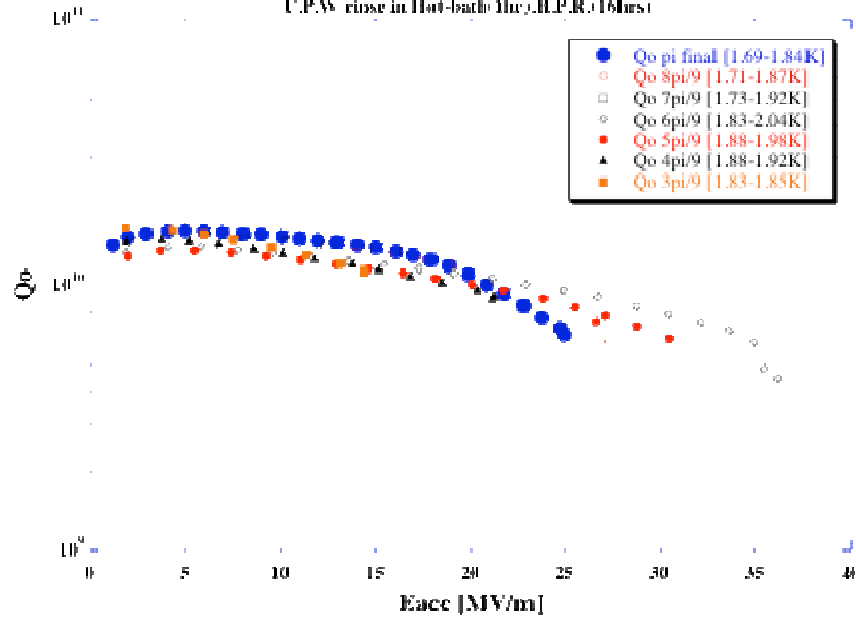


MHI-09 cavity : 1st VT  
(20 $\mu$ m EP + Ethanol(US) )

Final power rise Max: 25MV/m  
strong field emission



STC Baseline Cavity #9 Isc, Vertical Test 09/03/2009  
 E<sub>acc</sub> 200mV, Water flow 130mL, Filament: rinse in Cold-Isofil 1hr,  
 U.P.W. rinse in Hot-Isofil 1hr, H.P.R. 16hrs



	Cell 1 & 9 [MV/m]	Cell 2 & 8 [MV/m]	Cell 3 & 7 [MV/m]	Cell 4 & 6 [MV/m]	Cell 5 [MV/m]	Comment
a. Initial	26.87	26.87	26.87	26.87	26.87	On ench/Self pulse for 3cell Qo=9.26E9, Po=82W On ench/Self pulse Array 5900 Qo=6.48E9, Po=102W
Final	24.97	24.97	24.97	24.97	24.97	
8pi/9	27.71	24.66	18.29	10.25	0	On ench/Self pulse for 9cell Qo=8.00E9, Po=490W X-ray 0.9nS/cell
7pi/9	33.64	17.83	6.73	26.00	36.00	On ench/Self pulse for 9cell Qo=4.90E9, Po=129W X-ray 2.25nS/cell
6pi/9	>36.24	0	>36.24	>36.24	0	Power Limit Qo=4.45E9, Po=192W X-ray 1.25nS/cell
5pi/9	30.51	20.75	26.00	6.10	38.75	On ench/Self pulse for 3cell Qo=6.27E9, Po=122W X-ray 5.00nS/cell
4pi/9	21.32	27.93	12.15	30.93	0	On ench/Self pulse for 2cell Qo=8.94E9, Po=57W X-ray 1.7nS/cell
3pi/9	14.42	28.84	14.42	14.42	28.84	On ench/Self pulse for 2cell Qo=1.12E10, Po=35W X-ray 0.0nS/cell Acc. 34.90MV/m
Eacc,max	>36.24	28.84	>36.24	>36.24	38.75	

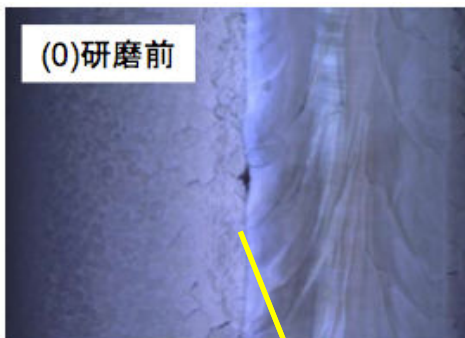
limited at #2cell



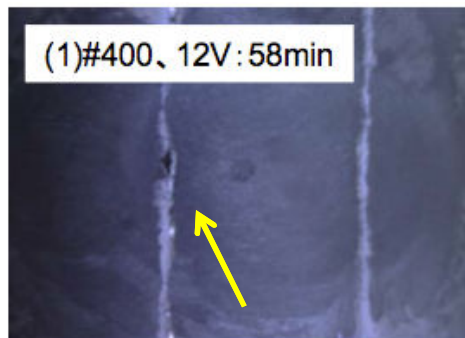
AES003 iris scratches are under local grinding.  
Three defects in equators will be done in the next.

MHI-08 #2 cell pit is under grinding.

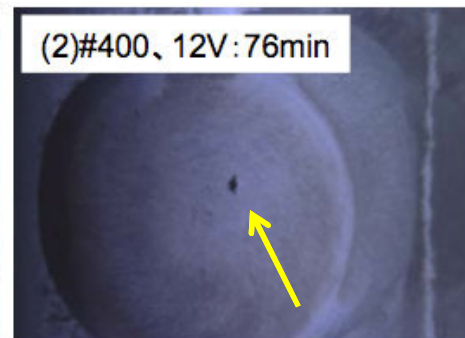
16MV/m quench at #2 cell equator



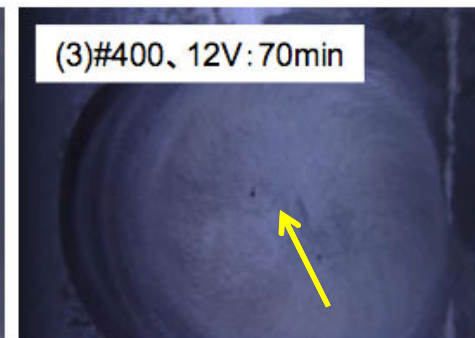
(0)研磨前



(1)#400、12V:58min



(2)#400、12V:76min



(3)#400、12V:70min

