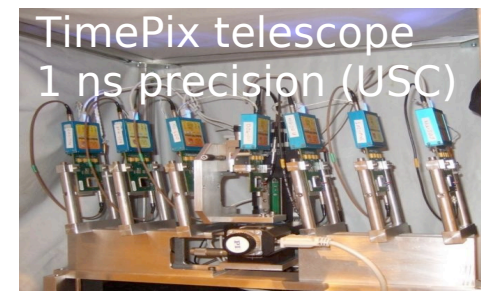
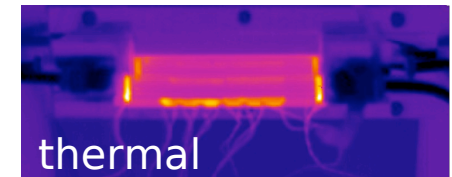


# AIDA - WP 9.3 PIXEL DETECTORS

- The main infrastructure is a beam telescope for characterization of prototypes
- Continuation of the EUDET telescope and surrounding infrastructure,
- Catering to sLHC needs (CO2 cooling plant, fast telescope arms)
- Infrastructure for thermo-mechanical characterization envisaged at DESY



## First ideas for next generation telescope

- Starting on the base of existing telescope
- User can choose from three different technologies:
  - ATLAS pix: LHC timing
  - Timepix: high precision timing and high resolution
  - Mimosas: large area (e.g. 4x4 cm<sup>2</sup>) and high resolution
- Segmented trigger: easier tracking
- New version of TLU: tagging

