

Towards Ecal Assembly



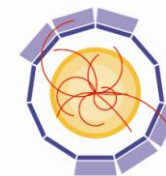
IN2P3
Institut national de **physique nucléaire**
et de **physique des particules**

Julien Bonis
bonis@lal.in2p3.fr



23 September 2010
Casablanca, Morocco

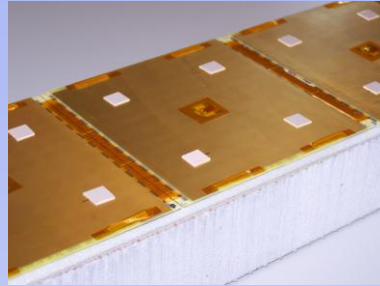
CALICE Collaboration Meeting
Hassan University HASSAN II



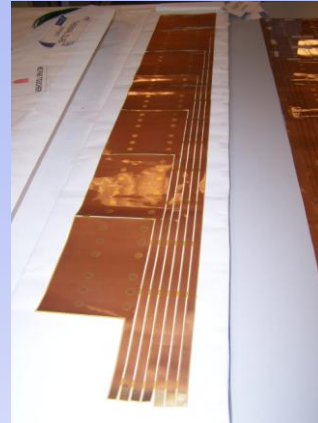
AIDA

Ecal assembly main steps

- ASU ensemble assembly



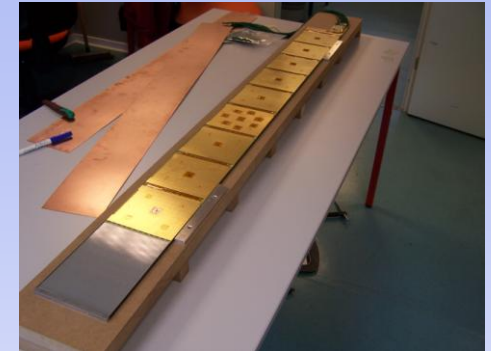
- Kapton HV gluing and Slab's elements stacking



- Slab locking



- Cosmic bench



- Modul integration

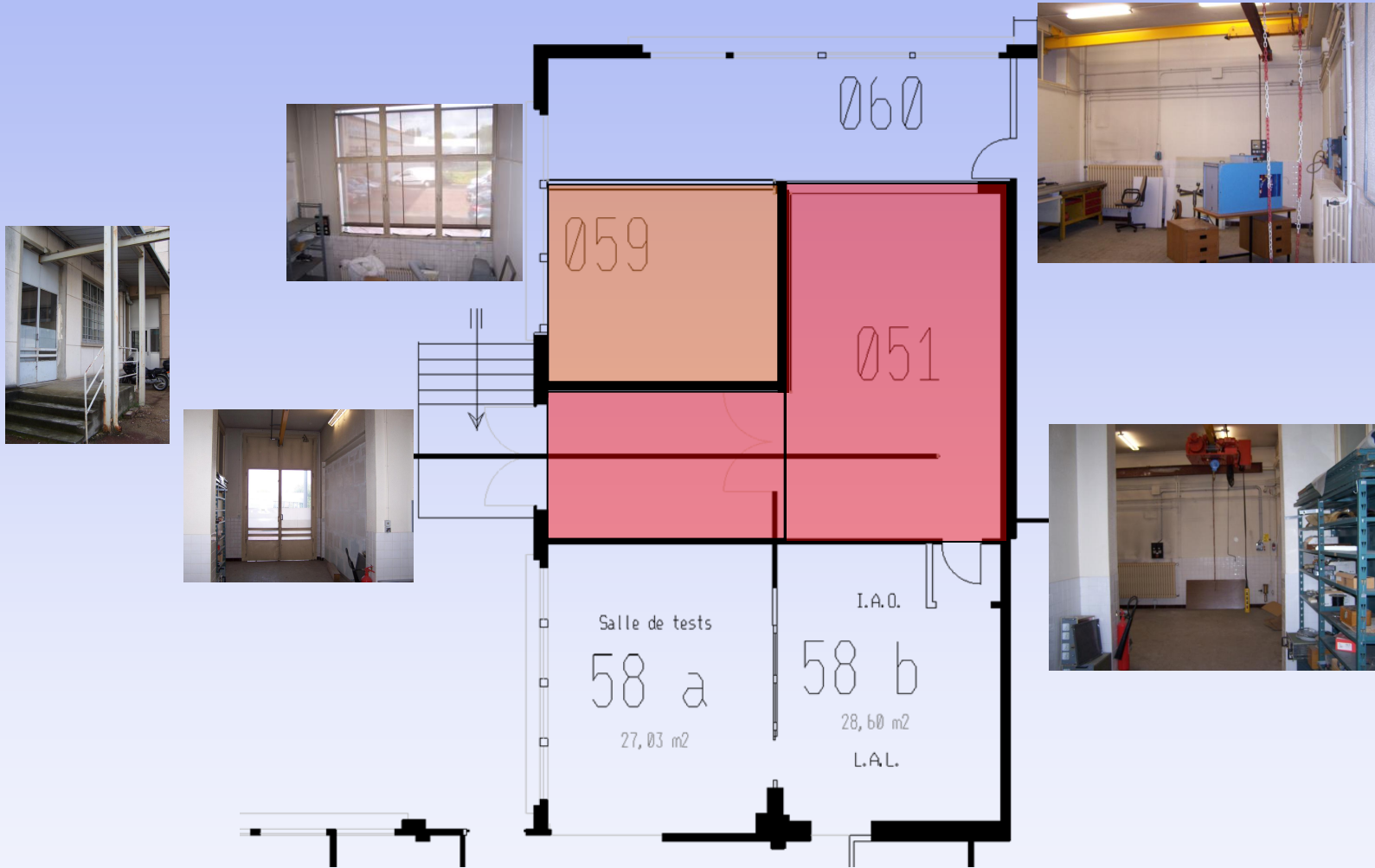


Hall requirement :

- Enough surface (arround 60m2)
- Strong floor to support heavy object
- Large access
- Relatively clean
- Handling equipment
- Electrical power

LAL allocated facilities for Ecal

Hall present state (hall 051:47m² and hall 051+ hall 059:64m²)





Exterior view of entrance with hoist rail



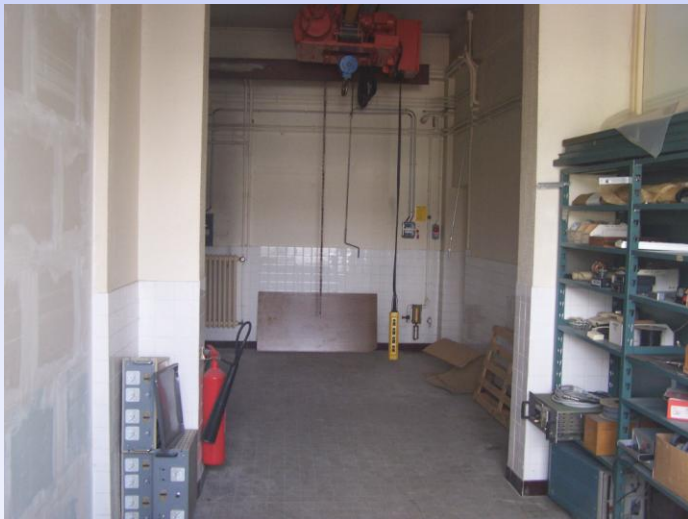
Interior view of Exterior door and hoist rail



Interior view of Exterior door and wall to 2nd room



Other side wall : Room 059



One's back to exterior door



Room 059 window



Main room (051)

23 September 2010
Casablanca, Morocco

CALICE Collaboration Meeting
Hassan University HASSAN II

Required works

Clearing and cleaning

Walls coating and painting

Revision of electrical installations.

Checking hoist rail

Phone and network wiring

Exterior door repair or change

Plastic curtain installation

Interior door installation (If enlargement to the adjacent room accepted).

Installation of a heating in 059 room

Required fitting

ASU assembly area

Slab 1 area (elements stacking, kapton HV)

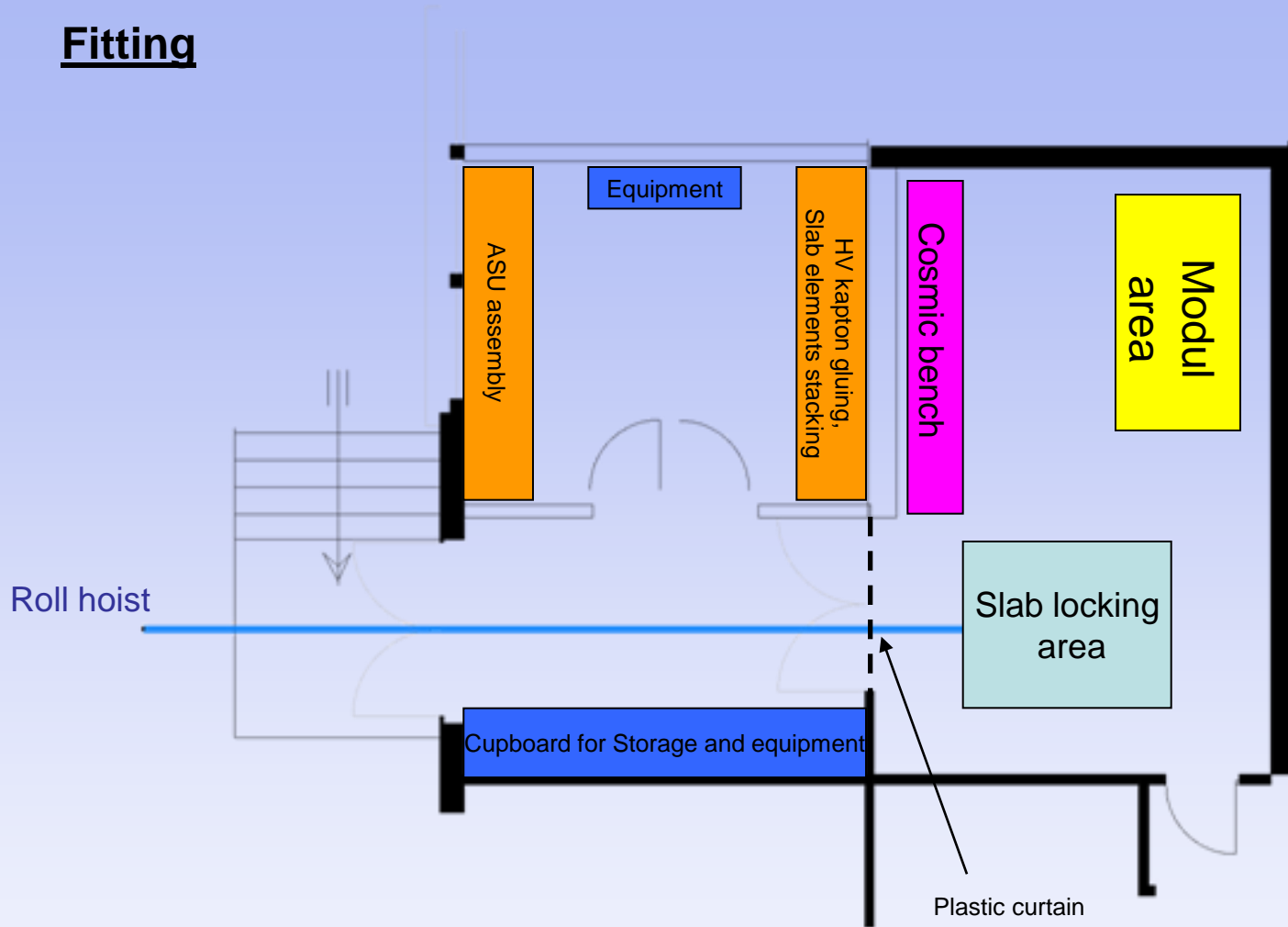
Slab 2 area (Slab locking)

Cosmic bench

Module integration area

Storage and equipment area

Fitting



Schedule

The next LAL infrastucture meeting be held mid-october :
Objective at the beginning of the works in november.

We expected start fitting at beginning year 2011.