

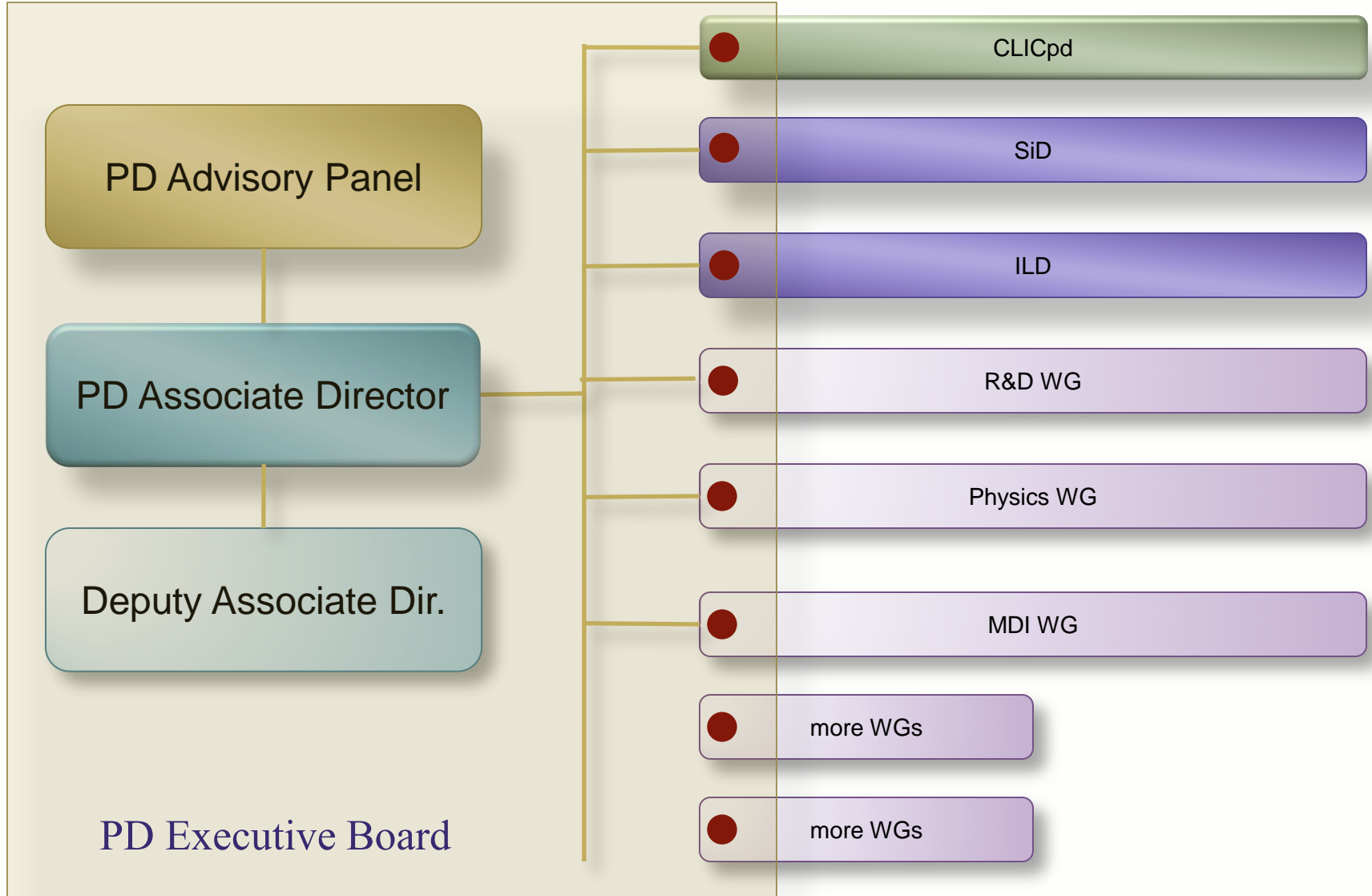


LCC Physics and Detector

Hitoshi Yamamoto
ILD WS, Kracow
Sep 24, 2013



Possible Structure (Presented at ECFA 2013)



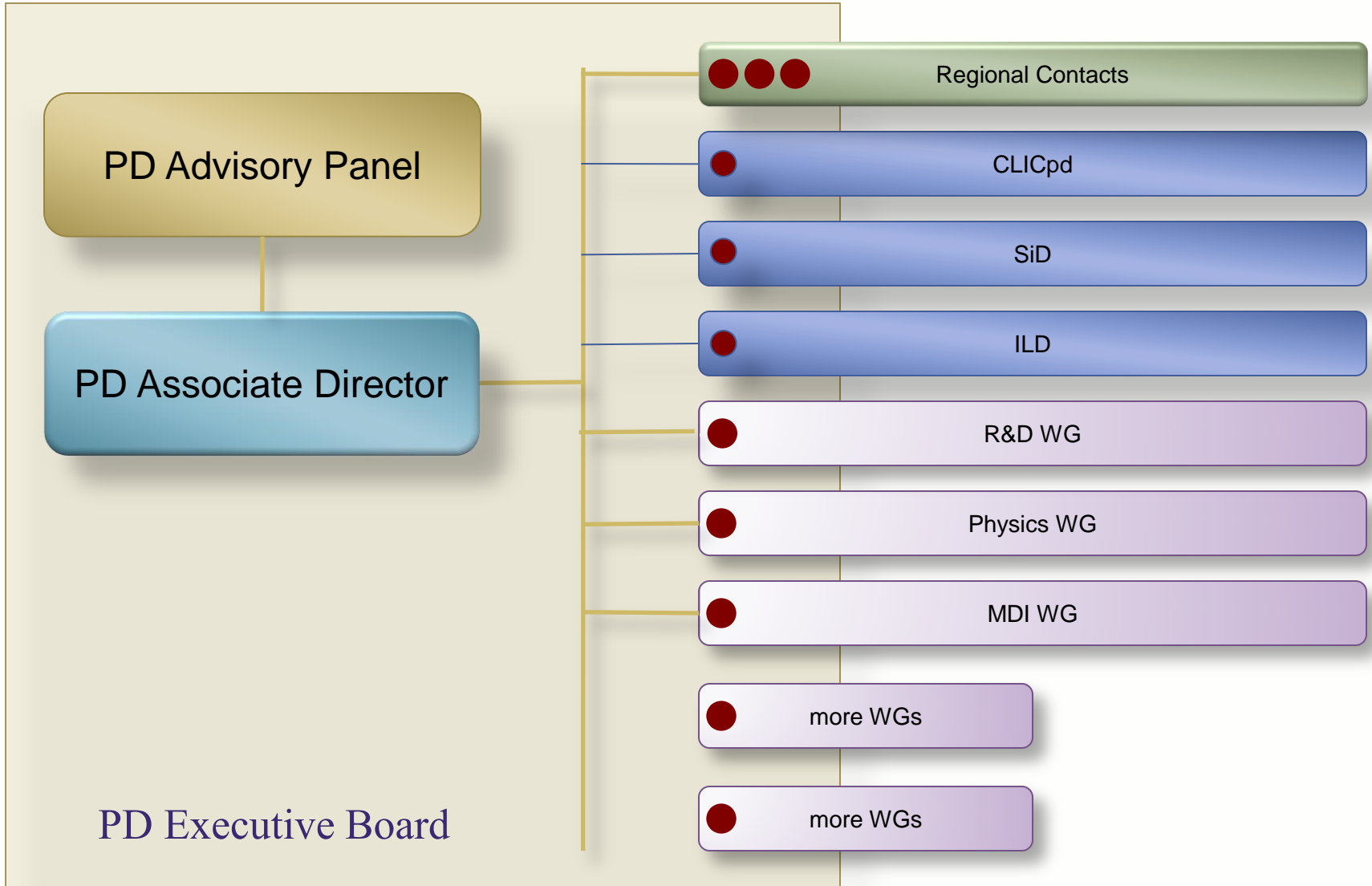


PD 'Deputies'

- At the same level as the EB, or attached to the AD?
 - There was strong desire by some that the representatives of concept groups and WGs to participate directly in decision makings
- Take the structure #2 with 3 regional contacts



Structure #2





PD Advisory Panel

- Advises the associate director in executing his/her mandate
- Could act as a reviewing body for the concept groups
 - No thick reports to produce anytime soon!
 - However, the progress of concept groups toward real collaborations should be guided objectively



EB members

- Concept groups
 - SiD – Marcel Stanitzki
 - ILD – Ties Behnke
 - CLICdp – Mark Thomson
- Regional contacts
 - Europe – Juan Fuster (interim)
 - ECFA is currently selecting the candidate
 - North America
 - One candidate selected and now discussing with the AD
 - Asia – the AD doubles as the Asian contact
- As soon as the North American contact is defined, we will start forming the WGs, and PDAP



R&D Working Group

- Coordinates detector R&Ds relevant to LC including R&Ds currently not directly adopted by the concept groups
- Represented by a coordinator, who sit on the PD executive board
- Representatives of large R&D collaborations can also attend the PD executive board.



Physics Working Group

- Will be the key body in formulating and updating the physics case for LC
 - Theorists & experimentalists
 - Closely connected with physics analysis efforts
- Observer: the deputy director (H. Murayama)
- The need is quite urgent
 - e.g. US HEP strategy ('P5')



Concept Groups

- CLICdp, SiD, ILD are now moving toward more formal organizations
 - Better defined membership
 - Sub structures defined clearer

- ILD and SiD will form cores of real collaborations
 - The process of forming the real collaborations should be open to new comers
 - Should also be done in an orderly manner

- The key for the CLICdp
 - 'collaboration/synergy' with the ILC



Linear Collider Workshops

- Two kinds:
 - **International**
 - Once a year. Location rotates among 3 regions.
 - Next one is in Tokyo, Nov 11-15, 2013
 - **Regional**
 - Once a year. Location rotates among 3 regions.
 - This one (ECFA LC2013) is an European-hosted regional workshop

- Regional workshops are now very much ‘international’, but important to keep regional initiatives.



International Linear Collider Workshops

- Has been called 'LCWS'
- Historically organized by the WWS
 - Originally, phys/det only
 - Then, accelerator and physics/detector communities started to hold joint workshops
 - CLIC also joined in
- The joint organization committee of the Tokyo LCWS has decided that
 - From the Tokyo LCWS on, the 3 associate directors of LCC will be the 3 co-chairs of the joint organization committee of LCWS, with the LCC director as an observer.



Regional Linear Collider Workshops

- Organization committee
 - Mostly regional members
 - Historically chaired by the WWS co-chair of that region
 - Other two WWS co-chairs joined the committee

- Future form of the organization is not defined yet
 - At least, the 3 LCC associate directors will join the committee
 - Who chairs the OC? : up to each region in principle

International Workshop on Future Linear Colliders

LCWS13

11-15 November 2013, The University of Tokyo

The workshop will be devoted to the study of the physics case for a high energy linear electron-positron collider, taking into account the recent results from LHC, and to review the progress in the detector and accelerator designs for both ILC and CLIC projects.

Website: <http://www.icepp.s.u-tokyo.ac.jp/lcws13/>

Contact: lcws13@icepp.s.u-tokyo.ac.jp

LCWS13 will be held at The University of Tokyo
11-15 November 2013 (registration is ongoing)
<http://www.icepp.s.u-tokyo.ac.jp/lcws13/>



International Advisory Committee:
J. Argyropoulos (CERN), J. Beringer (LHC), S. Chandra (SLAC), J. Drees (DESY), H. Grosse (DESY), H. Hagedorn (DESY), M. Hohlmann (DESY), J. Kopp (DESY), L. E. Peters (DESY), B. Foster (DESY/Hamburg/Oxford), J. V. Foster (FRC Yakutsk), M. Harrison (BNL), S. Kanamitsu (Tokyo), H. Murayama (Tokyo/Kavli/Princeton/UC Berkeley), M. Nagai (KEK), T. Oishi (KEK), M. E. Peskin (SLAC), M. Ross (SLAC), J. Stenlund (CERN), B. Stenlund (CERN), C. Tang (Tsinghua), M. Thaler (CERN), H. Terauchi (ANL), L. White (CERN), M. Yamamoto (Tohoku), K. Yokoyama (KEK), J. Yoo (KIT/Argonne)

Local Organization Committee:
M. Abe (Tokyo), T. Arai (KEK), H. Hayano (KEK), D. Jentsch (Tokyo), Y. Kariya (Tokyo), S. Komatsu (Tokyo), M. Kurita (U. Tokyo), A. Miyamoto (KEK), M. Nozaki (KEK), T. Omi (KEK), T. Sasaki (KEK), T. Suehara (Tohoku), T. Sugimoto (KEK), M. Taniuchi (KEK), T. Tsuruta (KEK), H. Yamamoto (Tohoku), Y. Yamamoto (KEK), S. Yamashita (Tokyo), Y. Yokoyama (KEK)

Sponsors:
M. Shiota (Tokyo)

