



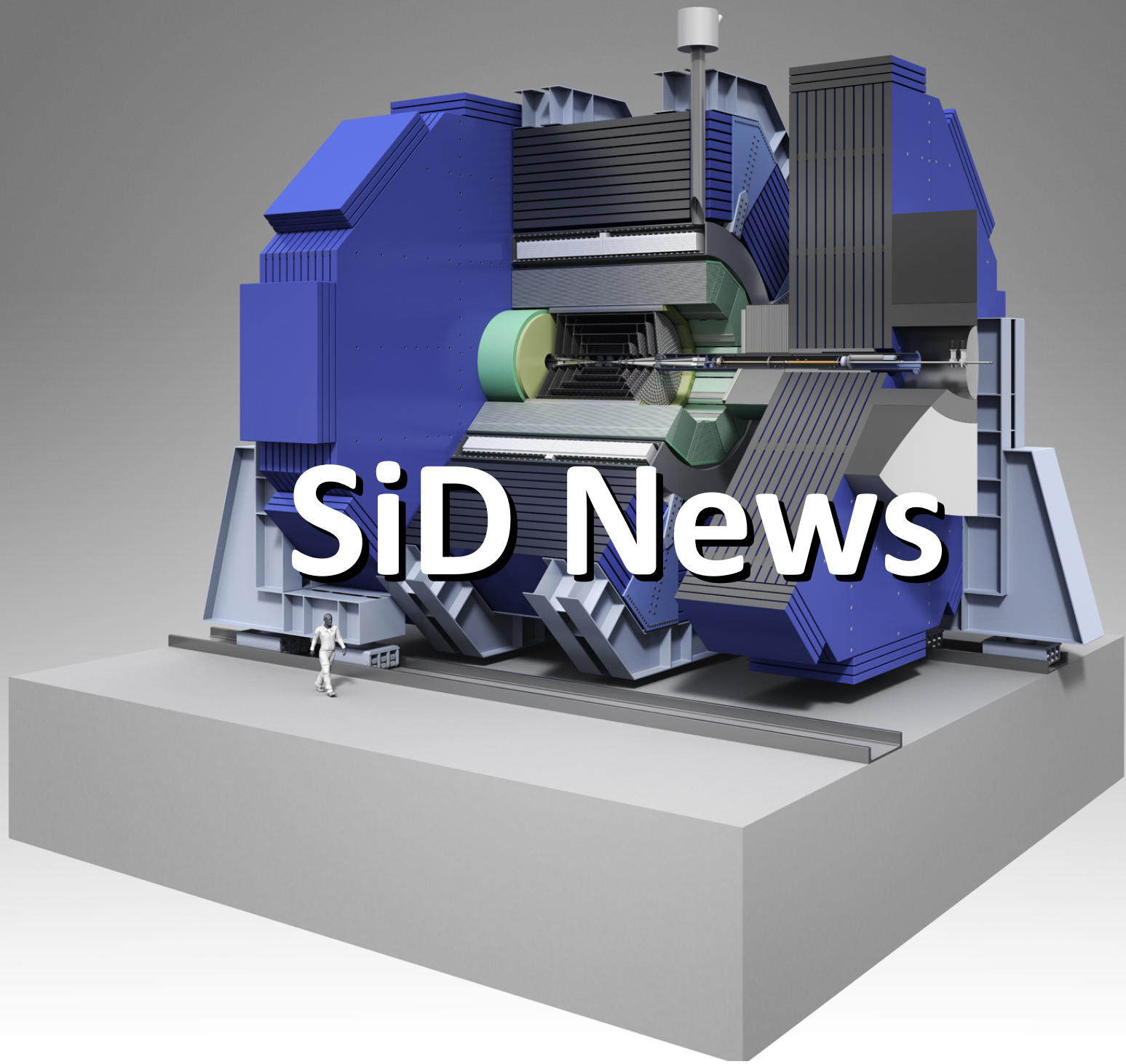
SID

Welcome & News

12/January/2015

Marcel Stanitzki





SiD News



- Lots of Meetings
 - SiD Workshop @ Tokyo, September 2014
 - MDI/CFS Meeting in Ichinoseki, September 2014
 - First SiD IB Meeting, September 2014
 - LCWS 2014 in Belgrade, October 2014
- News from the Consortium
- Other news
- Funding

SiD Meeting in Tokyo



- First SiD meeting in Asia (2nd - 3rd September)
 - Kindly hosted by Hiro Aihara and the University of Tokyo
 - Strong Japanese participation
 - Very productive discussions
 - See Agenda [here](#)

SiD Team heading for Ichinoseki



We very much enjoyed the visit

Touring Kitakami Mountains



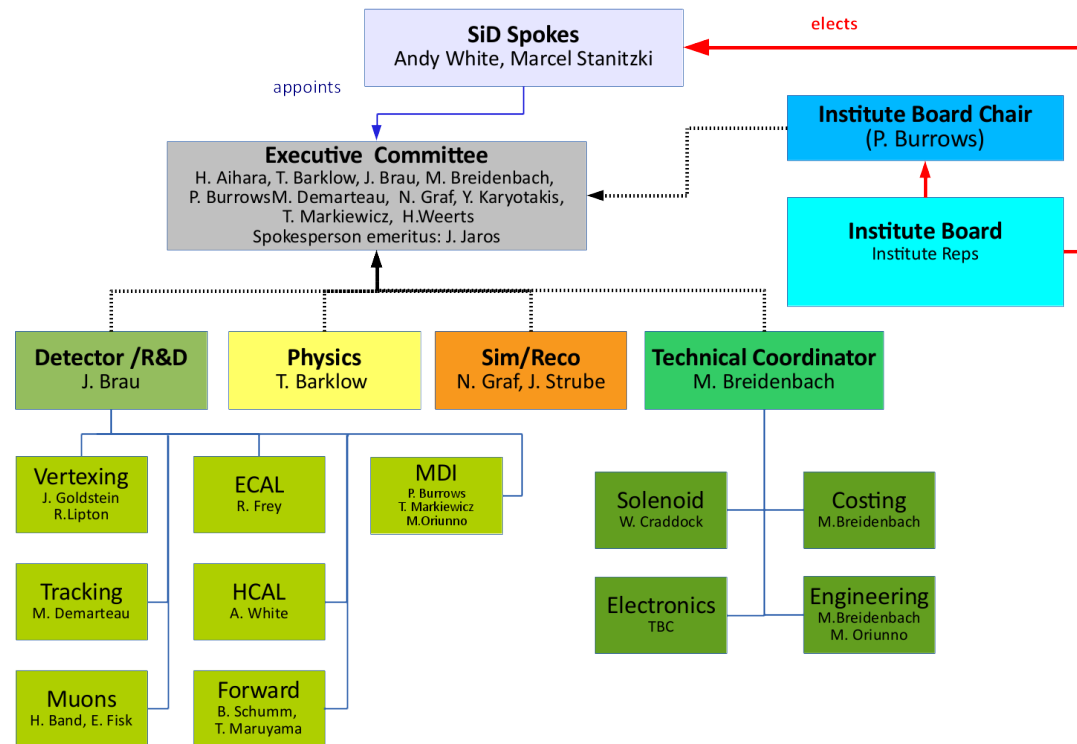
- The 1st meeting of the nascent SiD Consortium took place by WebEx on 22 September 2014
- Initial bylaws adopted (see consortium website)
- Conscriptation of Institutional Board Chair
 - Philip Burrows (Oxford University)
- 23 Institutions so far



- Very nice location
- ~ 200 Participants
- Two plenary SiD Talks
 - Bruce Schumm on SiD general (Monday)
 - Jan Strube on Optimization (Thursday)
- Also several SiD talks in the parallel sessions



- With the formation of the IB, the consortium is now “up and running”
 - 2nd IB meeting today
- Change in management structure
 - Joel Goldstein (Bristol) has agreed to co-chair the Vertex WG





Webpages

- We have a new set of web pages
 - <http://silicondetector.org>
- Effort headed by Jim Brau
- Please comment & contribute



The screenshot shows the homepage of the Silicon Detector website. At the top, there is a green header with the SiD logo on the left and the text "Detector for the ILC" on the right. Below the header, the page is divided into three main sections. On the left is a navigation menu with a list of links: SiD, Detector Concept, Consortium, Physics, Detector R&D, Documents, SLAC Confluence Wiki, SiD Indico - w/ meetings, History, and SiD Contact. Below this menu is the text "Linear Collider Collaboration Physics & Detectors" and the website URL "linearcollider.org". The middle section is titled "SiD - 'Silicon Detector'" and contains a paragraph: "The Silicon Detector Design Study is developing the SiD Detector Concept for the ILC into a detailed, optimized, and fully integrated detector design. The SiD concept incorporates Si/W electromagnetic calorimetry and all-Si tracking in a detector design which attempts to optimize physics performance, constrain costs, and be robust against physics and machine backgrounds." On the right side of the page is a 3D CAD rendering of the detector structure, showing various components in blue and grey.





Joining the consortium

- SiD is open to institutions and individuals
- Interested
 - Contact the spokespeople (Andy White & Marcel Stanitzki)
 - Or the Institute Board Chair (Phil Burrows)
- To formally apply, please send an email to the Chair of the Institute Board
 - The IB will approve the application



LCCPDEB

- Hitoshi Yamamoto will give a detailed report Monday afternoon
- Andy will represent SiD on the LCCPDEB now for one year (we agreed on a annual rotation before)



Infrastructure WG

- Sakue Yamada is chairing this WG
- SiD reps
 - Marty Breidenbach & Marcel Stanitzki
- Current task
 - Estimation of the manpower needs during construction
- As usual ILD has used a slightly different approach to derive these numbers
 - See Talks by Marty & Yasuhiro on Tuesday
- As we are all at SLAC, we'll have a few discussions on this subject



ILC Lab

- Assumption: ILC lab is close by the IR
- There are two basic questions
- a) How many people at the ILC Lab/IR do we need to assemble/commission/operate SiD
 - This we can estimate
- b) How many people from SiD will be placed at the lab doing analysis, etc.
 - That's a political question
 - How big is the lab going to be
 - How is the collaboration structuring itself
 - A rough estimate from ATLAS (15% are at CERN) ...
- Your input is welcome

- The Project is getting more real
 - This also means we're getting real questions
 - How much computing do we need
 - What is our raw data rate
 - Online reconstruction vs. Offline reconstruction
- A first set of numbers has been assembled
- Important Input to the MEXT review
- See Jan's Talk today

Change Requests

- Something that was definitely needed
 - Documentation of changes to the accelerator baseline design
- CR so far covered
 - Change of L^*
 - Change of design of the IR
- Newest Change Request: Extension of Main Lan tunnel by 1.5 km
 - Driven by the machine
 - Benefit for us, This enables $E_{\text{CMS}}=550$ GeV (ttH)
- Tom Markiewicz is the SiD member at the Change Management Board



#mylinearcollider campaign

- From Tohru Takahashi
 - As you may know, we are now collecting messages from ILC supporters as apart of effort to realize the ILC in Japan.
Please see a message from Lyn Evans regarding the campaign
<http://newsline.linearcollider.org/2014/10/30/voice-your-dream-for-the-ilc>
Now, about 500 messages have been recorded and posted on the YouTube;
<http://newsline.linearcollider.org/2014/11/26/they-want-the-ilc-mylinearcollider>
We would like to collect as many messages as possible to accelerate momentum toward the ILC. We know many of you already contributed the campaign, but we appreciate if you encourage more SiD colleagues to join the campaign in coming SiD workshop.
An instruction is here in an issue of LCNEWSLINE
<http://newsline.linearcollider.org/2014/10/02/take-part-in-the-mylinearcollider-campaign>
The instruction shows how to take a video message, but a still picture is also possible (you see some example in the YouTube).
This campaign is a part of effort to convince Japanese policy maker's passion of scientists and we think it is very important.
- To simplify recording more videos, the SLAC Multimedia Team will be helping recording these videos on Tuesday 10:30-11:30.
- Please support our Japanese Colleagues !





SiD Funding

The News : (almost) no news

- Attitude of funding agencies worldwide is way more positive towards the ILC
 - Also saying LHC Upgrade first ...
- But this hasn't filtered down in a real change in funding yet
 - Simple Logic : No ILC Project → No Funding
- Update on the US Situation: see the ALCC talk
- Only positive exception:
 - The EU has approved the E-JADE proposal on staff exchange between EU groups and Japan
 - This has an explicit Work package on “Site-specific studies for the ILC in Japan”



Staying in touch

- Webpage: <http://silicondetector.org>
- We have a new *sid-general mailing list*
- Easy to subscribe to
 - Send a mail with `subscribe sid-all John Doe` in the body to listserv@slac.stanford.edu
 - <https://listserv.slac.stanford.edu/cgi-bin/wa?SUBED1=SID-ALL&A=1>
- List will be used for
 - Meeting and Workshop announcements
 - General SiD news
- SiD Newsletter
 - By Email and available via the [Webpages](#)



A scenic view of a rocky coastline. In the center, a small, dark rock island is topped with several tall, dark evergreen trees. The ocean is a deep blue, with white waves crashing against the dark, jagged rocks. The foreground shows a dark, rocky cliffside. The overall scene is bright and sunny, with clear skies and vibrant colors.

**Enjoy the workshop
and sunny California**