

CCC

André Welker

Bruno Bauss, Volker Büscher, Reinhold Degele, Sascha Krause, Yong Liu, Lucia Masetti, Uli Schäfer,
Rouven Spreckels, Stefan Tapprogge, Rainer Wanke

CALICE electronics and DAQ Meeting
DESY Hamburg, Dec. 10, 2012



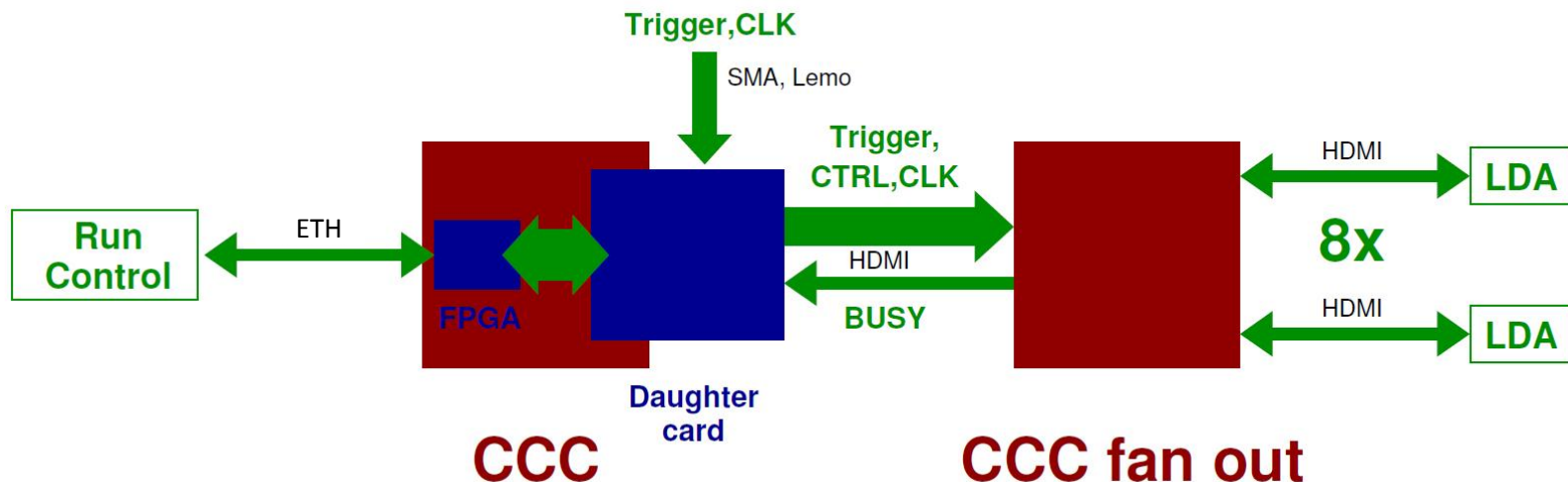
JOHANNES GUTENBERG
UNIVERSITÄT MAINZ



New design for CCC

Aim:

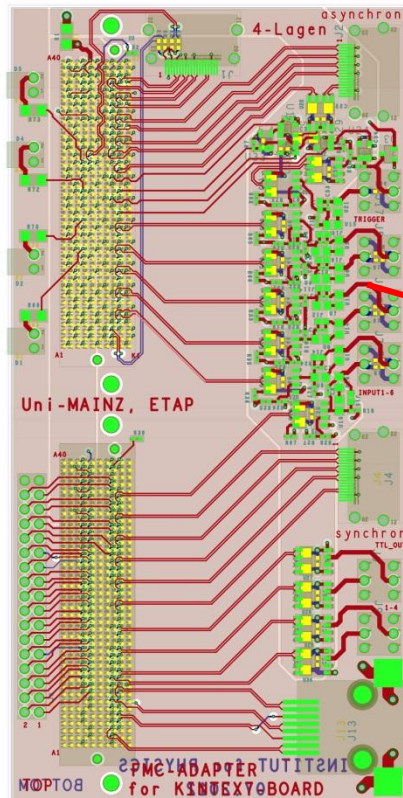
1. **New configuration interface via Ethernet**
 - to set the four different running modes
2. **Improve stability**
3. **Additional commands and read-back of status**



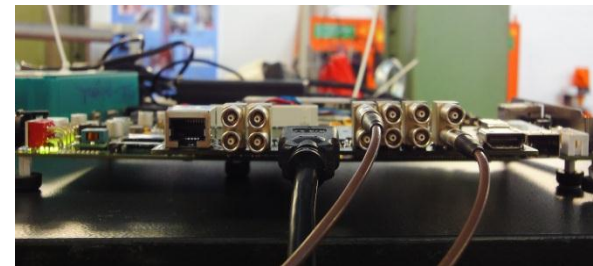
Current (Mz) version of CCC

Mezzanine on an Kintex 7 Evaluation-Board:

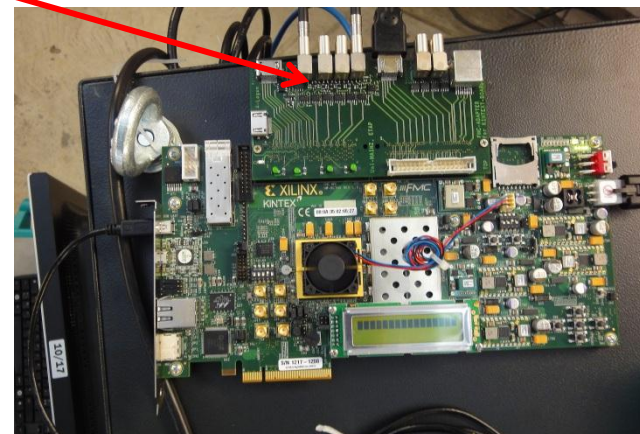
1. FPGA-controlled CCC board:



CCC at the testbeam (front):



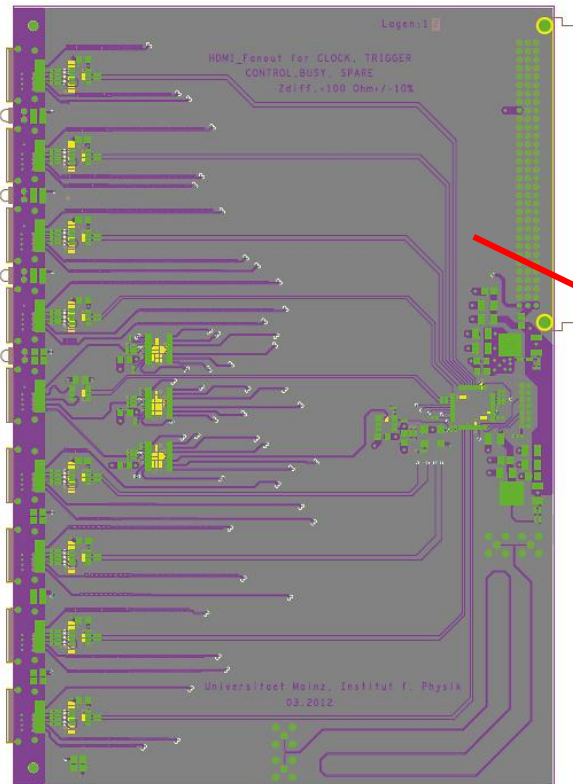
CCC at the testbeam (top):



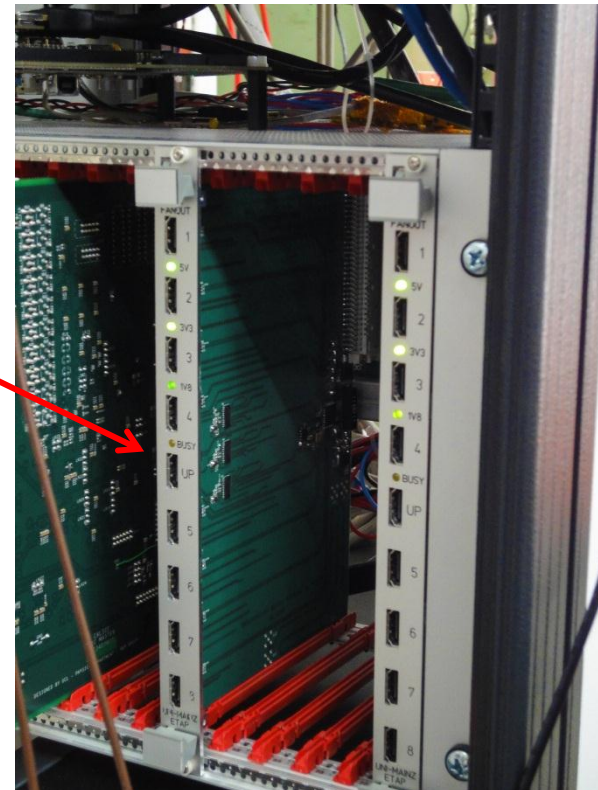
Fan-out

6U-VME Fan-out board:

2. Fan-out board layout:



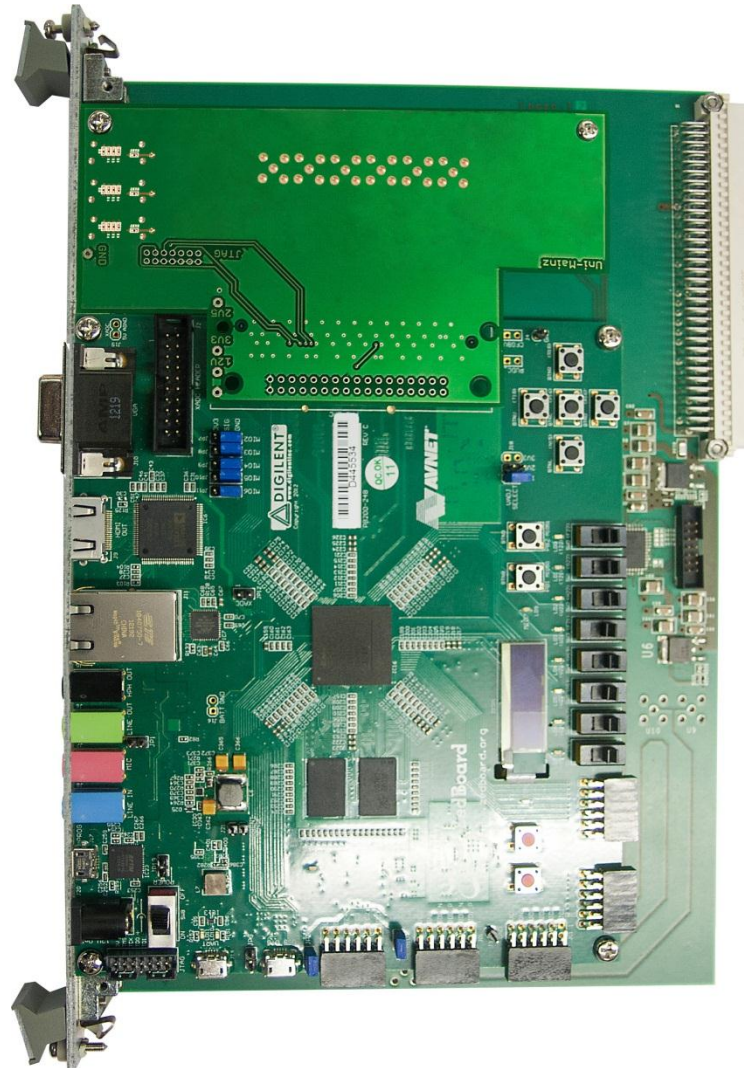
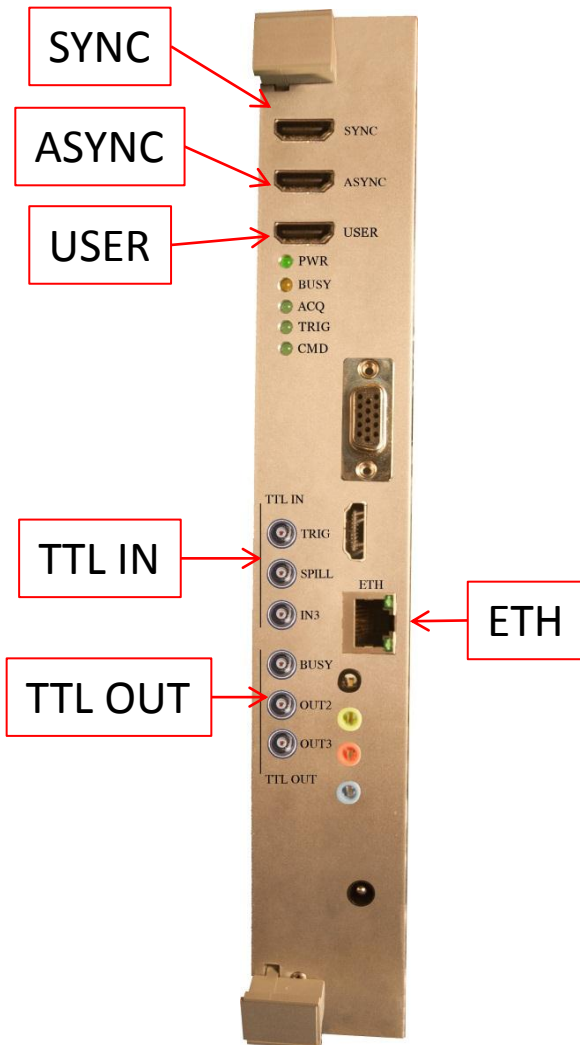
Fan-out board at the testbeam:



CCC: Current development

1. 6U-VME standard (initially double width)
2. 3 HDMI (SYNC, ASYNC, USER/optionally into DAQ)
3. 6 LEMO-connectors (3 TTL IN/OUT) (TRIG, SPILL, IN3; BUSY, OUT2,OUT3)
4. Control the CCC over the Ethernet

New CCC



Zedboard

Modes



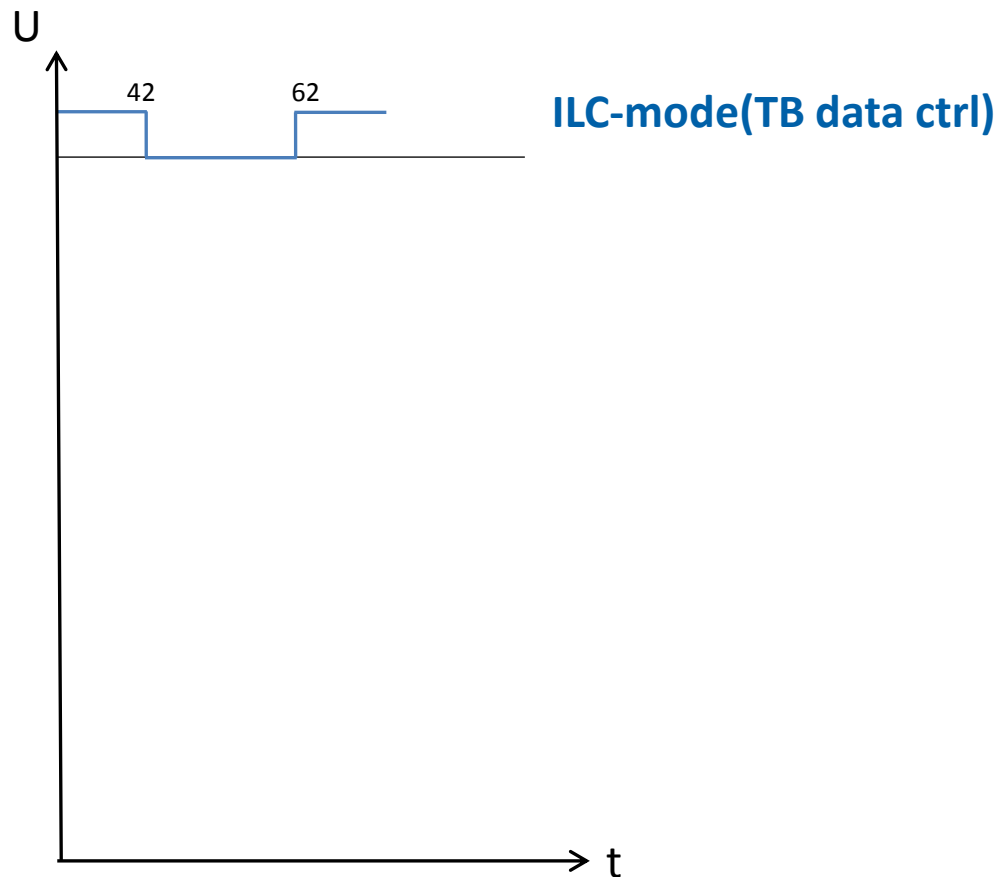
**Four main modes and 13 configuration commands:
(e.g. status, manual trigger, hold trigger, pass trigger, rising edge, reset)**

Modes



Four main modes and 13 configuration commands:
(e.g. status, manual trigger, hold trigger, pass trigger, rising edge, reset)

1. Spill only:

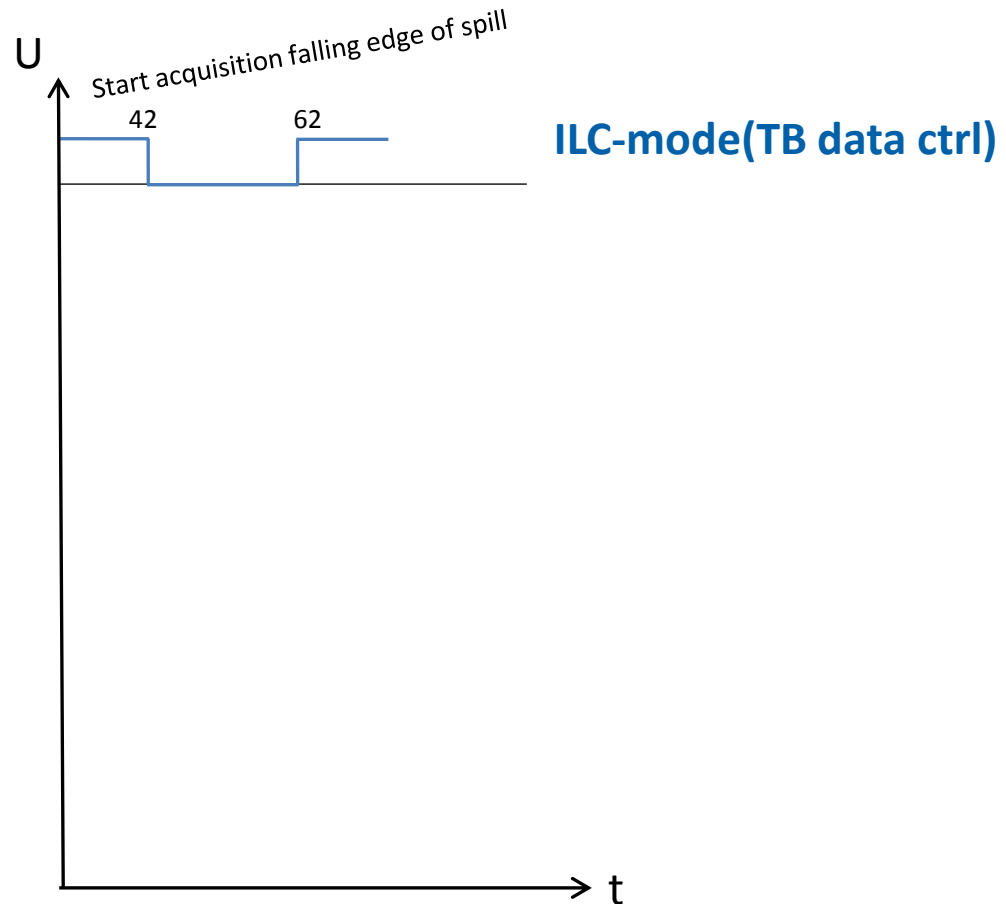


Modes



Four main modes and 13 configuration commands:
(e.g. status, manual trigger, hold trigger, pass trigger, rising edge, reset)

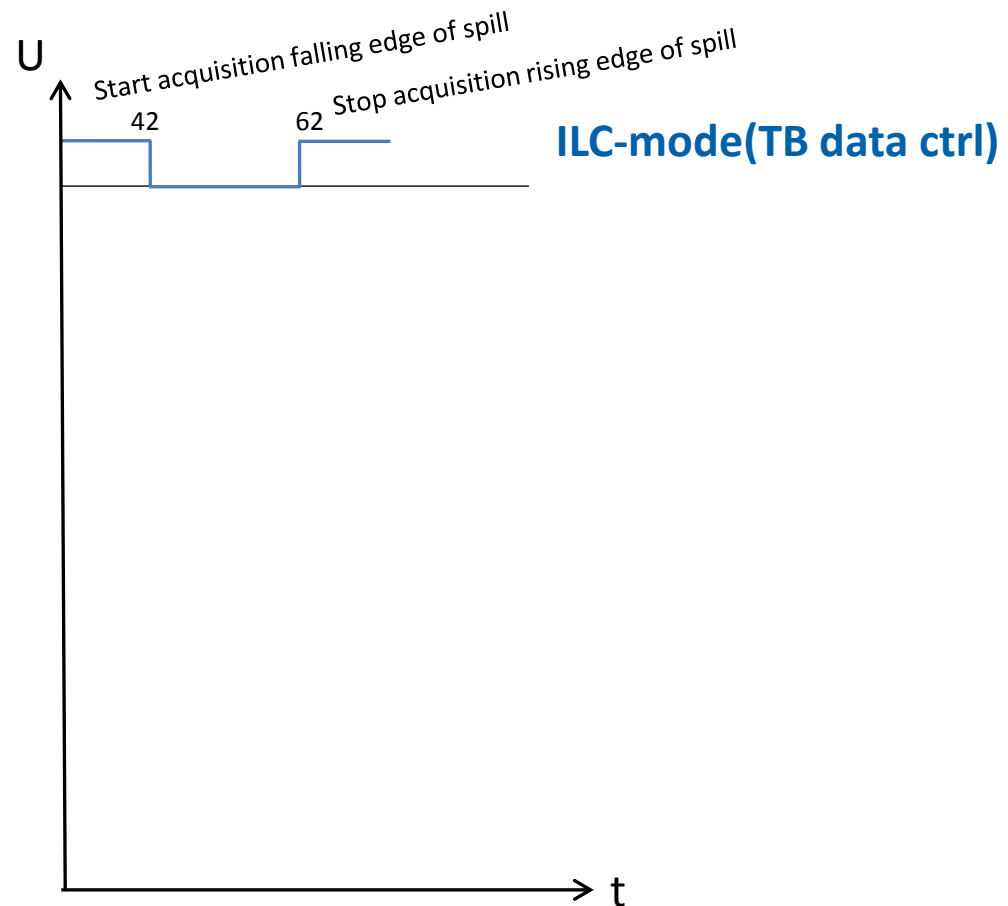
1. Spill only:



Modes

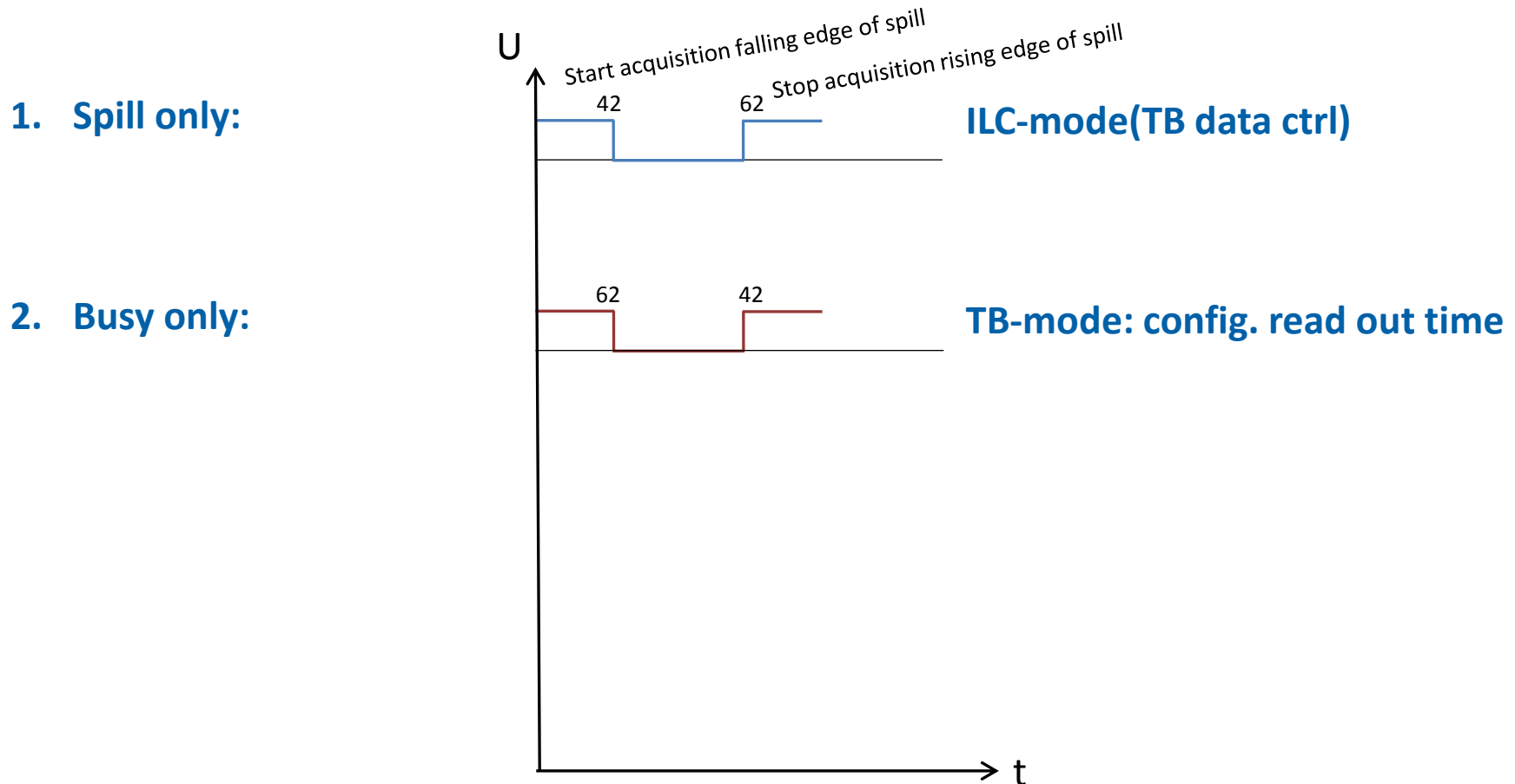
Four main modes and 13 configuration commands:
(e.g. status, manual trigger, hold trigger, pass trigger, rising edge, reset)

1. Spill only:



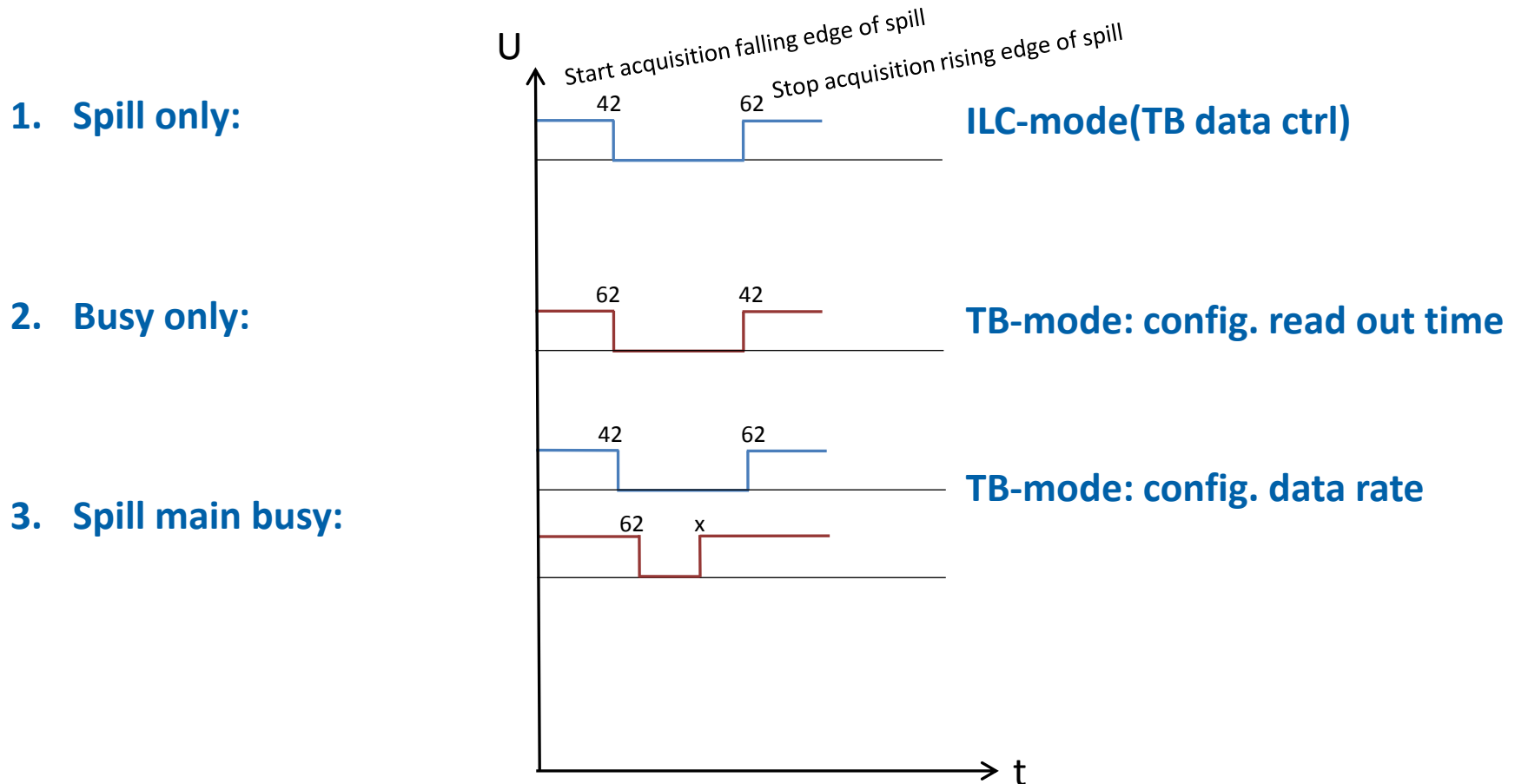
Modes

Four main modes and 13 configuration commands:
(e.g. status, manual trigger, hold trigger, pass trigger, rising edge, reset)



Modes

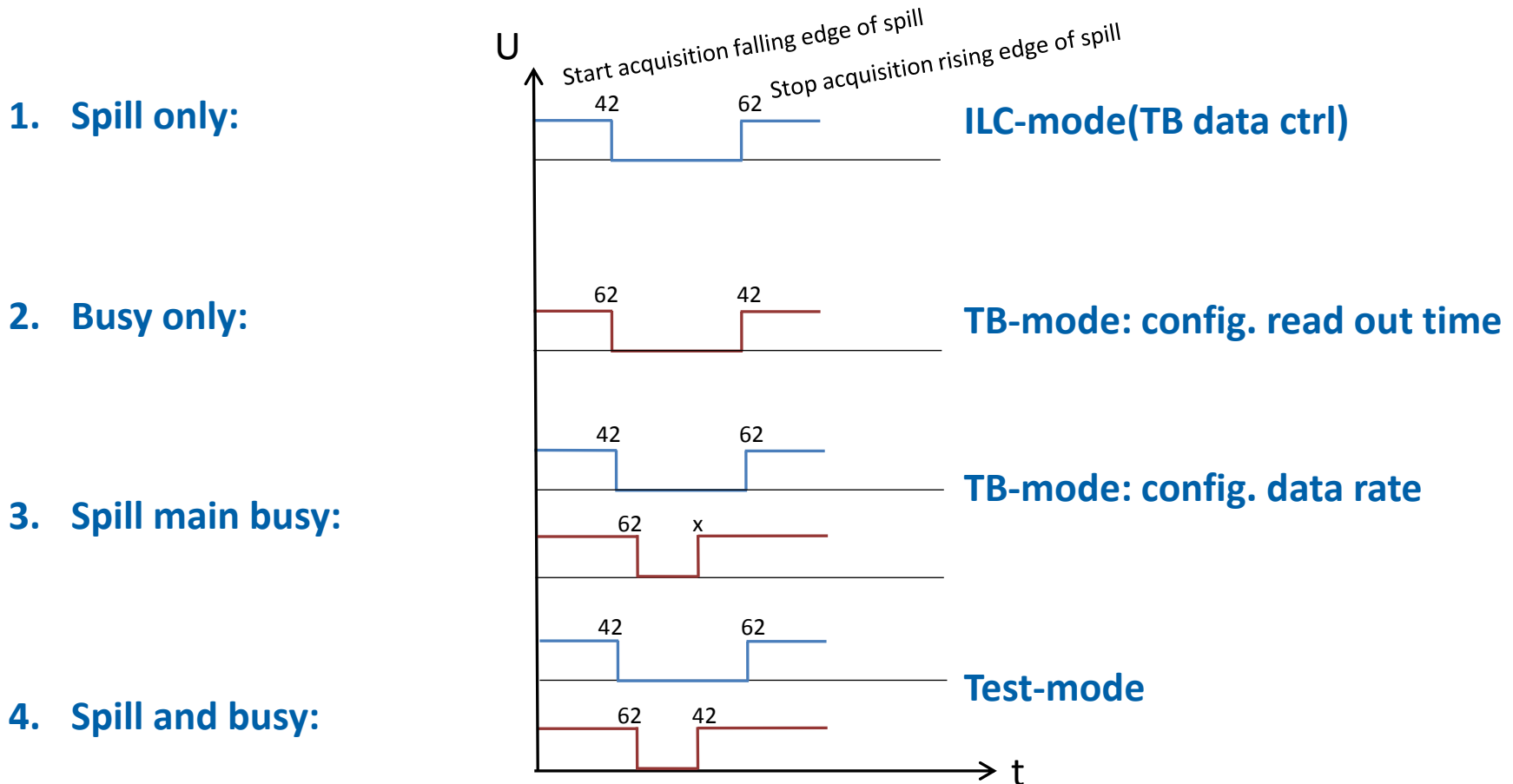
Four main modes and 13 configuration commands:
(e.g. status, manual trigger, hold trigger, pass trigger, rising edge, reset)



Current op modes

Four main modes and 13 configuration commands:

(e.g. status, manual trigger, hold trigger, pass trigger, rising edge, reset)



Status/next steps

1. Mz Group is growing
2. Currently busy moving into the new detector lab
3. Zynq based CCC under development
4. PCB design almost finished (R.D. and A.W.)
5. Software and firmware development under way (S.K. and R.S.)
6. Further last minute input welcome

Thank you for your attention!