

A detailed 3D cutaway rendering of a particle accelerator structure, likely a synchrotron. The image shows multiple layers of components, including a central bending magnet section with a curved lattice of magnets. The structure is composed of various materials, some highlighted in green and blue, and is supported by a complex mechanical framework. The overall design is highly symmetrical and precise.

SiD

The new structure

10/October/2013

Marcel Stanitzki



SiD - Restructuring

- We have been very successful with a light-weight organization until now
- It is clear that with the ILC moving forward we have to move to some more formal Organization
 - Not a collaboration, but a consortium
- Hence the Spokes and the Exec have drafted a set of **Byelaws**
- Goal
 - As lightweight as possible
 - Give the Institutes a way for input
 - Define "membership"
 - With the clear understanding, that the structure while evolve alongside the project





Some key points

- SiD will remain open to all interested people and groups
 - SiD is neither a closed nor exclusive club
- Membership in SiD
 - Representation in the Institute Board (IB)
 - Actively take part in decisions
 - Become an Author (once we start having SiD publications)
- Both individuals and institutes can be members
- How to become a member
 - A letter to the Institute Board Chair
 - Vote on membership by the IB



SiD Byelaws

The Executive Committee

The role of the Executive committee is to discuss and give advice to the Spokespersons on all major issues concerning the SiD Consortium.

The Executive committee will consist of:

- The two Spokespersons (ex officio)
- The Chair of the Institutional Board (ex officio)
- The Technical Coordinator and the R&D Coordinator (ex officio)
- Up to eight representatives of major areas of the SiD Consortium as selected by the Spokespersons.

The Institutional Board

The Institutional Board is the body representing the institutions and individuals of the Consortium. Its functions are the following:

- To provide a forum for discussions of all institutional matters related to the SiD detector concept:
 - Set policy on authorship of publications, (eventually) shift quotas,
 - A common fund and contributions to it,
 - The assignment of speakers for SiD talks
 - The admission of new members/institutes to the SiD consortium
- To elect the Spokespersons
- To elect an Institutional Board Chair
- To amend/change the SiD Consortium Byelaws



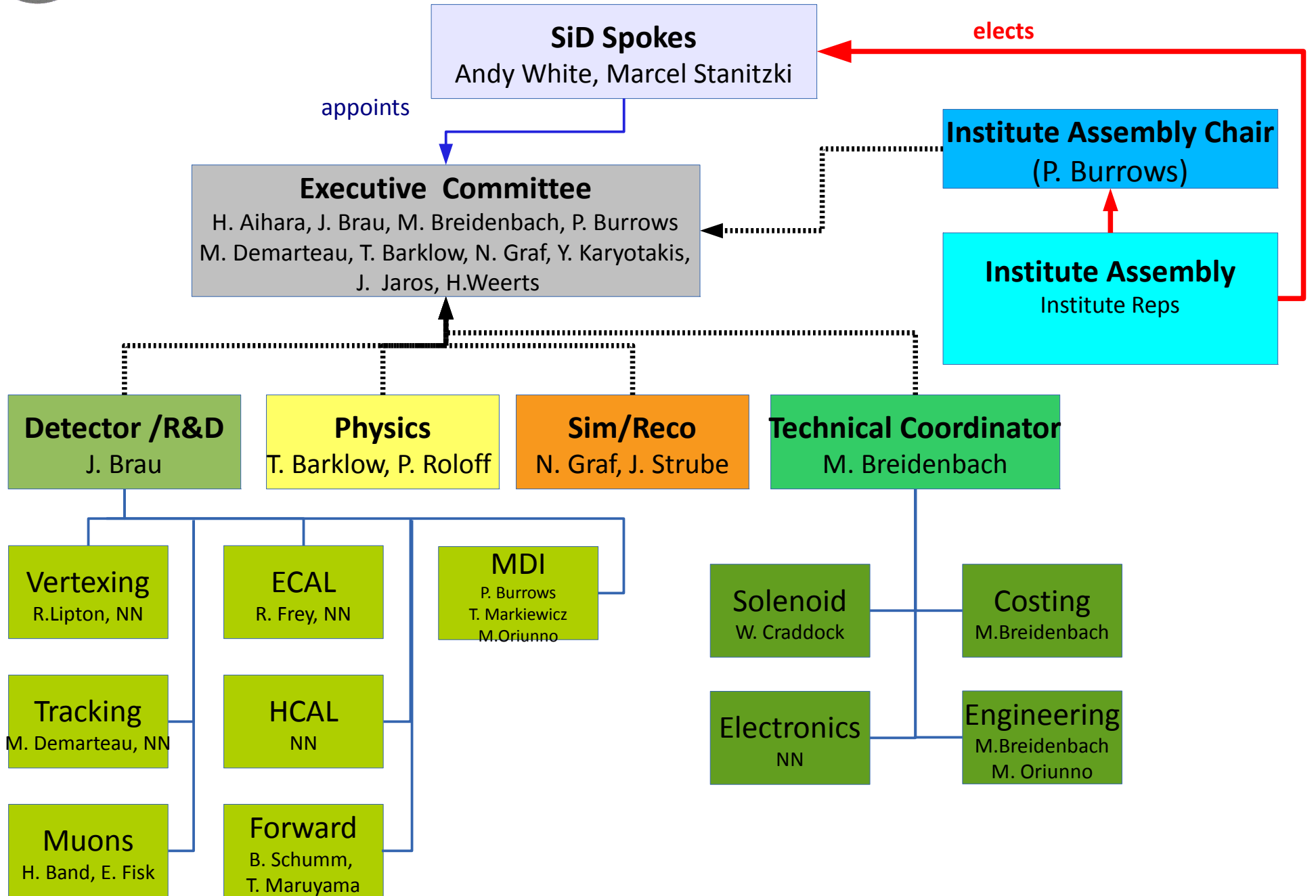


The Institute board (IB)

- Represents the Institutes and individual members
- Tasks of the IB
 - Approve new members
 - Modify byelaws
 - Run spokes elections at the end of a term
- SiD Exec has appointed Phil Burrows as first IB chair
 - His task is to set the IB up and get it started
 - IB will be operational with 10 members
- The complete set of byelaws can be found here:
[http://www-hep.uta.edu/~white/SiD/Byelaws for the SiD Detector Consortium_v1 3.doc](http://www-hep.uta.edu/~white/SiD/Byelaws%20for%20the%20SiD%20Detector%20Consortium_v1%203.doc)
- Plan is to get the SiD consortium started in October 2013
 - With a first set of byelaws



Organigram Draft October 2013



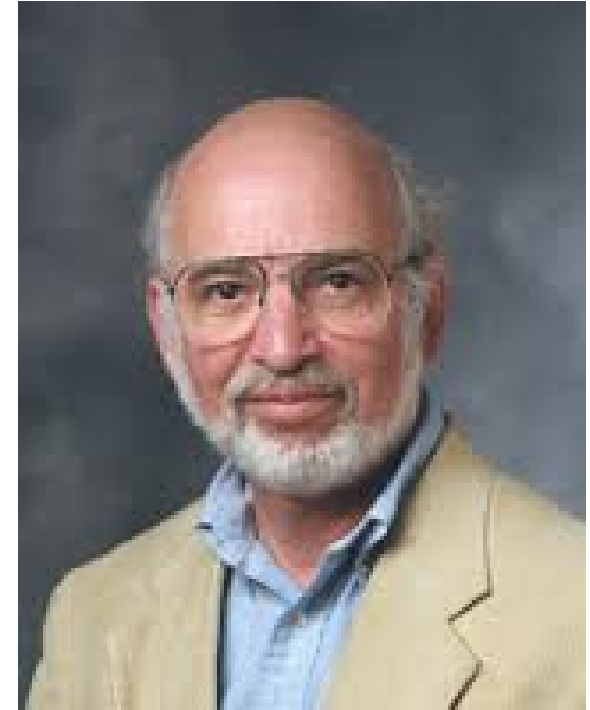
New faces



IB char
Philip Burrows
Oxford



RD Coordinator
Jim Brau
U Oregon



**Technical
Coordinator**
Marty Breidenbach
SLAC



Notes on the Organigram

- For Physics & Sim/Reco
 - Just kept the succesful DBD team in place
 - Did a great job
- The coordinators should serve as point of contact for their activities
- The sub-detector boxes
 - We need to revisit them soon
 - Need people interested in convening these groups
 - Need to revive some activities
 - If you're interested, let us know



Next steps

- The byelaws aren't cast in stone...
 - They'll evolve as the situation with the ILC evolves
 - Once the IB is up, it is in their hands
- Byelaws should enable us
 - To move to a collaboration smoothly, once this is needed
- Now we're waiting for signals from Japan





Communication

- SiD Workshops
 - ~ 2 per year
- SiD General Meetings
 - In between workshops
 - News and updates, open for everybody
- Spoke's Question time
 - Following the model of the British PM question time
 - Your opportunity to ask us and give us feedback



New mailing list

- We have a new *sid-general* mailing list
- Easy to subscribe to
 - Send a mail with `subscribe sid-all John Doe` in the body to `listserv@slac.stanford.edu`
- List will be used for
 - Meeting and Workshop announcements
 - General SiD news

Summary

- A set of byelaws has been drafted
 - To get the consortium started
 - Comments/suggestions welcome
- Setting up an IB
 - Phil Burrows as chair
 - Hope to be up and running soon
- New R&D/Technical coordinators
 - Thanks to Jim and Marty for taking this on
- Communication
 - Workshops
 - Mailing lists
 - General meetings between workshops
 - Spokes Question time