

Situation in Japan and LCC PD status

Hitoshi Yamamoto, 15-Oct-2013, SID meeting, SLAC

ILC Site Selection in Japan

Announcement

(Aug 23, 2013)

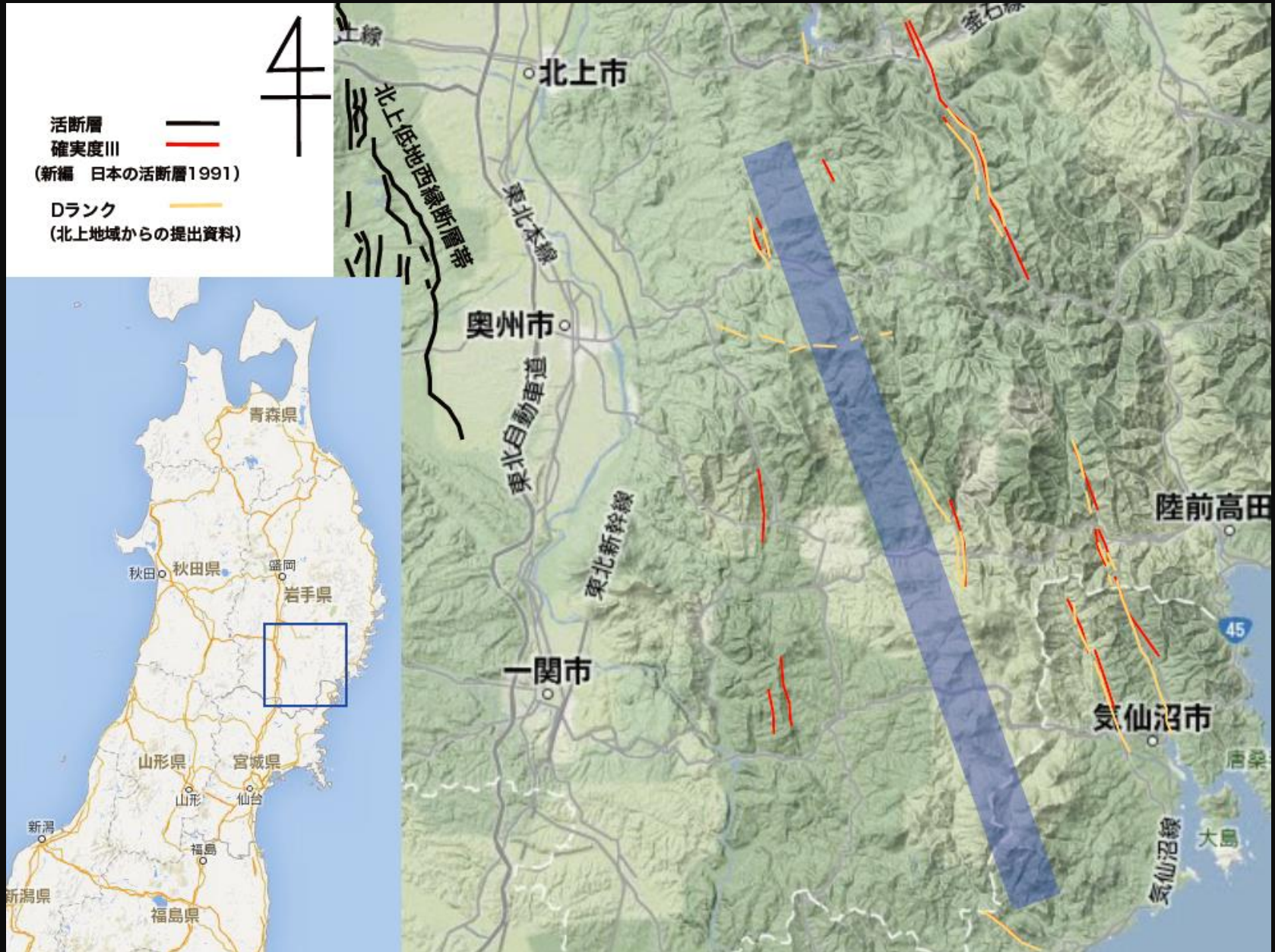
August 17, 2013

The ILC site evaluation committee of Japan has assessed the two candidate sites based on technical and socio-environmental criteria and unanimously concluded as follows:

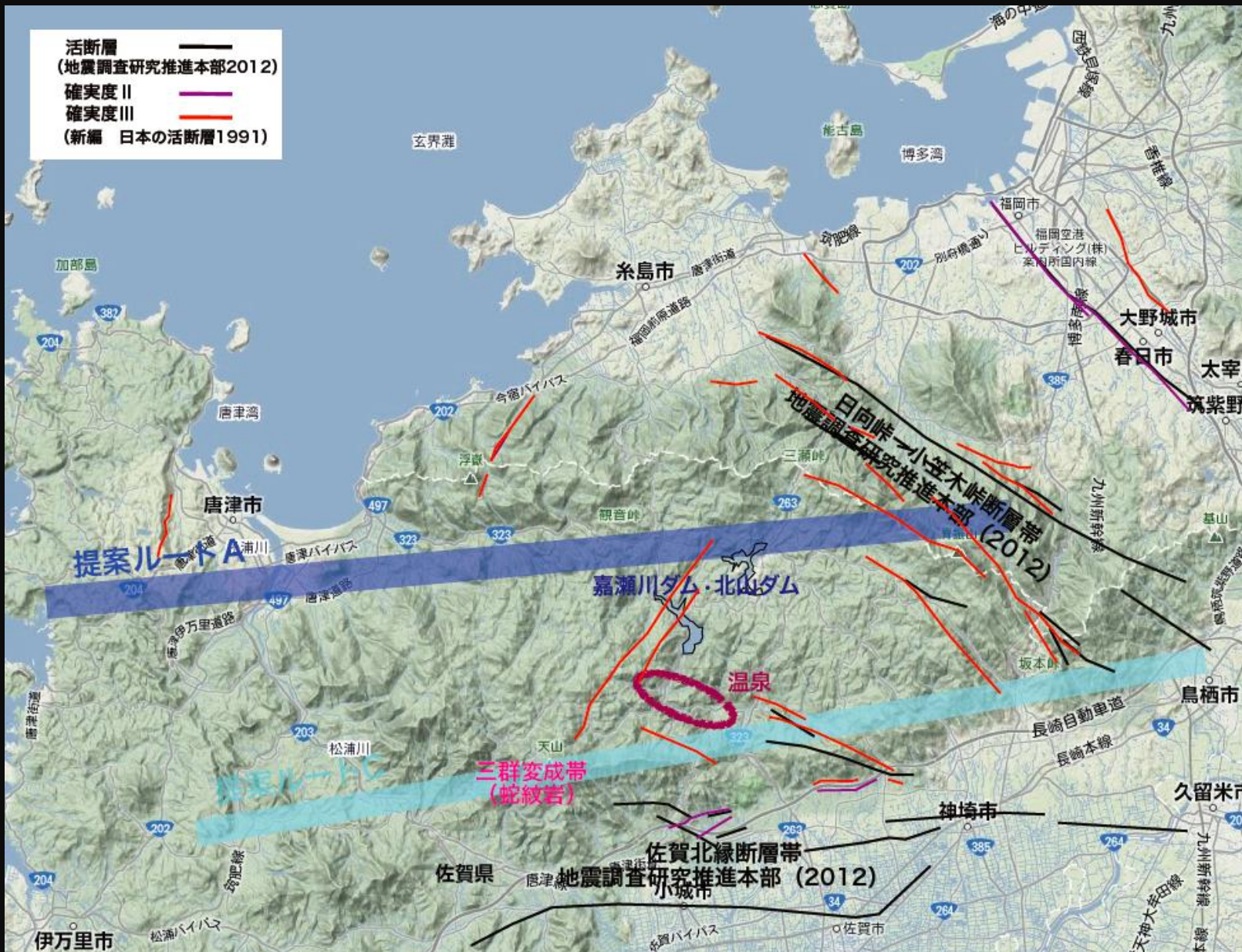
The Kitakami site is evaluated to be the best domestic candidate site for the ILC.

(Signatures)

Kitakami Route

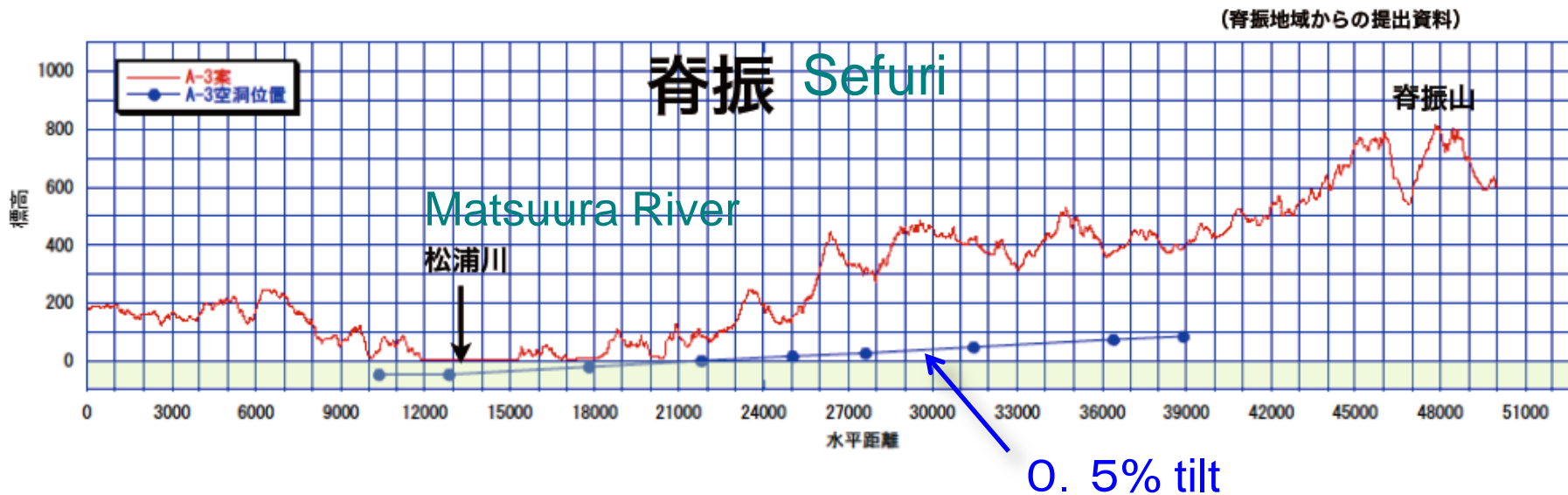
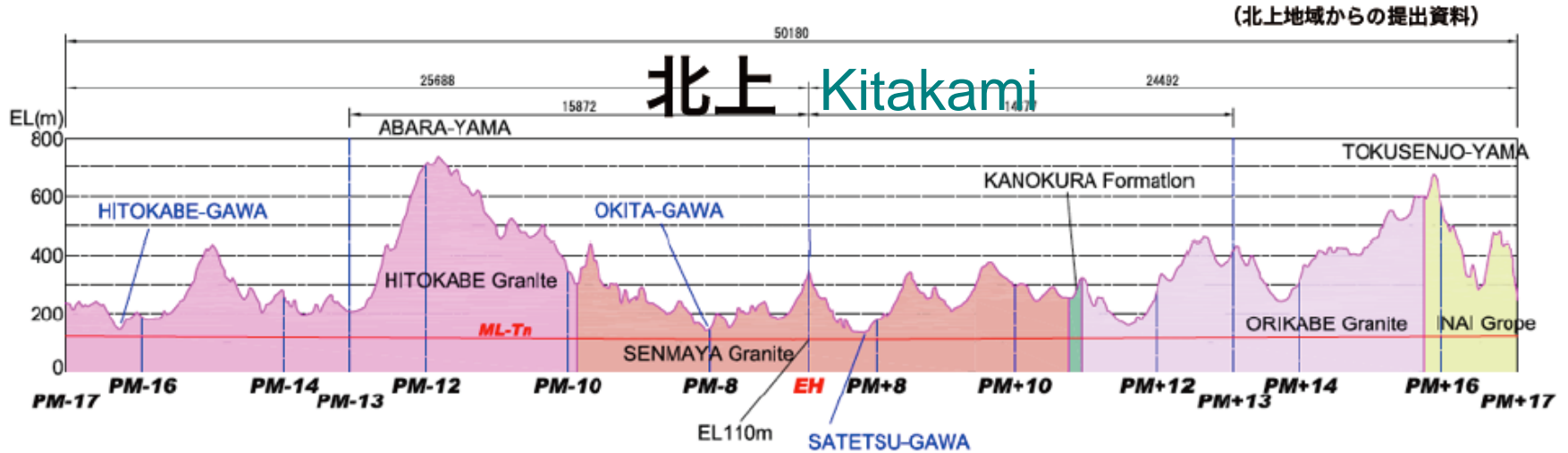


Sefuri Route



ILCルート断面

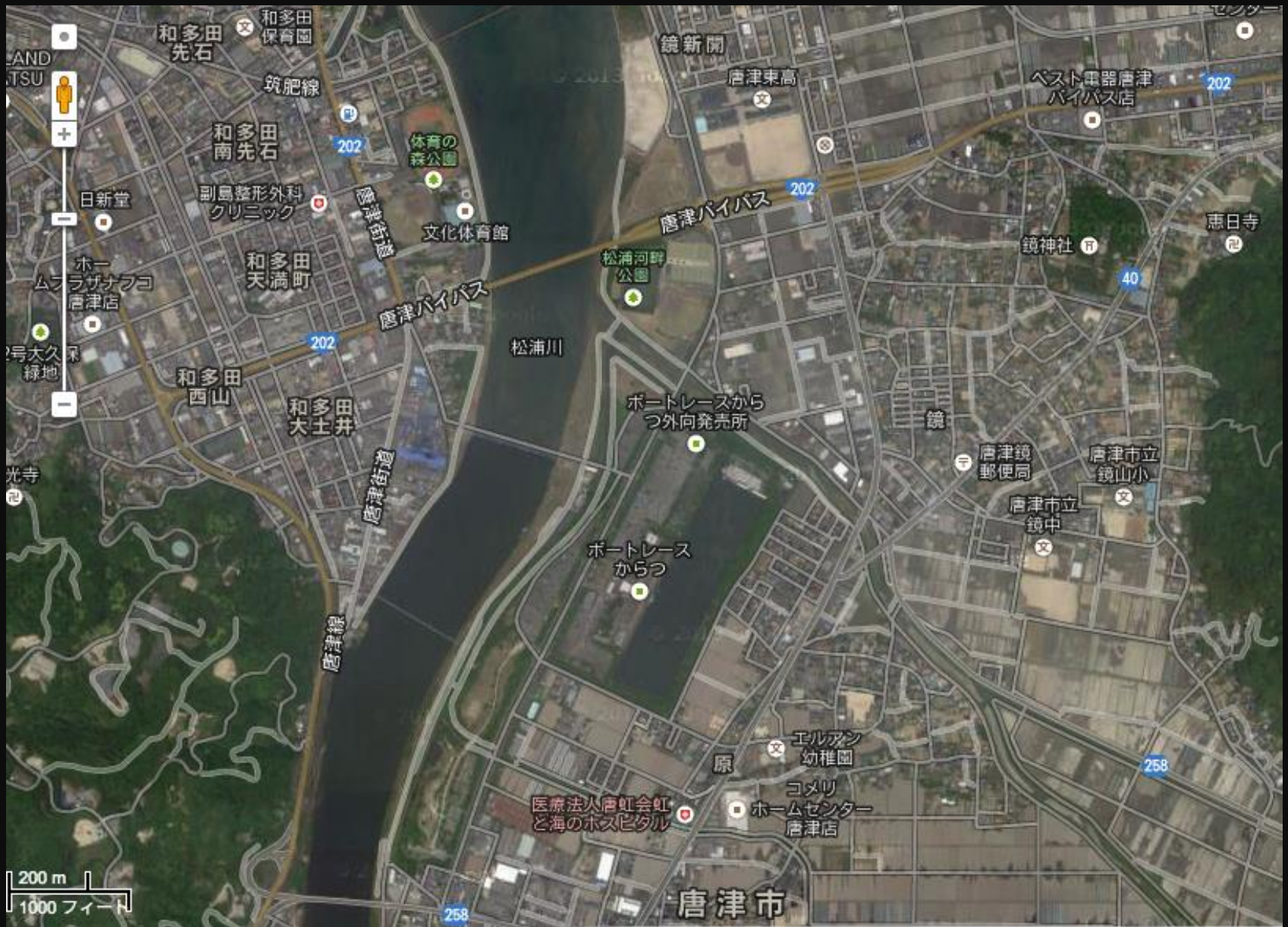
ILC route vertical cross section



Kitakami: Satetsu River



Sefuri : Matsuura River



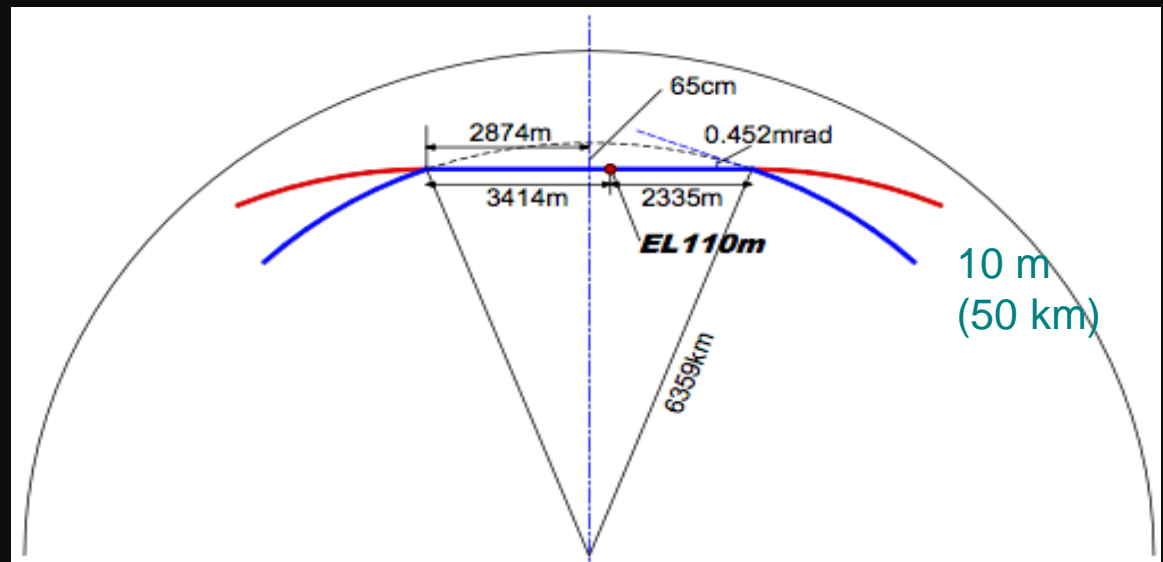
Kitakami : Satetsu River

Sefuri : Matsuura River



Kitakami : Natural Drainage (From the experimental hall)

- Collect the underground water at the exp. hall.
- From there, drain the water to a river
- No need for electrical pumps : safety when blackout



Science Council of Japan

Science Council of Japan

Report submitted : Sep 30, 2013

- ...we fully acknowledge the necessity and academic value of an electron-positron collider that is complementary to the LHC.
- We also acknowledge that the ILC is the project whose study is the most advanced at present as a next-generation electron-positron collider, and that the technical design report published in June 2013 is based on detailed studies conducted by an international design team.

Science Council of Japan

- ...the Science Council of Japan proposes that the Japanese government appropriate necessary fund to study various issues toward judging the advisability of implementing the ILC project, and intensively conduct examinations and studies for 2 to 3 years by a group consisting of experts outside of the relevant field and related government offices.
- In parallel with the above study and examination, negotiations should be conducted with research laboratories and funding bodies of primary countries and regions to clarify the issues such as the international cost sharing.

Science Council of Japan

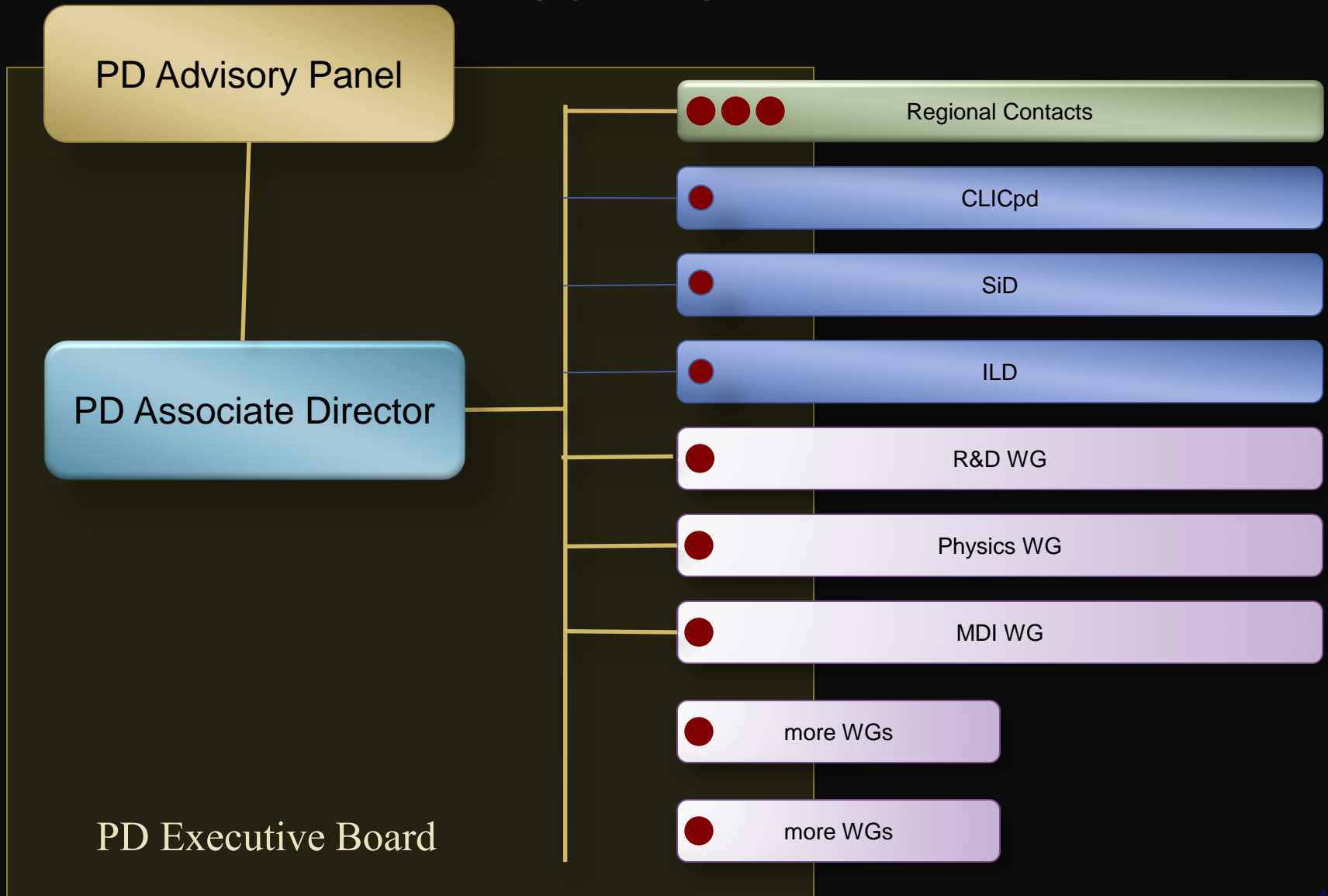
Important issues to be examined (by the expert committee) include:

- (1) A clearer strategy of the particle physics studies at the ILC with the upgrade plans at the LHC in mind.
- (2) A budget framework that does not stagnate the efforts on various national problems and progresses in other academic fields.
- (3) International cost sharing.
- (4) Form of domestic structure centered around the researchers at KEK and universities.
- (5) Personnel and human resources needed during the construction and operation periods, in particular, the leadership material.

LCC PD Status



LCC PD Structure



LCC Physics and Detectors

EB members status

- SiD representative : Marcel Stanitzki
- ILD representative : Ties Behnke (Interim)
- CLICdp representative : Mark Thomson (Interim)

- European regional contact : Juan Fuster (interim)
- North American contact : Dmitri Denisov
- Asian contact : filled in by HY

Ready to start forming WGs

(Physics, MDI, Detector R&D...)

PD Advisory Panel

- Advises the associate director in executing his/her mandate
 - Should be independent of the executive board
 - The PDAP chair is nominated by the PDAD, and reports to the PDAD
 - Its membership is chosen by the PDAP chair in consultation with the PDAD
- A reviewing body for the progress of concept groups toward real collaborations

Linear Collider Collaboration (LCC) Schedule in Oct

Start the sight-specific design

- Oct 15, ILC symposium Tokyo University
(Chair: Akira Ikegami)
- Oct 17, Site visit (All LCC management + local)
- Oct 18, LCC management meeting, Tokyo