

Discussion/ Planning Session

- ILD organisation: status and plans
- Concrete plans
- Report from the R&D group: Jan Strube
- Report from the parameter group: Keisuke Fuji
- Common test beams in ILD: Imad Laktineh

Note: Points on the following slides are meant as triggers for discussion,
Not proposals or solutions.

ILD Organisation

Step 1: Define ILD membership

Call for groups to sign “Statement of participation” in ILD

No financial etc commitment,
but “formal” expression of the intent to participate in ILD.

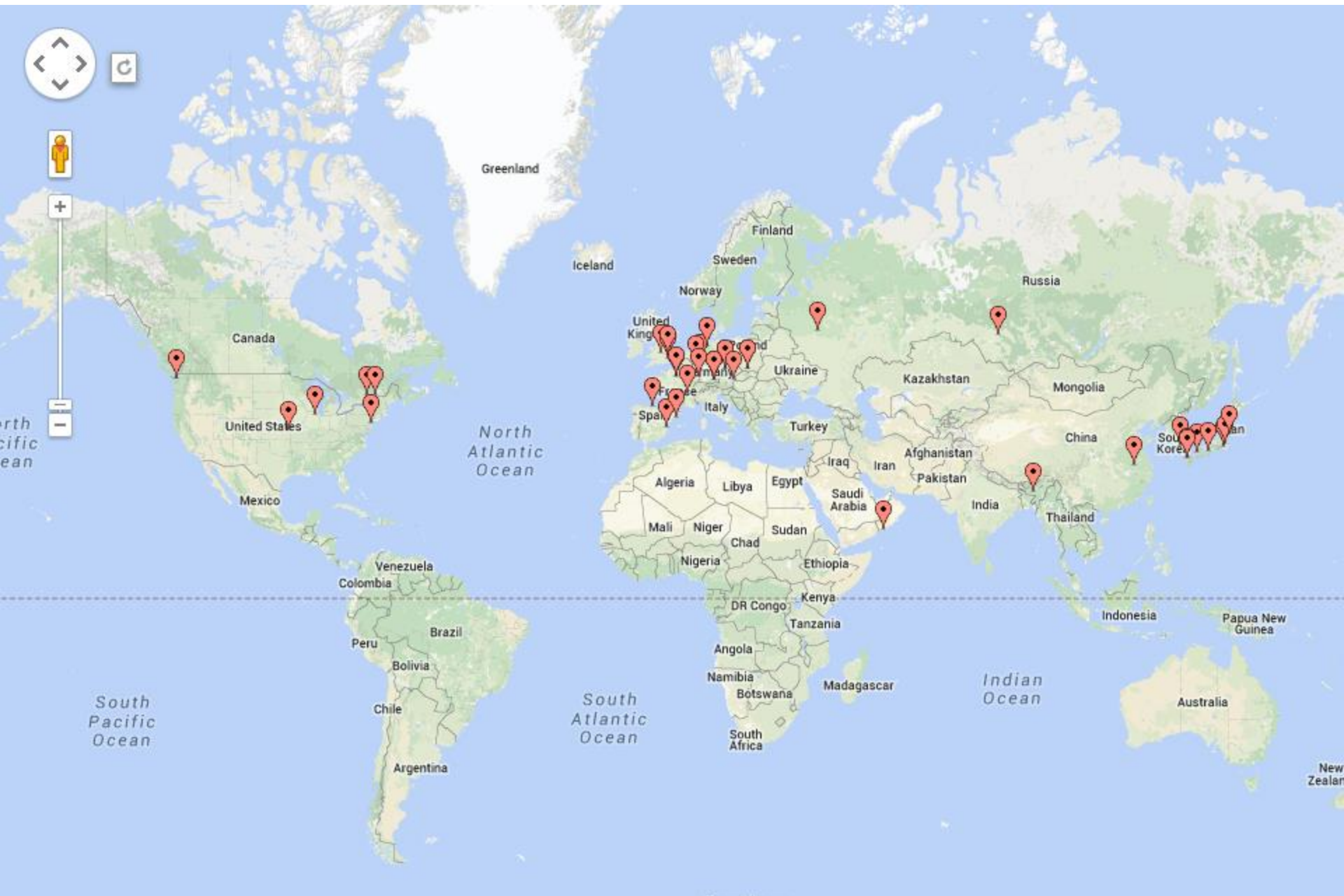
So far 54 Institutes have signed up: great success in my view

Step 2: ILD institute assembly elects a chair

Defines the next step of the ILD structure
Setup a procedure to move towards election of ILD leadership

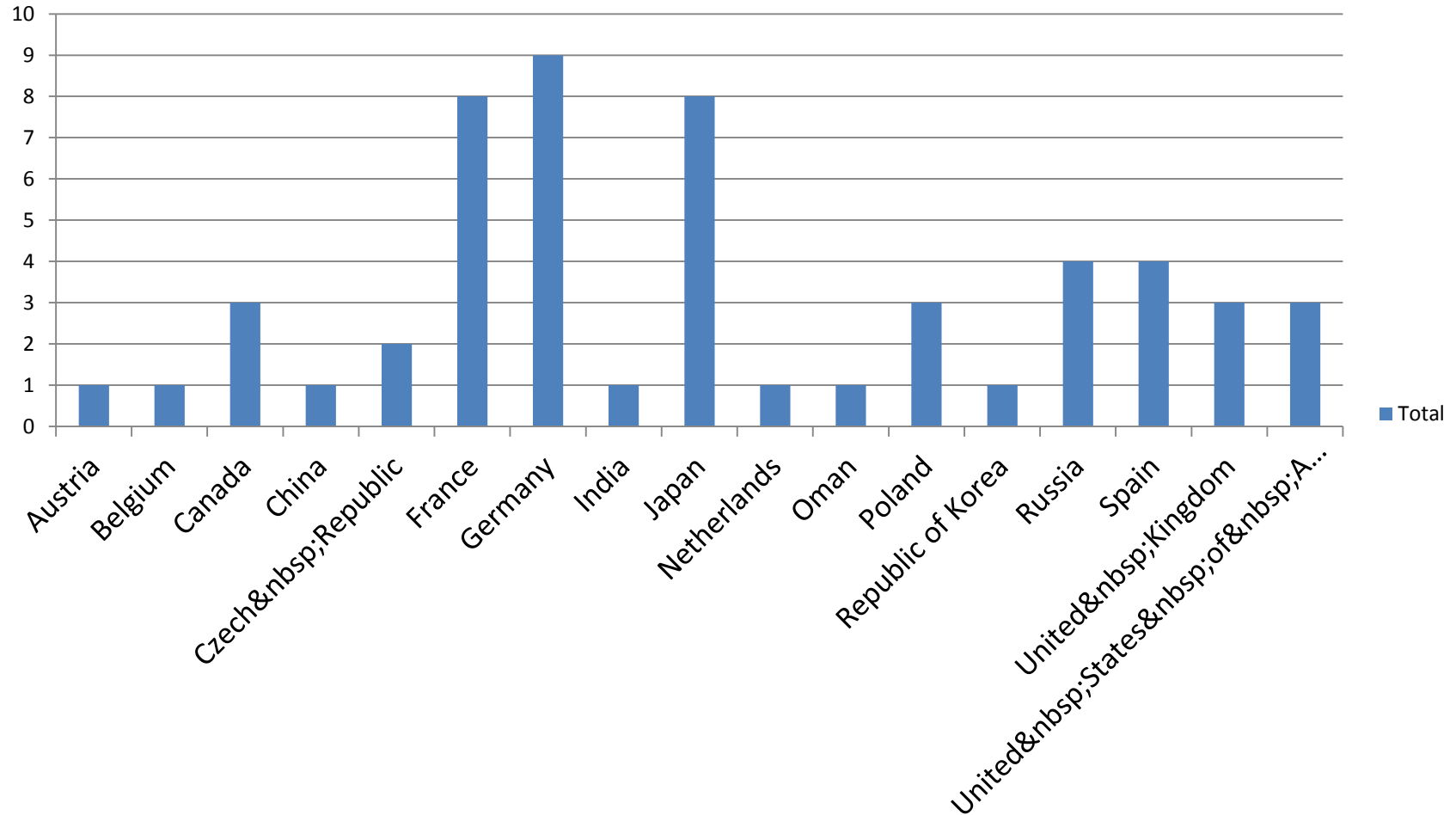
Tomorrow evening: First session of the ILD institute assembly.

One vote per institute, no proxy votes
You are welcome to participate as an observer, but we ask for one delegate per institute to be there.



IA: Country Distribution

Total



ILD Organisation

Step 1: Define ILD membership

Call for groups to sign “Statement of participation” in ILD

No financial etc commitment,
but “formal” expression of the intent to participate in ILD.

So far 54 Institutes have signed up: great success in my view

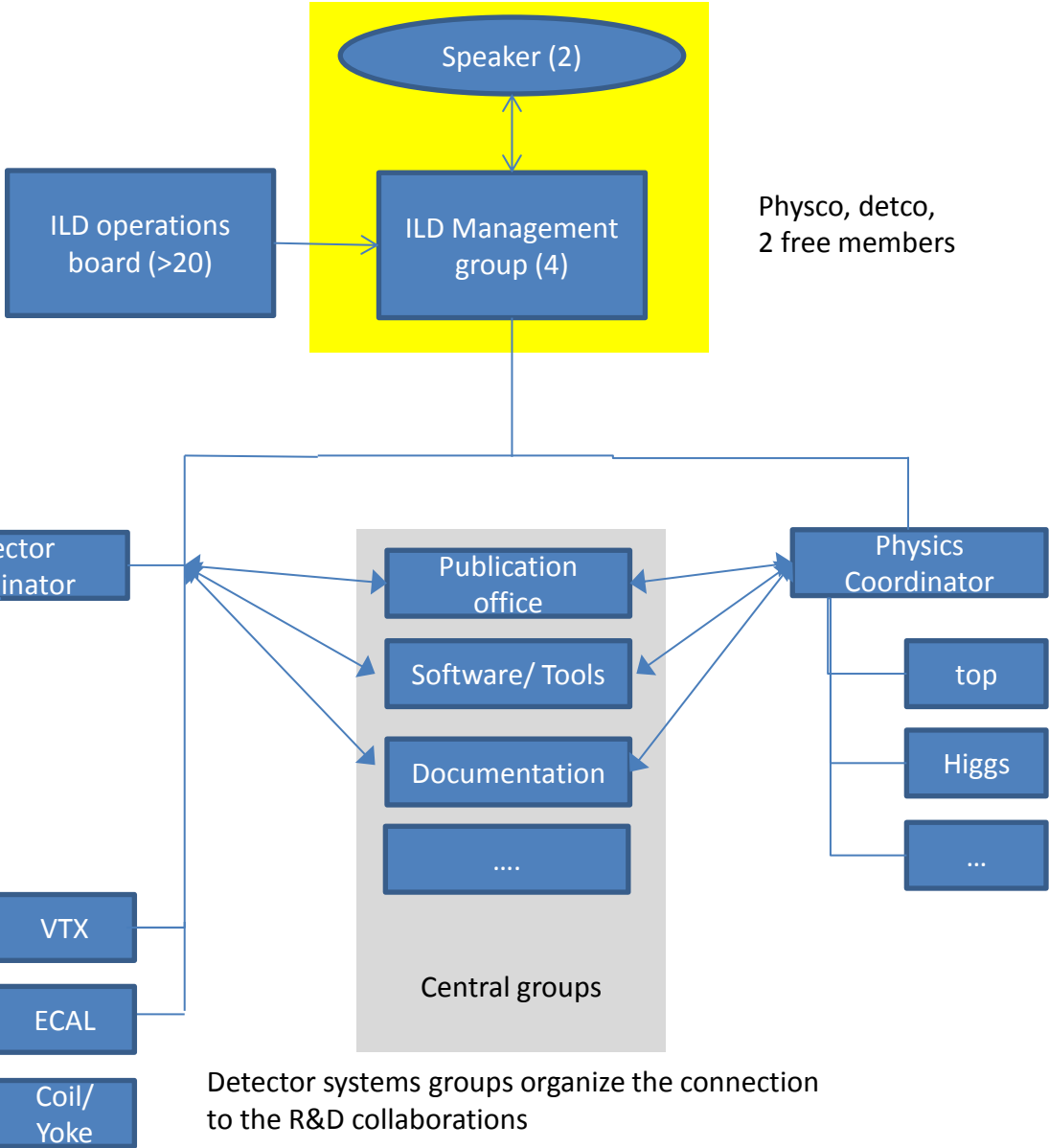
Step 2: ILD institute assembly elects a chair

Defines the next step of the ILD structure
Setup a procedure to move towards election of ILD leadership

Tomorrow evening: First session of the ILD institute assembly.

One vote per institute, no proxy votes
You are welcome to participate as an observer, but we ask for one delegate per institute to be there.

Institute Assembly



Goals/ Issues

- Make the physics case
- Make sure it fits with the running scenarios and machine boundaries

In my view we should try to converge on one model for the physics studies, much as we did for the DBD.

- Make the detector case
- Define a (small) number of different models / technologies to study the range of performance issues.

Very central: make sure you agree among people on methods and limits of these methods.

Software

More on that tomorrow in the software session

Current status:

- Very small core group maintains and develops the complete chain
- LCIO is the basis of our system
- Mokka is reaching the end of its life:
 - LLR was main supporter
 - Continuing support becomes more and more difficult
 - Currently we are at a point that we can just barely guarantee the performance but cannot do further developments
 - Need to move to a new system: DD4HEP is the most obvious choice
 - Goal: do this together with CLIC (driving it) and SiD (reluctant)
- Reconstruction:
 - Continuous struggle, but we are just about keeping ahead of things

ILD and R&D collaborations

ILD does not do its own R&D, but is fully integrated into the R&D collaborations.

- Has been the status between LOI and DBD
- Has mostly worked, but (see talk by Marcel)
 - Sometimes it is not clear who is talking: ILD or R&D
 - ILD “needs” are – sometimes – only of secondary importance (“the money is with the R&D groups)

We need to re-organise the relationship between ILD and R&D

- Stronger focus on ILD is needed
- Clearer communication between ILD and R&D is needed
- ILD needs to build up its own “sub-detector” groups

Push Pull

Issue:

One versus two detectors:

- Push pull is seen by many as a technical problem (outside the ILC)
- We have not managed to communicate the needs for two detectors sufficiently clearly
- However we should be extremely careful to push the move from two to one detectors prematurely

Issues:

- L^* (same L^* for both detectors?)
- Integration studies and engineering
- Complications arising because of two detectors?